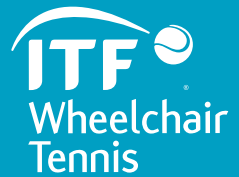


# Wheelchair Tennis Rules and Regulations 2011





## NEC's Investments in the Future

Today, our world faces a number of critical issues related to the environment, education, and so on. We would like to be a part of the solutions to these global challenges, and try to alleviate them – even if only a little at a time.

Thus, we aspire to help create a better and more prosperous society to pass on to future generations who will be playing a key role in the 21<sup>st</sup> century.

# INTERNATIONAL TENNIS FEDERATION

## REGULATIONS FOR WHEELCHAIR TENNIS 2011

CONTENTS		PAGE
I.	MISSION STATEMENT FOR WHEELCHAIR TENNIS	1
II.	HISTORY	2
III.	PUBLICATIONS	3
IV.	RULES OF WHEELCHAIR TENNIS	
1.	Rules of play	4
2.	The Competitive Wheelchair Tennis Player	5
3.	Power Wheelchairs	7
V.	CATEGORIES OF EVENTS	
4.	Wheelchair Tennis Tour	8
5.	Wheelchair Tennis Masters	8
6.	Other Events	8
VI.	REGULATIONS WHEELCHAIR TENNIS TOUR EVENTS	
7.	Enforcement of the regulations	9
8.	Amendment of the regulations	9
VII.	APPLICATIONS	
9.	Applications	9
10.	Late Applications	10
11.	Cancellation	10
12.	Approval of applications and Classification	10
13.	Applications and Sanction Fees	10
VIII.	ORGANISATIONAL REQUIREMENTS	
14.	Organisation	11
15.	Tournament Personnel	13
16.	Venue	15
17.	Transport	17
18.	Accommodation	17
19.	Officiating	18
20.	Promotion	20
21.	Prize Money	21
22.	Player Obligations	22
IX.	SUBMISSION OF RESULTS	
23.	Procedures	23

X.	CONDUCT OF EVENTS	
24.	Eligibility	24
25.	Junior Eligibility	24
26.	Rules to be Observed	24
27.	Waiver of Claims	24
28.	Publicity and Promotion	25
29.	Junior Player Images	25
30.	Television, Recording and Radio Rights	25
31.	International Sponsorship	26
32.	Research	26
33.	Entries	26
34.	Registration	30
35.	Sign-in	30
36.	Conditions of Play	31
37.	Format of Play	35
38.	Draw Sizes	37
39.	Seeds	45
40.	Wild Cards (singles and doubles)	45
41.	Feed Up Cards (singles only)	46
42.	Making the Draw	46
43.	Changes after the Draw	48
44.	Prize Money	49
45.	ITF Wheelchair Tennis Ranking System	53
XI.	WHEELCHAIR TENNIS MASTERS (SINGLES AND DOUBLES)	
46.	Competition	61
47.	Conduct of the Competition	62
48.	Conditions of Play	64
49.	Penalties	64
50.	Arbitration	65
51.	Enforcement of the Regulations	65
XII.	WORLD TEAM CUP RULES	
52.	Competition	66
53.	Entries	67
54.	Prize Money	68
55.	Teams	68
56.	Draws and Seeding	72
57.	Bonus points	74
58.	Conduct of the Competition	74
59.	Conditions of Play	77
60.	Penalties	77
61.	Arbitration	79
62.	Enforcement of the Regulations	80
XIII.	CODE OF CONDUCT FOR WHEELCHAIR TENNIS	
63.	Purpose	81

64.	Exclusive Applicability	81
65.	United States Dollars	81
66.	Player Entry Offences	81
67.	Player On-Site Offences	83
68.	Uniform Tennis Anti-Corruption Program	94
69.	Player Major Offences	109
70.	Medical Control – Anti-Doping Policy	111
71.	Welfare Policy	112
72.	Tournament Offences	112
73.	Interpretations	114
74.	Notice	115
75.	Amendments	115
APPENDIX A		
I	ITF Wheelchair Tennis Medical Commission – Terms of Reference	116
II	General Eligibility	116
III	Quad Draw	117
IV	Physical Disability/ Change of Circumstances	123
V	General	123
VI	Matters Not Provided For And/Or Unforeseen Circumstances	124
APPENDIX B		
	Glossary of Terms	125
APPENDIX C		
	Medical Conditions Rule	127
APPENDIX D		
	Tour Classification	132
APPENDIX E		
	Welfare Policy	134
APPENDIX F		
	Gender verification – Transsexuals	138
APPENDIX G		
	Management	139
APPENDIX H		
	ITF Wheelchair Tennis Department	140
APPENDIX I		
	IWTA	140
APPENDIX J		
	Structure of the ITF and IWTA	141

References to the Rules of the Federation shall mean the Memorandum and Articles of the Association together with the Bye-Laws of ITF Limited (collectively known as the Constitution of ITF Limited).

References to the International Tennis Federation or ITF shall hereafter mean ITF Limited.

References in these Rules and Regulations to Men also include Women.

Please note that where amendments are made in these regulations, the text is underlined.

"The Board of Directors may resolve any dispute, controversy or other questions of interpretation in accordance with Appendix C of the Constitution of the ITF Limited"

# **I. MISSION STATEMENT FOR WHEELCHAIR TENNIS**

The ITF is the international governing body for tennis, including wheelchair tennis. It aims to provide, promote and develop opportunities for men, women and children with physical disabilities to participate in recreational and competitive wheelchair tennis at all levels from novice to the professional player.

As the governing body of tennis, the ITF provides a leading role in the administration of wheelchair tennis. The ITF aims to ensure that a fair and equal opportunity is provided for all those entitled to play under its eligibility rules and that the Rules of Wheelchair Tennis are implemented according to the standards expected of an international body.

The ITF aims to work together with National Tennis Federations, National Disabled Sports Organisations and National Wheelchair Tennis Organisations to provide opportunities for all involved in wheelchair tennis and to encourage integration with able-bodied tennis whenever possible.

The ITF will, through a range of events and initiatives, ensure that wheelchair tennis is seen as a “world class” sport and as such recognises its World Champions alongside their peers.

The ITF aims to work together with the Paralympic movement to ensure that wheelchair tennis is a part of Paralympic Games every four years.

The ITF aims to provide an international Tour, which will result in a year-end Masters event in singles and doubles as a showcase event for the sport.

The ITF aims to provide an annual team competition, the World Team Cup, for Nations to compete at the highest level and to determine the team champions within wheelchair tennis.

## II. HISTORY

Over the past three decades, wheelchair tennis has been one of the fastest growing and most exciting international sports for the disabled. Originated in 1976 by American Brad Parks, the game has developed from a recreational activity to a professional sport. In response to its remarkable global growth, the International Wheelchair Tennis Federation (IWTF) was created in 1988 to govern, promote and develop the sport worldwide. The original eight founding member nations have been joined by over fifty other countries and it is estimated that wheelchair tennis is played in more than a hundred countries in all continents.

On 1st January 1998, the IWTF was fully integrated into the ITF, making it the first disabled sport to achieve such a union at an international level. In order to maintain links with former IWTF member nations, which include National Disability Organisations, National Wheelchair Tennis Associations and National Tennis Associations, the International Wheelchair Tennis Association (IWTA) was formed. The IWTA acts as an advisory body to the ITF Wheelchair Tennis Committee, representing the views of players and administrators.

### **III. PUBLICATIONS**

At the beginning of the year the ITF will publish a new Wheelchair Tennis Rules and Regulations and Wheelchair Tennis Tournament Guide. The Wheelchair Tennis Rules and Regulations includes information regarding the Rules, Competition and Events and the running of wheelchair tennis. The Tournament Guide contains the entire Grand Slams, Super Series and ITF/Futures Series calendar, tournament information, breakdown of ranking points and an international entry form. Throughout the year the ITF will produce electronic newsletters, which include the latest wheelchair tennis news. In addition the ITF will include articles on wheelchair tennis in the weekly publication “This Week” and in “ITF World” which is published 3 times a year. All news and information on wheelchair tennis can also be found on the ITF website: [www.itftennis.com/wheelchair](http://www.itftennis.com/wheelchair).

# IV. RULES OF WHEELCHAIR TENNIS

## 1. RULES OF PLAY

The game of wheelchair tennis follows the ITF Rules of Tennis with the following exceptions.

### a. The Two Bounce Rule

The wheelchair tennis player is allowed two bounces of the ball. The player must return the ball before it bounces a third time. The second bounce can be either in or out of the court boundaries.

### b. The Wheelchair

The wheelchair is considered part of the body and all applicable rules, which apply to a player's body, shall apply to the wheelchair.

### c. The Service

The service shall be delivered in the following manner:

- i. Immediately before commencing the service, the server shall be in a stationary position. The server shall then be allowed one push before striking the ball.
- ii. The server shall throughout the delivery of the service not touch with any wheel, any area other than that behind the baseline within the imaginary extension of the centre mark and sideline.
- iii. If conventional methods for the service are physically impossible for a quad player, then the player or another individual may drop the ball for such a player and allow it to bounce before it is struck. If this is the case, the same method of serving must be used for the entire match.

### d. Player Loses Point

A player loses a point if:

- i. The player fails to return the ball before it has bounced three times; or
- ii. Subject to rule e) below the player uses any part of his feet or lower extremities against the ground or against any wheel while delivering service, striking a ball, turning or stopping while the ball is in play; or
- iii. The player fails to keep one buttock in contact with his wheelchair seat when contacting the ball.

e. Propelling the Chair with the Foot

- i. If due to lack of capacity a player is unable to propel the wheelchair via the wheel then he may propel the wheelchair using one foot.
- ii. Even if in accordance with rule e) i. above a player is permitted to propel the chair using one foot, no part of the player's foot may be in contact with the ground:
  - a) during the forward motion of the swing, including when the racket strikes the ball;
  - b) from the initiation of the service motion until the racket strikes the ball.
- iii. A player in breach of this rule shall lose the point.

f. Wheelchair/Able-bodied Tennis

Where a wheelchair tennis player is playing with or against an able-bodied person in singles or doubles, the Rules of Wheelchair Tennis shall apply for the wheelchair player while the Rules of Tennis for able-bodied tennis shall apply for the able-bodied player. In this instance, the wheelchair player is allowed two bounces while the able-bodied player is allowed only one bounce.

*Note: The definition of lower extremities is: the lower limbs, including the buttocks, hips, thighs, legs, ankles and feet.*

## 2. THE COMPETITIVE WHEELCHAIR TENNIS PLAYER

- a) In order to be eligible to compete in ITF sanctioned wheelchair tennis tournaments and the Paralympic Games, a player must have a medically diagnosed permanent mobility related physical disability. This permanent physical disability must result in a substantial loss of function in one or both lower extremities. Players must meet one of the following minimum eligibility criteria:
  - i. A neurological deficit at the S1 level or proximal, associated with loss of motor function, or;
  - ii. Ankylosis and/or severe arthrosis and/or joint replacement of the hip, knee or upper ankle joints, or;
  - iii. Amputation of any lower extremity joint proximal to the metatarsophalangeal joint, or;
  - iv. A player with functional disabilities in one or both lower extremities equivalent to i, ii or iii above.
- b) A quad player must meet the criteria for permanent physical disability as defined above. In addition, the player must have a permanent physical disability that results in a substantial loss of function in one or both upper

extremities. Quad players must meet one of the following minimum eligibility criteria:

- i. A neurological deficit at the C8 level or proximal, with associated loss of motor function, or;
  - ii. Upper extremity amputation, or;
  - iii. Upper extremity phocomelia, or;
  - iv. Upper extremity myopathy or muscular dystrophy, or;
  - v. A player with functional disabilities in one or both upper extremities equivalent to i, ii, iii or iv above.
- c) In addition, a quad player must have at least one of the four following functional disabilities with regards to upper extremity use, with or without limitation of trunk function:
- i. Reduced motor function necessary to perform an overhead service
  - ii. Reduced motor function necessary to perform a forehand and backhand
  - iii. Reduced motor function necessary to manoeuvre a manual wheelchair
  - iv. Inability to grip the racquet necessitating the need for taping and / or an assistive device in order to play

The combination of dominant and non-dominant upper limb function and trunk function will be considered when assessing eligibility for quad status. In order to be deemed eligible for quad status, players who can demonstrate a good level of trunk function and control will need to have a greater level of disability in their upper limbs than those with little or no trunk control.

- d) In addition, a quad player must also:
- i. Have a minimum of three affected extremities with a permanent physical disability as defined above; and
  - ii. Satisfy the classification points scoring system, the current version of which appears in the ITF Quad Tennis Classification Manual; and
  - iii. Comply with any specific requirements of the particular classification status assigned; and
  - iv. Co-operate fully, honestly and in good faith with any classification process and/or related procedure.

Quad players may not use either foot to propel a wheelchair.

Any questions or protest as to player's eligibility to participate under this Rule will be decided under the procedures listed in Appendix A.

For guidance purposes only a glossary of terms will appear in Appendix B.

### **3. POWER WHEELCHAIRS**

Players who have severe limitations on mobility that prevent them from pushing a manual chair and therefore use a power wheelchair for every day mobility may use a power wheelchair to play tennis; however, once players have elected to play tennis in a power wheelchair, they must continue to do so in all ITF sanctioned events. Protests against any player playing in power wheelchairs should be directed to the ITF Wheelchair Tennis Committee in accordance with Appendix A.

## V. CATEGORIES OF EVENTS

### 4. WHEELCHAIR TENNIS TOUR

Tournaments that comply with the criteria laid down in the ranking regulations (Section 45) are eligible for inclusion of their results on the ITF Wheelchair Tennis Ranking (singles and doubles). Such events fall into the following groups:

Grand Slams, Super Series, ITF 1, 2 and 3 Series and ITF Futures Series  
Main Draw and Second Draw (singles and doubles)  
Consolation (Main Draw singles only)

### 5. WHEELCHAIR TENNIS MASTERS

The Wheelchair Tennis Masters, in singles and doubles, are the year-end events of the Wheelchair Tennis Tour. The top 8 men and women and the top 4 quads on the rankings will be invited to participate in the Singles Masters. For the Doubles Masters the top 8 men's, top 4 women's and top 4 quad doubles teams will be accepted based on the combined doubles ranking of the players.

### 6. OTHER EVENTS

#### a) **World Team Cup**

The World Team Cup is the official wheelchair tennis Team Event of the ITF. The World Team Cup is played in a different country, once a year, for men, women, quads and juniors. In order to participate a country must be a member of the ITF and the IWTA.

#### b) **Paralympic Games**

After being an exhibition sport at the 1988 Paralympic Games, wheelchair tennis is a full medal sport from 1992 onwards. The regulations are decided by the International Paralympic Committee (IPC) and the Organising Committee in conjunction with the ITF. In order to participate a country must be a member of the ITF and the IWTA.

## VI. REGULATIONS WHEELCHAIR TENNIS TOUR EVENTS

### 7. ENFORCEMENT OF THE REGULATIONS

The following Regulations (chapters VII-XIII) with respect to Wheelchair Tennis Tour Events shall be binding. It is the responsibility of the ITF and the Referee on site to enforce these Regulations.

### 8. AMENDMENT OF THE REGULATIONS

No amendment to the following Regulations (chapters VII-XIII) shall be effective unless adopted by the ITF in accordance with the Rules laid down by the ITF.

## VII. APPLICATIONS

### 9. APPLICATIONS

In order for Grand Slams, Super Series and ITF 1/2/3/Futures Series events to be approved by the ITF and to be eligible for computer credit, notification of application must be received by the ITF office **before the deadline set by the ITF Office**. Tournament application forms are available on request from the ITF Office. All applications must be sanctioned by the National Tennis Association concerned. Any independent organisers should obtain a counter-signature from the National Tennis Association on the application form and send a copy of this form to the Association concerned when the application is made.

All tournaments that wish to be considered for inclusion on the Wheelchair Tennis Tour must also sign the Tournament Agreement. Any tournament that breaks the Tournament Agreement may be penalised at the discretion of the ITF Wheelchair Tennis Committee. Penalties may include a fine and/or possible suspension from the Wheelchair Tennis Tour.

Copies of the Wheelchair Tennis Tour calendar are available on request and on the website: [www.itftennis.com/wheelchair](http://www.itftennis.com/wheelchair). If a tournament fails to meet the Grand Slam, Super Series and ITF 1/2/3/Futures Series requirements set by the ITF, its status shall be reconsidered by the ITF.

## **10. LATE APPLICATIONS**

Once the tournament calendar has been finalised no further applications will be accepted onto the calendar. Exceptions can only be made by approval of the ITF Wheelchair Tennis Committee. Late applications may be subject to a fine and increased sanction fee at the discretion of the ITF Wheelchair Tennis Committee.

## **11. CANCELLATION**

Once an application has been approved by the ITF any details confirming the tournament dates and site may not be altered. Please note Rule 72f.

Any cancellation will subject the organisers to loss of all application fees and the Event must remain off the calendar for one (1) year before applying for reinstatement, other than in exceptional circumstances as authorised by the ITF Wheelchair Tennis Committee.

## **12. APPROVAL OF APPLICATIONS AND CLASSIFICATION**

All applications will receive advance written notification regarding ITF approval and acceptance of the Event with the appropriate tournament classification. The classifications decided by the ITF Wheelchair Tennis Committee are final and cannot be appealed by a tournament.

## **13. APPLICATIONS AND SANCTION FEES**

Applications for tournaments must be submitted to the ITF on an official Wheelchair Tennis Tour application form. An invoice of the sanction fee will be sent by email prior to the tournament.

<b>Event</b>	<b>Sanction Fee</b>
Grand Slams	\$500
Super Series	\$500
ITF 1 Series	\$350
ITF 2 Series	\$300
ITF 3 Series	\$250
ITF Futures Series	\$150

## VIII. ORGANISATIONAL REQUIREMENTS

The ITF will classify tournaments based on the following criteria. The classification will be based on the evaluation reports completed by the ITF Representatives attending the tournaments and player feedback.

### 14. ORGANISATION

**a) Meals**

Breakfast and a minimum of one (1) other free meal per day should be included in the entry fee although tournaments are strongly encouraged to include three (3) free meals per day whenever possible. Tournaments that do not provide free food for players must be able to offer low cost food on site. All food (whether provided or available for purchase) should be varied, nutritious and be suitable for athletes and a vegetarian alternative should be available. Fruit should be available at all times.

**b) Drinks**

Enough free water (preferably bottled) shall be available on court during matches at all times. Tournaments are strongly encouraged to offer free water (and if possible soft drinks/sports drinks) for all players off court at all times, particularly in hot climates. Drinks must be available to purchase on site at all times.

**c) First Aid/Doctor/Dentist/Massage**

A doctor (preferably with knowledge of spinal cord injuries, or related disabilities) should be on call for the duration of the event and there should be at least one (1) person qualified in first aid (including CPR) on site at all times. All events are strongly encouraged to offer massage at no cost (or minimum cost) to players throughout the duration of the tournament. At Super Series events, it is recommended that a doctor be present on-site.

**d) Tournament Desk on Site**

There shall be a tournament desk on site that shall be staffed at all times by someone with a good knowledge of English. There shall be an information board detailing the latest ITF Wheelchair Tennis Ranking, the ITF Wheelchair Tennis Code of Conduct, the Prize Money breakdown, the Athletes' Commission list, the ITF Anti-Doping Programme, the ITF Representative on site and any important phone numbers during the tournament (e.g. Doctor, emergency services, hotel, transportation, Tournament Director and Referee).

- e) **Schedule**  
Every evening, the schedule for the following day's play shall be published and displayed in the stadium and hotels or otherwise be made available for competitors and coaches.
- f) **Accreditation**  
Tournaments must provide accreditation to all players, staff, media and all other personnel. Accreditation must be displayed at all times whilst on the tournament site.
- g) **Tournament Visitor Accreditation**  
Any Player Support Team Member, as defined by the ITF Welfare Policy (Appendix E) or Tournament Visitor, as defined below, attending an ITF NEC Wheelchair Tennis Tour or World Team Cup event must report to the Tournament Committee upon arrival and request accreditation for the full duration of his/her stay. For the purposes of the accreditation the full name of the attendee and the organization he/she represents must be provided. Tournament Visitor Accreditation does not entitle the visitor to access private player areas, such as the locker rooms or player lounge. Where possible, tournament visitors should be provided with photo identification guest passes that are clearly distinguishable (e.g. by colour) from player identification passes.
- Note: Tournament Visitors includes, but is not limited to, the following groups: Any prospective or current agent, suppliers, sports manufacturers, the media, recruitment organizations, or training, development and academic institutions of any description. For the avoidance of doubt, it does not include anyone visiting an event solely as a tennis spectator.
- h) **Insurance**  
All tournaments must have their own Public Liability Insurance policy, which includes the ITF. The ITF recommends insurance be as high as possible.
- i) **Co-operation with ITF**  
In addition to the above, tournaments must be willing to comply with the requirements of the ITF regarding submission of acceptance lists, results, reports and associated information, adhering to deadlines and Wheelchair Tennis Tour sponsorship requirements.
- j) **Entry Deadline**  
Tournaments must strictly adhere to their entry deadline, as this will determine which players are accepted into the tournament. Players who

wish to enter the Main Draw after the entry deadline may only be accepted through a Wild Card.

**k) Number of days/players/courts**

Tournaments requesting ITF sanction must be of a minimum of three (3) days duration. Based on the number of match courts, playing hours and number of days' play, a maximum number of players should be set.

<b>Draw Size</b>	<b>No. of days</b>
8	3
16	4
32	5

**15. TOURNAMENT PERSONNEL**

A Tournament Director and a Referee (both of whom should speak English) shall be appointed by the Tournament Committee to run the tournament. In addition, an ITF Tournament Representative may attend the tournament. Their responsibilities include the following:

**a) Tournament Director Duties**

- Liaison with the Tournament Committee and Referee.
- Liaison with the ITF and entry authority as necessary.
- Receipt and confirmation of player entries.
- Forwarding of the tournament acceptance list to the ITF at the entry deadline and of the direct acceptance list one week prior to the start event.
- Point of contact for all advance information and arrangements.
- On-site organisation.
- Production of all material including fact sheet, entry forms etc.
- Forwarding of full results to ITF on completion of the Event.
- Payment of prize money.
- Hotel and transportation arrangements.
- Promotional and publicity requirements.

**b) Referee Duties**

- Liaison with the Tournament Committee and Tournament Director.
- Selection of players accepted into the draws.
- Making the draw.
- Registration of all players.

- Conducting of matches.
- Scheduling of matches.
- Disciplinary measures.
- Final authority in the settlement of any disputed on-court decisions or points of law in connection with the Rules of Tennis.
- Confirming the Tournament Director has complied with Regulations regarding facilities and equipment.
- Appointment and replacement, if necessary, of umpires, linesmen and ball boys/girls.
- Deciding whether a court is fit for play, or if the use of artificial lighting is needed.
- Deciding whether a match should be moved to another court for any reason.
- Deciding when play should be halted in view of weather conditions, bad court conditions or bad light.
- Keeping full results of all completed matches and verifying the accuracy the final sheets forwarded to the ITF immediately on completion of the Event.
- To forward to the ITF upon completion of the Event the Referee's report of the tournament.

**c) ITF Tournament Representative Duties**

- Know, understand and be conversant with the ITF Rules of Tennis and the Rules of Wheelchair Tennis and the Regulations for the Wheelchair Tennis Tour. In conjunction with the Referee ensure that they are observed.
- Be present at the draw.
- Be available to converse with the Referee as and when required. The Referee is the final authority in the settlement of any disputes, on court decisions or points of law in connection with the Rules of Tennis.
- Inspect all facilities and all playing areas on a daily basis. All facilities must be functional and accessible by the start of the tournament.
- Liaise with the Tournament Director and Referee throughout the Event ensuring that everything runs efficiently.
- Organise central information point to distribute information on the Wheelchair Tennis Tour and the ITF Wheelchair Tennis Department
- Ensure that all Tournament administrative procedures/forms are completed and that all paperwork is sent to the ITF on completion of the Event.

Be available to converse with players regarding any aspect of wheelchair tennis including the Wheelchair Tennis Tour, Athletes Commission and the ITF Wheelchair Tennis Department.

**d) Tournament/Officials**

The Tournament Committee shall appoint an officiating team following the minimum requirements of the tournament classification. The ITF encourages tournaments to appoint certified personnel.

**e) Ball Boys/Girls**

It is recommended to have ball boys/girls during matches. Ball boys and girls should be trained by the referee before they are permitted on court.

At Grand Slams ball boys/girls are required for all matches.

At Super Series ball boys/girls are required for finals and recommended for semi-finals.

**16. VENUE**

**a) Facilities on Site**

Adequate accessible changing rooms and shower facilities shall be available on site. If there are insufficient permanent accessible toilets for use during matches, clean, hygienic accessible portable toilets may be made available but only in conjunction with hand washing facilities. All toilets must be cleaned and checked regularly. It is recommended that there are locker rooms reserved only for players.

**b) Sun Protection**

There must be adequate provision of shade, particularly in hot climates; it is recommended that umbrellas be provided on court. In very hot climates it is advised that matches are scheduled in the morning and late afternoon/evening.

Tournaments must provide shade and ice buckets on court for Quad players. A quad player can be assisted to spray water over their face.

**c) Wheelchair Storage**

There must be a secure place for players to store their tennis wheelchairs overnight (at player's own responsibility).

**d) Stringer**

ITF 1 events and above should provide a stringer on-site. For lower grade tournaments, they should either offer stringing facilities on-site or have

information available where racquets can be strung. It is the players' responsibility to ensure that they have enough rackets to play with if there is no stringer on site.

**e) Repair Station**

It is required to have a repair station on site and an air compressor available at all times. Players should travel with a hand pump, basic tool kit and spare parts.

**f) Scoreboards**

Scoreboards should be provided on all show courts. At Grand Slams, Super Series and Singles Masters and Doubles Masters the scoreboards should display the players' names.

**g) Catering**

There must be facilities accessible to players to purchase food (e.g. café or restaurant).

**h) Player Lounge**

There must be a player lounge available on-site.

**i) ITF Tournament Representatives Office/Desk**

If an ITF Tournament Representative is attending the tournament an office/desk should be arranged with Internet access.

**j) Practice Courts**

A minimum of one (1) practice court per sixty (60) players shall be available free of charge to players from at least one (1) day before the start of the event until the completion of the event. Practice courts must be of the same surface as the match courts. It is preferable that the practice courts are on site. If the practice courts are at a different venue to the match courts, free transportation must be provided throughout the day.

**k) Court Preparation and Court Lay-Out**

All courts must be well prepared prior to the match (clay-courts must be prepared, water on court, bins emptied etc). It is also important to ensure that the courts have a professional look when deciding where to display the banners. Banners should be displayed at court level, un-creased and fully stretched.

## 17. TRANSPORT

- a) Tournaments are recommended to provide complimentary transport to and from the airport for flights arriving and departing between 9am - 11pm one day before play and one day after play. Players must arrange their own transport outside the hours stated. Players must send travel details to the tournament director at least two weeks prior to the tournament commencing otherwise the tournament director cannot guarantee transport.
- b) Transportation must be accessible to the players (accessible buses or cars).
- c) Tournaments are encouraged to offer transportation to the airport at other times if possible.
- d) Free transportation shall be offered from the official accommodation to the tournament site on a regular basis during match days and from the day before matches start.
- e) The first transportation of the day must arrive at the tournament site a minimum of fifteen (15) minutes before the first practice session, or 30 minutes before the first match, whichever is the earliest.
- f) Transportation must be available from the tournament site to the hotel on completion of the last match of the day.

## 18. ACCOMMODATION

- a) **Costs**

Accessible accommodation at reasonable cost (based on location and season) shall be offered at a nearby hotel. Tournaments are strongly encouraged to include the hotel fee with the entry fee. If possible, tournaments should offer a choice of two (2) hotels to cater for players on different budgets although this should only be done if all other requirements (including transportation) are still met.
- b) **Size of Doors/Number of lifts**

It is recommended to state the size of the bathroom doors in the Tournament Fact Sheet. Only hotels with enough lifts in relation to the number of players at the event should be used. There should only be a maximum of two (2) players per bathroom.
- c) **Door widths/Bathrooms**

It is recommended that for access, door widths should be 90 cm or more. Furthermore, we recommend that bathroom doors are not removed to create space.

**d) Tournament Desk in Hotel**

There must also be a tournament information point in the official hotel detailing the transportation schedule (including details of how to obtain transportation), order of play and results. A member of the organizing committee must be present in the hotel on the day of arrivals and departures.

**19. OFFICIATING**

**a) Grand Slam and Super Series events**

The Referee shall be of a minimum level of ITF White Badge (except with written approval of the ITF). There shall be roving umpires from the first round of all draws. National chair umpires shall be provided as follows:

- Main Draw – all matches (men, women and quads, singles and doubles)
- Second Draw - quarter-finals (men, women and quads, singles and doubles)
- There shall be at least 2 lines persons for the finals of the singles and doubles in the Main Draw for men, women and quads i.e. one for the far side line and one for the service line.

**b) ITF 1 Series events**

The Referee shall be of a minimum level of ITF White Badge (except with written approval of the ITF). There shall be roving umpires from the first round of all draws. National chair umpires shall be provided as follows:

- Main Draw – round of 16 (men, women and quads, singles and doubles)
- Second Draw - semi-finals (men, women and quads, singles and doubles)
- There shall be at least 2 lines persons for the finals of the singles and doubles in the Main Draw for men, women and quads i.e. one for the far side line and one for the service line.

**c) ITF 2 and ITF 3 Series events**

The Referee shall be of a minimum level of ITF White Badge (except with written approval of the ITF). There shall be roving umpires from the first round of all draws. Chair umpires shall be provided as follows:

- Main Draw - quarter-final (men, women and quads, singles and doubles)
- Second Draw- semi-final (men singles and doubles)

**d) Futures Series events**

A local Referee may be appointed but he must be experienced with ITF Wheelchair Tennis Regulations. There shall be roving umpires from the first round of all draws. Chair umpires shall be provided as follows:

- Main Draw - semi-final (men, women and quads, singles and doubles)

**e) Non-Umpired Matches**

The ITF recognises that at some tournaments it is not possible to have a Chair Umpire at every match. The following guidelines have been created to ensure that non-umpired matches are conducted in a similar manner worldwide:

**i. Line Call Disputes (for matches not played on clay courts)**

If the Referee (or assistant) is called to the court over a disputed line call and he was not watching the match, he should ask the player who made the call (on his own side of the net) if he is sure of the call. If the player confirms the call, the point stands with this call. If the Referee (or assistant) is off-court and happens to be watching a match when the player makes a blatantly incorrect call, he can go on-court and inform the player that the incorrect call was an unintentional hindrance to this opponent and the point will be replayed.

**ii. Ball Mark Disputes (clay courts only)**

If the Referee (or assistant) is called to the court to resolve a dispute, he should find out if the players agree in which ball mark it is. If the players agree on which mark it is, but disagree on the reading of the ball, the Referee (or assistant) should decide if the mark shows the ball was in or out. If the players disagree on which mark it is, the Referee (or assistant) should find out from the players what kind of shot was played and the direction in which the ball was hit. This may assist in deciding which mark is the correct one. If this information does not help, the call by the players at the end where the mark is stands.

**iii. Score Disputes**

If the Referee (or assistant) is called to court to resolve a score dispute, he should discuss the relevant points or games with the players to find out the points or games that the players agree on. All points or games, which the players agree on stand and only those in dispute should be replayed.

## 20. PROMOTION

### a) **Tournament Entry Form**

Tournaments are obliged to accept the standard ITF Wheelchair Tennis Entry Form. A tournament shall include in its entry form the following clauses:

- i. I hereby agree to abide by the ITF Rules of Tennis, the ITF Rules of Wheelchair Tennis and pay the entry fee as required by the tournament. I further agree to abide by the Code of Conduct enforced by the tournament.
- ii. I hereby agree for participation in the Main Draw to abide by the ITF Wheelchair Tennis Code of Conduct and agree to comply with and be bound by all the provisions of the ITF Tennis Anti-Doping Programme set out in Bye-Law 4 of the Constitution of the International Tennis Federation.
- iii. I understand and agree that I have a medically diagnosed permanent physical disability as defined in the Rules of Wheelchair tennis, found at [www.itftennis.com/wheelchair/rules/eligibilityrules.asp](http://www.itftennis.com/wheelchair/rules/eligibilityrules.asp) and that I am eligible to compete in ITF sanctioned wheelchair tennis tournaments. I understand that if requested by the ITF, I am required to supply appropriate medical documentation that substantiates the disability.

### b) **Tournament Fact Sheet**

A Tournament Fact Sheet should be sent to the ITF and available to the players and National Associations at least six (6) weeks before the start of the event. This must include the following information:

- Name, address, telephone, fax and email of the Tournament Director
- Name, telephone, fax and email of the Referee, for sign-in
- Tournament Site (address, telephone and fax numbers, website address)
- Tournament dates (including when play starts and schedule for finals)
- Prize Money total (and the breakdown)
- The event classification (and draw size)
- Time and place of the Draw
- Court Surface (and number of courts)
- Make of ball (which should be ITF approved) including if high altitude
- Official hotel (including rate, contact details inc. website address and width of bathroom doors)

- Transportation details (including which airport players should fly to)
- Reference to the fact that the ITF Wheelchair Tennis Code of Conduct will be in force at the Tournament
- The address to which entries should be sent
- Any other relevant details (such as officiating details, social functions, clinics)

*Note: Further detailed organisational requirements are sent to all tournaments.*

## **21. PRIZE MONEY**

The following minimum prize money levels are required for 2011:

Grand Slams	US\$ 60,000
Super Series	US\$ 35,000
ITF 1 Series	US\$ 23,000
ITF 2 Series	US\$ 15,000
ITF 3 Series	US\$ 10,000
ITF Futures	US\$ 2,000

### **Obligations to Tournaments with Prize Money:**

- a) Information about the prize money breakdown should appear on the tournament fact sheet. The ITF will only publish the amount of prize money being given to the Main Draw.
- b) Information about the breakdown and distribution of the prize money should be available to the players in the following manner:
  - in the players' information pack
  - before the start of the tournament
  - displayed at the tournament office
  - in the tournament programme
- c) Each tournament should fill in a prize money report after the tournament is completed, showing the actual amounts of prize money, the distribution and the names of the players with the amounts they received.
- d) No reduction in the total prize money is permitted after it is announced. The prize money distribution can be changed if it is incorrect. Tournaments should deduct the appropriate taxes before publication of the total prize money. Alternatively, tournaments should state the applicable national tax regulations in their entry forms and on the Tournament Factsheet.

- e) In the cases where the minimum number of players or teams is not met and no ranking points are awarded, no prize money will be awarded.
- f) Prize money should be paid immediately at the conclusion of the tournament.
- g) Tournaments are required to provide supporting paperwork indicating the amount of prize money that the player has been allocated.
- h) A player who is deemed a "No Show" in the first round will receive no prize money.

## **22. PLAYER OBLIGATIONS**

Please see the Code of Conduct for Wheelchair Tennis - Chapter XIII.

## IX. SUBMISSION OF RESULTS

### 23. PROCEDURES

- a) All Wheelchair Tennis Tour Event organisers must forward by fax or email to Victoria Thorpe and the Wheelchair Tennis Department on the Sunday immediately following the completion of the Event:-
- i. The final draw sheets for all draws (including consolation) for men, women, quads and juniors, singles and doubles.
  - ii. The Code of Conduct report.
  - iii. The Point Penalty Scorecard(s).
- b) In addition, organisers must forward to Victoria Thorpe and the Wheelchair Tennis Department the completed tournament report, to be sent no later than three (3) weeks following the completion of the tournament. This report must include the following information:-
- i. The Medical Form.
  - ii. A Tournament Report (if no ITF Representative on site).
  - iii. The Prize Money report.
  - iv. The Media Coverage Report
  - v. The tournament programme, press cuttings and other relevant tournament materials.
- c) Results should be submitted to:
- ITF Wheelchair Tennis Department  
Bank Lane  
Rochampton  
London SW15 5XZ  
Great Britain  
Telephone: (44) 20 8878 6464  
Fax: (44) 20 8392 4741  
Email: [Victoria.Thorpe@itftennis.com](mailto:Victoria.Thorpe@itftennis.com), [wheelchair@itftennis.com](mailto:wheelchair@itftennis.com)

## **X. CONDUCT OF EVENTS**

### **24. ELIGIBILITY**

#### **Wheelchair Tennis Eligibility**

In order to be eligible to play wheelchair tennis, players must meet certain criteria, as set out in Rule IV, 2.

#### **Medical and Fitness Control**

All players entering ITF Draws at ITF sanctioned wheelchair tennis events, including the Wheelchair Tennis Tour, the World Team Cup and the Paralympic Games agree, as a condition of entry, to the Tennis Anti-Doping Programme and Fitness Control.

Wheelchair Tennis is a physically demanding sport and it is the player's responsibility to ensure that he/she is physically and medically fit to participate in any ITF sanctioned wheelchair tennis event, including the Wheelchair Tennis Tour, the World Team Cup and the Paralympic Games.

In cases where there is any doubt, the Referee may request a medical certificate confirming that the player is medically and physically fit to compete.

### **25. JUNIOR ELIGIBILITY**

Only boys and girls born on or after 1st January 1993 are eligible to compete in ITF Wheelchair Tennis Junior Events in 2011.

### **26. RULES TO BE OBSERVED**

All ITF sanctioned wheelchair tennis events, including the Wheelchair Tennis Tour, the World Team Cup and the Paralympic Games, must be conducted in accordance with the Rules of Tennis, the Rules of Wheelchair Tennis and the ITF Wheelchair Tennis Rules and Regulations. It is the responsibility of each participant and official to be fully conversant with all these Rules and Regulations.

### **27. WAIVER OF CLAIMS**

In submitting an entry to an ITF Wheelchair Tennis Tour Event, all players agree, as a condition of entry, that for themselves, their executors, administrators, heirs and personal representatives, all claims of any kind, nature and description are waived, including past, present or future claims and injuries, if any, sustained in traveling to or from, or participating in an ITF Wheelchair

Tennis Tour Event, against the ITF, the National Tennis Association or the Regional Tennis Association sanctioning such events.

Players are strongly advised to take out adequate insurance to cover accident and injury travelling to/from, and playing at, any ITF Wheelchair Tennis Tour Event. If players are accompanied by other persons, then those persons should also take out proper insurance, including travel, to cover for any eventuality whilst accompanying the player to the event.

## **28. PUBLICITY AND PROMOTION**

Each player grants and assigns to the ITF the right in perpetuity to make, use and show from time to time and at its discretion, motion pictures, still pictures and live, taped or filmed television and other reproduction of him/her during the event and in connection with the promotion of the event without compensation for him/her, his heirs, devisees, executors, administrators or assigns. Such promotional activities by ITF shall not be identified as or represented to be an endorsement by the player of any product or company.

## **29. JUNIOR PLAYER IMAGES**

Notwithstanding rule 28, it is prohibited for any Tournament Visitor to obtain, transmit, store or distribute any images of junior players, unless they are the parent or legal guardian of the player, without the express written authorisation (which includes permission about how the image(s) will be used) of the parent, legal guardian of the player or ITF Referee. Any authorised images must be exclusively of tennis matches, practice or tournament activity including the presentation of trophies.

## **30. TELEVISION, RECORDING AND RADIO RIGHTS**

ITF is the exclusive owner of all "audio" and "audio-visual" media rights to the Event including but without limitation to all forms of television, internet, mobile, radio and other electronic media.

ITF hereby agrees to assign to the Tournament the exclusive right to appoint and enter into any contracts with Host Broadcasters to produce and broadcast coverage of the Event taking place during the term of the Agreement by means of Traditional Broadcast Television and Traditional over the air radio within the Host Territory, provided that the Tournament will procure a full assignment of copyright and other IP rights in any coverage to ITF (including but not limited to "archive rights").

Any revenues generated by the Tournament from such contracts will be for the sole benefit of the Tournament.

The Tournament will make best efforts to negotiate with the Host Television Broadcaster to provide the ITF, free of charge, with recordings of all matches at the Event in such format as requested by ITF. In the event a charge is incurred, subject to acceptance of the same by the ITF, this will be paid by the ITF.

### **Archive Rights**

Upon expiration of the Agreement ITF shall remain the exclusive owner of all audio and audio-visual media rights (“archive rights”).

### **31. INTERNATIONAL SPONSORSHIP**

The ITF retains the right to secure international sponsors (Title & Ancillary) for the Tour. An international sponsor will have the right to exposure at all events of the Tour. The ITF grants all events the right to secure local sponsors.

The ITF retains the exclusive right for net branding at each event of the Tour. The Tournament is not allowed to place branding on the net unless agreed otherwise in writing with the ITF.

### **32. RESEARCH**

No research involving players, coaches or other persons directly associated with a tournament shall be conducted without prior approval of the ITF.

### **33. ENTRIES**

Each tournament must provide entry forms, copies of which must be sent to the ITF office for reference at least six (6) weeks in advance of their entry deadline. All entries must be made in writing, either on the official entry form, by letter, fax or email. Tournaments are obliged to accept the ITF Wheelchair Tennis Tour entry form. Any player whose entry has been refused may appeal to the ITF Wheelchair Tennis Committee who will investigate the case and make the final decision.

#### **a) IPIN: International Player Identification Number**

All players entering ITF NEC Wheelchair Tennis Tour tournaments agree, as a condition of their entry to have an active International Player Identification Number (IPIN). Failure by a player to have registered and paid for a valid IPIN Membership will result in the rejection of that

player's entry. The International Player Identification Number (IPIN) service is available from [www.itftennis.com/ipin](http://www.itftennis.com/ipin).

**b) Singles**

For regulations with regards to the Main Draw and Second Draw, please check Sections 33 to 43 inclusive. All other draws can be made under the responsibility of the Tournaments.

**c) Doubles**

For regulations with regards to the Main Draw and Second Draw, please check Section 38 "Draw Sizes" and Section 40 "Wild Cards".

A player who competes in the Main Draw for singles either by Direct Acceptance or by a Wild Card should not automatically gain Direct Acceptance or a Wild Card for the doubles Main Draw unless their doubles ranking (or that of their partner) warrants it.

**d) Mandatory Events**

The Grand Slams and Singles Masters are mandatory events for those players who qualify at entry deadline. If a player who receives direct entry chooses not to enter, he/she will receive "0" points and the event will be included in the best of "x" events (best of 9 for the men, best of 7 for the women and best of 6 for the quads).

**e) Grand Slam Alternate Rule**

A player is permitted to enter a Grand Slam event and another tournament during that same week on the NEC Wheelchair Tennis Tour. If the player does not gain direct entry into the Grand Slam event at the entry deadline the player can then compete in the entered NEC Tour event. The player will be placed in ranking order on a list of alternates. In the event of a withdrawal after the entry deadline at the Grand Slam the player will be replaced by offering the place to the highest ranked player on the alternate list and thereafter to players on the alternate list in ranking order. These players can withdraw from the other event without penalty. If the player does gain entry into the Grand Slam event he should withdraw from the NEC Tour event more than two weeks before the start of the tournament.

**f) Restrictions for Top Players**

The following rule applies at the entry deadline of a tournament.

Restrictions at ITF 3 and Futures Events

MEN:

- Players ranked **in the top 20** at entry deadline cannot enter any Futures events.

- Players ranked **in top 10** at entry deadline can play only two (2) ITF 3 events per roll-over year.

WOMEN:

- Players ranked **in the top 10** at entry deadline cannot play any Futures events.
- Players ranked **in the top 5** at entry deadline can play only two (2) ITF 3 events per roll-over year.

QUADS:

- Players ranked in the top 4 at entry deadline cannot play any Futures events.

Wild Cards

If ranking of any of the players mentioned above changes to outside of the restricted ranking at any time after the entry deadline, a player can be awarded a Wild Card.

**g) Men/Women/Quads**

Men, women and quad players are only permitted to enter one singles, one doubles event and one consolation event per tournament. Additional entry to mixed doubles, a senior and junior event is up to the discretion of the tournament. Where a Quad draw is offered a quad player is only permitted to play in Quad singles and Quad doubles.

**h) Entry forms**

All players must sign an official entry form. All entries sent by letter, fax or email are subject to the regulations and conditions of entry and must contain the information required on the official entry form for entry processing, including the player's full name, date of birth, IPIN, ranking, contact address, telephone numbers and signature to abide and comply with the ITF Rules, Anti-Doping Programme and Minimum Eligibility Clause.

**i) Entry Deadline**

Tournaments will be required to use the entry deadlines as set by the ITF Office. Entry deadlines are advertised in the Wheelchair Tennis Tournament Guide and on the Website and will be strictly enforced. Only in special circumstances are tournaments allowed to use an alternative deadline.

The following entry deadlines will be used:

· 6 weeks – GS Note: 6 weeks before the start of the 2 week Grand Slam tournament.

- 6 weeks – SS/ITF 1
- 4 weeks – ITF 2/ITF 3/Futures

The entry deadline will be used to determine who gets accepted into the Tournament. Acceptance into the Main and Second Draw will be determined using the ranking of the week before the tournament commences. Feed Up Cards must be allocated at the entry deadline but Wild Cards can be allocated at a later stage. **Players will not be accepted after the entry deadline with the exception of Wild Cards.**

Players may include their intention to play doubles on the entry form. However, no doubles pair should be included in the draw unless both players have signed in accordance to Section 35 "Sign-in".

**j) Withdrawals**

All players may withdraw from a Wheelchair Tennis Tour event fourteen (14) days before the start of the tournament (see Section 66, “Player Entry Offences”) without incurring any penalty. All withdrawals must be made in writing, by letter, fax or email.

**k) Insurance**

All players must have adequate travel and medical insurance.

**l) Medical Excuse**

A player may withdraw through injury or illness providing an independent medical certificate is submitted to the appropriate entry authority and/or ITF stating that the player concerned is unable to play in the tournament due to a specified injury or illness. All medical certificates must be received by the appropriate entry authority and/or the ITF within twenty-one (21) days of the player's withdrawal from the tournament concerned. If a player sustains an injury which necessitates the withdrawal from subsequent Events, no automatic penalty will be levied. Following recovery, should a player participate in an Event and have to withdraw through injury, a new medical certificate will be required, even if the injury is a recurrence.

**m) Entry Fees**

Tournament committees may charge an entry fee for both singles and doubles. Any such entry fee must be paid as directed by the Tournament Committee.

## 34. REGISTRATION

### a) **IPIN: International Player Identification Number**

All players entering ITF NEC Wheelchair Tennis Tour tournaments, the World Team Cup event, and the tennis event at the Paralympic Games agree, as a condition of their entry to have an active International Player Identification Number (IPIN). Failure by a player to have registered and paid for a valid IPIN Membership will result in the rejection of that player's entry. The International Player Identification Number (IPIN) service is available from [www.itftennis.com/ipin](http://www.itftennis.com/ipin).

### b) **Quad players**

All players wishing to compete in the Quad Draw have to complete a medical registration form (available from: <http://www.itftennis.com/wheelchair/rules/quadclassification/index.asp>), which must be completed and returned to the ITF at least three months before entering a Quad Draw on the Wheelchair Tennis Tour. A tournament will only accept ITF registered quad players to compete in their Main or Second Quad Draw. For further information see Appendix A.

## 35. SIGN-IN

### a) **Singles**

All players accepted into the Main/Second Draw must sign-in personally or by phone with the Referee by 4:00 pm (16:00 hours) on the day before the start of play.

A player, who signs in by phone and does not appear for a tournament, will be fined according to the Code of Conduct.

Players who do not sign in will be left out of the draw. It is the players' responsibility to make sure they have the correct telephone details.

### b) **Doubles**

Both players of a doubles pair must sign in for doubles with the Referee by 2 pm (14:00 hours) on the day singles matches start, regardless of whether they have declared their wish to play doubles on their entry forms. Any player who has not signed in in-person as required by this rule, should not be included in the draw.

### c) **Consolation**

All first round losers of the Main Draw who wish to compete in the consolation draw must sign in. Players are not obligated to play consolation. The Wheelchair Tennis Code of Conduct will be enforced in all consolation matches. Also refer to rule 38 f).

**d) Contact Details**

All players must ensure that a contact telephone number is left with the Referee at which they may be reached during the tournament.

**36. CONDITIONS OF PLAY**

**a) Warm-up**

The warm-up shall not exceed five (5) minutes.

**b) Continuous Play**

Play shall be continuous under the terms of Rule 29 of the 2011 Rules of Tennis. No rest is allowed after the second set in a three (3) set match, except when the extreme weather conditions ruling is in effect, as set out in 36 o) below.

**c) Coaching**

Players shall not receive coaching during a match. Communications of any kind, audible or visible, between a player and a coach shall be construed as coaching. Players shall also prohibit their coaches:

- i.** From using audible obscenity within the precincts of the tournament site.
- ii.** From making obscene gestures of any kind within the precincts of the tournament site.
- iii.** From verbally abusing any official, opponent, spectator or other person within the precincts of the tournament site.
- iv.** From physically abusing any official, opponent, spectator or other person within the precincts of the tournament site
- v.** From giving, making, issuing, authorising or endorsing any public statement within the precincts of the tournament site having, or designed to have, an effect prejudicial or detrimental to the best interests of the tournament and/or of the officiating thereof.

**d) Toilet Breaks**

Two (2) toilet breaks are permitted during a singles or doubles match, to be taken preferably at the set break. Each break may be for a reasonable time. The player must receive permission from the Chair Umpire, if there is one, or from his opponent, who cannot reasonably refuse the request.

Additional breaks may only be permitted by the Chair Umpire, Roving Umpire or Referee. If a player takes a third toilet break without permission, they may be charged with “leaving the court without permission” under the Code of Conduct.

e) **Walkover in the final**

A player (or doubles team) receiving a walkover in the final must be prepared to play a best of three (3) set exhibition match if required by the Referee.

f) **Preparation of Equipment**

Each player is ultimately responsible for ensuring their wheelchair and all other equipment is ready on time for their match. The Referee has the right to default any player who is not ready to go onto court for whatever reason, within fifteen (15) minutes of their match being called.

g) **Quad Rackets**

Quad players are allowed to use the extra long rackets in case extra space is needed to tape the racket to the hand/arm.

h) **Time Limit Repairs, Broken Equipment, Strapping of Racket (quad players)**

The Chair Umpire, Roving Umpire or Referee has the authority to determine suspension of play. Wheelchair repairs may not exceed twenty (20) minutes in total during one (1) match. This is regardless of any number of breakdowns. Delay beyond a total of fifteen (15) minutes will result in a point penalty, and delay beyond twenty (20) minutes will result in a default.

Any quad player may be allotted extra time during a changeover in order to reposition or adjust the racket in the hand, without being penalised, but only if prior agreement has been made with their opponent as well as the Umpire (if there is one) prior to the match. The quad player must make every effort to keep any extra time to a reasonable minimum, so as not to disrupt or interfere with the normal progression of the match.

i) **Balls**

A minimum of four (4) new balls are to be provided for the first and third sets of the Main Draw matches.

j) **Practice Balls**

A minimum of three (3) used balls per day for practice of the same manufacturer as the tournament ball, must be available free of charge to each player from the day prior to the commencement of play. At Super Series and Masters Events, a minimum of six (6) balls should be made available per player per day.

- k) Rest**  
Rest time between matches shall be as follows:-

<b>Duration of Match</b>	<b>Rest Time</b>
0 - 1 hour	Half an hour
1 - 1.5 hours	1 hour
1.5 hours or more	A minimum of one hour and a half

- l) Medical Conditions**  
For the full Medical Conditions Rule see Appendix C.

- m) Court Protection**  
Prevention of damage to the courts is at the discretion of the Referee. The following items could create damage to the courts and should be inspected.

- i.** Footrests
- ii.** Front Casters
- iii.** Rear Anti-tip Tubes
- iv.** Rear Tyres

Players are also required to have non-marking tyres that do not damage the court surface. A reasonable amount of time will be given to correct the violation(s). This will be determined by the Referee. Failure to do so will be grounds for default.

- n) Light up Casters**  
Light up casters are prohibited to be used by a player whilst competing on court.

- o) Extreme Weather Conditions**  
Extreme weather conditions shall be defined at such time that heat, as measured by a Heat Stress Monitor, meets or exceeds a heat stress index of 28 degrees Celsius/82 degrees Fahrenheit. If a Heat Stress Monitor is not available, extreme weather conditions are then defined by the danger zone which is equal to or above the apparent temperature of 90 degrees Fahrenheit, illustrated on the chart below. Heat stress is measured by Wet Bulb Global Temperature (WBGT) which is calculated as  $(0.7 \text{ Wet Bulb} + 0.2 \text{ Global Temperature} + 0.1 \text{ Dry Bulb} = \text{WBGT})$ .

### **Apparent Temperature (what it is like)**

*Air Temperature (°F) °C =5/9 (°F - 32)*

Fahrenheit	70	75	80	85	90	95	100	105	110	115	120
Centigrade											
Humidity											
0%	64	69	73	78	83	87	91	95	99	103	107
10%	65	70	75	80	85	90	95	100	105	111	116
20%	66	72	77	82	87	93	99	105	112	120	130
30%	67	73	78	84	90	96	104	113	123	135	148
40%	68	74	79	86	93	101	110	123	137	151	
50%	69	75	81	88	96	107	120	133	150		
60%	70	76	82	90	100	114	132	149			
70%	70	77	85	93	106	124	144				
80%	71	78	86	97	113	136					
90%	71	79	88	102	122						
100%	72	80	91	108							

The Referee, Tournament Director and/or designee have the authority to determine if the Extreme Weather Condition rule will go into effect during a Tournament. If it is so determined, a fifteen (15) minute break will be allowed (not including the time taken to reach and return from the place of rest on site) between the second and third sets. The Chair Umpire must accompany the player to and from the place of rest on site. There may also be a delay in the starting time of the matches scheduled for play that day.

When possible, this decision to delay the start of matches due to Extreme Weather Conditions should be made prior to the scheduled start of play. In addition, the Referee may suspend play due to weather conditions.

#### **i) Measurement and Monitoring of Weather Conditions**

The Referee, Tournament Director and/or designee will monitor weather conditions by taking measurements a minimum of three (3) times and a maximum of five (5) times during the day. The readings will be determined prior to the start of play and will be posted in the Supervisor's office.

The minimum of three readings will be taken:

- (1) ½ hour before match play begins for the day;
- (2) middle of the scheduled day;
- (3) prior to beginning of the last match of the day or prior to the start of the first night session match.

**ii) Implementation of the Rule**

In the event that during the day there is a change in weather conditions as determined by this periodic monitoring, the Extreme Weather Condition Rule can be put into effect at any time on all courts, excluding matches already in progress. If there is a sudden change in weather conditions and the Rule is lifted, those matches already in progress will continue under the Extreme Weather Condition Rule. In the case of rain or interruption to play, the Referee, Tournament Director and/or designee can reassess the Extreme Weather Condition Rule.

**iii) Conditions of the 15-Minute Break**

If it is a mutual agreement between the players not to take a fifteen (15) minute break, then play will continue. However, if requested by one player, the official fifteen minute break will be taken. During the fifteen minute break, no coaching or treatment will be allowed. However, a player will be allowed to receive an adjustment of medical support, medical equipment and/or advice from the Referee, Tournament Director and/or designee. Following the fifteen (15) minute break, no re-warm-up will be allowed. This rule applies in addition to the two (2) bathroom and/or change of attire breaks allowed during the match. A player may not take a 15-minute break and a medical time out consecutively.

**iv) Penalties:**

After completion of the Extreme Weather Conditions fifteen (15) minute break between the 2nd and 3rd sets, any delay in returning to the court shall subject a player to Time Violations.

**v) Quad Heat Rule**

Tournaments must provide shade and ice buckets on court for quad players. A player can be assisted by their coach to spray water over their face. In very hot climates it is advised that matches are scheduled in the morning and late afternoon/evening.

**37. FORMAT OF PLAY**

- a)** All Men's, Women's and Quad Main, Second Draw as well as juniors matches will be played according to the ITF Rules.
- b)** All singles matches shall be the best of three (3) sets.
- c)** The ITF tie-break system shall be used in all sets. Match tie breaks can be used in doubles with prior approval from the ITF and this must be

announced on the tournament factsheet (which should be available at least 6 weeks before the tournament commences).

- d) Alternative Scoring may be adopted as an alternative to the traditional scoring system, provided the decision is announced in advance of the event and is approved by the ITF in advance. Once tournaments have decided to use this system in a draw, it must be used for all matches in that draw.

The following approved Alternative Scoring methods may be used as an alternative to the traditional scoring system:

- "Short" Sets
- Deciding Match Tie-Break Game (7 points)
- Deciding Match Tie Break Game (10 points)

For an explanation on the use of the Alternative Scoring Systems please see Appendix IV of the 2011 Rules of Tennis.

- e) All players who wish to play consolation must sign in for consolation. The format for consolation matches will be the same as for the draws as described above, including seeding and bye lines as described in Section 39 "Seeds" and Section 42 "Making the draw".
- f) If there are only five (5) singles players or less in the Main/Consolation Draws tournaments are requested to play a Round Robin format. It is at the discretion of the tournament whether a final is played between the top two placed players and this must be announced in advance.

If there are less than five (5) doubles teams' tournaments are recommended to play the Knock-Out format.

- g) If court availability, due to unforeseen delays, becomes a problem, the Referee has the authority to modify the playing format to ensure that the tournament finishes on time. The best-of-three sets with No-Ad scoring or deciding tie-break or deciding match tie-break can be used. It is strongly recommended to play the normal format in the Main Draw. The Main Draw should have priority in case of unforeseen delays.  
Grand Slam Tournaments may be extended as necessary for completion.

**h) Round Robin**

- i. Ties shall be broken as follows:
- (a) If two (2) players/teams are tied with the same won-lost record after the completion of the Round Robin, the tie is broken as follows:

- The winner of the head-to-head of the two (2) players/teams tied.
- (b) If three (3) players/teams are tied with the same won-lost record after completion of the Round Robin, the tie is broken as follows:  
The player/team with the higher percentage of total sets won.
  - (c) Any tie thereafter will be broken as follows:  
The player/team with the higher percentage of total games won.
  - (d) Any tie with two (2) players/teams thereafter will be decided by the results of the match between the two (2) players/teams involved.
  - (e) Any tie with three (3) players/teams thereafter will be decided by the Tournament Committee or by draw.

If ties exist after the above procedures, the Tournament Committee shall make the final determination

- i) The ITF recommends that players should not play more than two matches a day. If three must be played then it is recommended one singles and two doubles matches are played.
- j) The ITF recommends that a player should be scheduled to play a singles match before a doubles match irrespective of whether it is the Main, Second or Consolation Draw.
- k) Sponsor and TV coverage should not compromise the schedule of play e.g. doubles played before singles.

### 38. DRAW SIZES

The ITF has the authority to change the draw sizes where deemed necessary.

- a) **Main Draw: men (women and quad draws at selected events)**  
The following descriptions apply to the men's draws at all events and women's and quad draws at Grand Slams, Super Series and ITF 1 events.
  - i. **Singles**  
The ranking is one complete list and the highest ranked players entering the tournament fill the set draw size, which is determined by the ITF. A set maximum number of Wild Cards and Feed Up Cards are available. Entry into the Main Draw and the seeds are determined by the ITF Wheelchair Tennis Singles Ranking of the previous week.

**ii. Doubles**

The highest ranked teams, drawn on the first day of the tournament fill the set draw size, which is determined by the ITF. A set maximum number of Wild Cards are available. Entry into the Main Draw and the seeds are determined by the combined doubles ranking of the previous week.

Teams are selected according to the following method:

- (1) Teams consisting of two players with an ITF Ranking, in order of the combined ranking of the two players. If two doubles teams have the same combined ranking, the pair with the highest ranked individual player should be accepted first.
- (2) Teams consisting of one player with an ITF Ranking and one unranked player, in order of ranking for the ranked player. Ties shall be resolved by a draw.
- (3) Teams consisting of two players without ITF Ranking. The order of teams shall be drawn.

Acceptance into the singles Main Draw does not give players automatic entry into the doubles Main Draw.

**b) Second Draw: men (women and quad draws at selected events)**

The following descriptions apply to men's draws at all events and women's and quad draws at Super Series and ITF 1 events.

**i. Singles**

Players who have not been accepted in the Main Draw will be included in the Second Draw. The ITF determines the minimum set draw size. The ITF will allow a larger draw size, although points will only be awarded for the draw size as identified by the ITF. Entry into the Second Draw and the seeds are determined based on the ITF Wheelchair Tennis Singles Ranking of the previous week.

**ii. Doubles**

Teams who have not been accepted in the Main Draw will be included in the Second Draw. The ITF determines the minimum set draw size. The ITF will allow a larger draw size, although points will only be awarded for the draw size as identified by the ITF. Entry into the Second Draw and the seeds are determined based on the combined doubles ranking of the previous week. At ITF 3 and Futures events the Main Draw and Second Draw doubles can be combined in order to ensure draws have enough doubles teams to constitute a draw. Ranking points, however, will only be awarded from the set draw size advertised and to draws with a minimum of 5 doubles teams. Acceptance into the singles

Second Draw does not give players automatic entry into the doubles Second Draw.

**c) Main Draw: Women and Quads**

Women and quad players (with the exception of the draws at the events mentioned in points a and b above) will play in one extended Main Draw.

**d) Draw sizes by categories**

The Draw Sizes differ per Categories as stated in the tables that follow.

**i. Men Singles: Main & Second Draws**

MEN SINGLES						
	MAIN DRAW			SECOND DRAW		
	Americas	Europe Africa	Asia Oceania	Americas	Europe Africa	Asia Oceania
<b>GS</b>	8	8	8	-	-	-
<b>SS</b>	32	32	32	16	16	16
<b>ITF 1</b>	32	32	24	16	16	16
<b>ITF 2</b>	16	24	16	<u>16</u>	16	16
<b>ITF 3</b>	<u>16</u>	16	16	<u>16</u>	16	16
<b>Fut.</b>	16	16	16	<u>16</u>	<u>16</u>	<u>16</u>

Note:

1. The draw sizes specified above are set draw sizes. The size of the Main Draw Singles cannot be increased.
2. The size of the Second Draw can be increased. Ranking points will only be awarded from the set draw size advertised and for draws with a minimum of 5 players.
3. When there are less than five singles players in the Second Draw of an NEC Tour event, a qualifying pre-round shall be played to qualify for the Main Draw. The lowest ranked players in the Main Draw and the players who should be in the Second Draw will be drawn to play in the pre-round. Losers in the pre-round will receive 1 point and will have the option of playing Main Draw Consolation.
4. For the Singles Draw at all events there needs to be a minimum of 5 players for rankings points to be awarded.

ii. **Men Doubles: Main & Second Draws**

<b>MEN DOUBLES</b>						
	<b>MAIN DRAW</b>			<b>SECOND DRAW</b>		
	<b>Americas</b>	<b>Europe Africa</b>	<b>Asia Oceania</b>	<b>Americas</b>	<b>Europe Africa</b>	<b>Asia Oceania</b>
<b>GS</b>	4	4	4	-	-	-
<b>SS</b>	16	16	16	8	8	8
<b>ITF 1</b>	16	16	12	8	8	8
<b>ITF 2</b>	8	12	8	8	8	8
<b>ITF 3</b>	8	8	8	8	8	8
<b>Fut.</b>	8	8	8	8	8	8

Note:

1. At Grand Slams, Super Series, ITF 1 & ITF 2 events the Main Draw Doubles sizes cannot be increased.
2. From Super Series to ITF 3 events the Main and Second Draw Doubles will only be allocated ranking points if there is a minimum of 5 doubles teams in the draw.
3. When there are less than five doubles teams in the Second Draw, a qualifying pre-round shall be played to qualify for the Main Draw. The lowest ranked players in the Main Draw and the players who should be in the Second Draw will be drawn to play in the pre-round. Losers in the pre-round will receive 1 point and will have the option of playing Main Draw Consolation.
4. At ITF 3 and Futures events the Main Draw and Second Draw Doubles can be combined in order to ensure the draws have enough doubles teams to constitute a draw. Ranking points will only be awarded from the set draw size advertised and to draws with a minimum of 5 doubles teams. Grand Slam events award points for a doubles draw of 4.
5. At ITF Futures events there needs to be a minimum of 4 doubles pairs for ranking points to be awarded.

iii. **Women Singles and Doubles**

<b>WOMEN SINGLES</b>						
	<b>MAIN DRAW</b>			<b>SECOND DRAW</b>		
	<b>Americas</b>	<b>Europe Africa</b>	<b>Asia Oceania</b>	<b>Americas</b>	<b>Europe Africa</b>	<b>Asia Oceania</b>
<b>GS</b>	8	8	8	-	-	-
<b>SS</b>	24	24	24	16	16	16
<b>ITF 1</b>	24	24	16	16	16	8
<b>ITF 2</b>	-	-	-	-	-	-
<b>ITF 3</b>	-	-	-	-	-	-
<b>Fut.</b>	-	-	-	-	-	-

Note:

1. The draw sizes mentioned in the tables above are set draw sizes and all Super Series and ITF 1 events must hold separate Main and Second Draws.
2. At Grand Slam, Super Series and ITF 1 events the size of the Main Draw Singles cannot be increased.
3. At Super Series and ITF 1 events the size of the Second Draw can be increased. Ranking points will only be awarded from the set draw size advertised and for draws with a minimum of 5 players.
4. When there are less than five singles players in the Second Draw of a Super Series or ITF 1 event a qualifying pre-round shall be played to qualify for the Main Draw. The lowest ranked players in the Main Draw and the players who should be in the Second Draw will be drawn to play in the pre-round. Losers in the pre-round will receive 1 point and will have the option of playing Main Draw Consolation.
5. For all other events: All ITF 2, ITF 3 and Futures events there are no Singles Second Draw for women. All women will play in one extended Main Draw. Ranking points will be awarded for draws of 8, 12, 16, 24 and 32 depending on the number of entries.
6. For the Singles Draw at all events there are needs to be a minimum of 5 players for ranking points to be awarded.

<b>WOMEN DOUBLES</b>						
	<b>MAIN DRAW</b>			<b>SECOND DRAW</b>		
	<b>Americas</b>	<b>Europe Africa</b>	<b>Asia Oceania</b>	<b>Americas</b>	<b>Europe Africa</b>	<b>Asia Oceania</b>
<b>GS</b>	4	4	4	-	-	-
<b>SS</b>	12	12	12	8	8	8
<b>ITF 1</b>	12	12	8	8	8	4
<b>ITF 2</b>	-	-	-	-	-	-
<b>ITF 3</b>	-	-	-	-	-	-
<b>Fut.</b>	-	-	-	-	-	-

Note:

1. The draw sizes mentioned in the tables above are set draw sizes and all Super Series and ITF 1 events must hold separate Main and Second Doubles Draws.
2. At Grand Slam, Super Series and ITF 1 events the size of the Main Draw Doubles cannot be increased.
3. For Super Series and ITF 1 Series the size of the Second Draw can be increased. Ranking points will only be awarded from the set draw size advertised and draws with a minimum of 5 doubles teams.
4. When there are less than five doubles pairs in the Second Draw of a Super Series or ITF 1 event a qualifying pre-round shall be played to qualify for the Main Draw. The lowest ranked pair in the Main Draw and the players who should be in the Second Draw will be drawn to play in the pre-round. Losers

in the pre-round will receive 1 point and will have the option of playing Main Draw Consolation.

5. For all other events: All ITF 2, ITF 3 and ITF Futures Series there are no Doubles Second Draws for women. All women will play in one extended Main Draw. Ranking points will be awarded for draws of 8, 12, 16, 24 and 32 depending on the number of entries.
6. From Super Series to ITF 2 Series events there needs to be a minimum of 5 doubles teams for ranking points to be awarded. Grand Slam events award points for a doubles draw of 4.
7. At ITF 3 events there needs to be a minimum of 4 doubles teams for ranking points to be awarded.
8. At Futures events there needs to be a minimum of 3 doubles teams for ranking points to be awarded.

**iv. Quad Singles and Doubles**

<b>QUAD SINGLES</b>						
	<b>MAIN DRAW</b>			<b>SECOND DRAW</b>		
	<b>Americas</b>	<b>Europe Africa</b>	<b>Asia Oceania</b>	<b>Americas</b>	<b>Europe Africa</b>	<b>Asia Oceania</b>
<b>GS</b>	4	-	4	-	-	-
<b>SS</b>	24	24	24	16	16	16
<b>ITF 1</b>	16	16	16	16	16	8
<b>ITF 2</b>	-	-	-	-	-	-
<b>ITF 3</b>	-	-	-	-	-	-
<b>Fut.</b>	-	-	-	-	-	-

Note:

1. The draw sizes mentioned in the tables above are set draw sizes and all Super Series and ITF 1 events must hold separate Main and Second Draws.
2. At Grand Slam, Super Series and ITF 1 events the size of the Main Draw Singles cannot be increased.
3. At Super Series and ITF 1 events the size of the Second Draw can be increased. Ranking points will only be awarded from the set draw size advertised and for draws with a minimum of 5 players.
4. When there are less than five singles players in the Second Draw of a Super Series or ITF 1 event a qualifying pre-round shall be played to qualify for the Main Draw. The lowest ranked players in the Main Draw and the players who should be in the Second Draw will be drawn to play in the pre-round. Losers in the pre-round will receive 1 point and will have the option of playing Main Draw Consolation.
5. For all other events: All ITF 2, ITF 3 and Futures events there are no Singles Second Draw for Quads. All Quads will play in one extended Main Draw.

Ranking points will be awarded for draws of 8, 12, 16, 24 and 32 depending on the number of entries.

- For the Singles Draw at all events there needs to be a minimum of 5 players for ranking points to be awarded. Grand Slam events award points for a draw of 4.

<b>QUAD DOUBLES</b>						
	<b>MAIN DRAW</b>			<b>SECOND DRAW</b>		
	<b>Americas</b>	<b>Europe Africa</b>	<b>Asia Oceania</b>	<b>Americas</b>	<b>Europe Africa</b>	<b>Asia Oceania</b>
<b>GS</b>	2	-	2	-	-	-
<b>SS</b>	12	12	12	8	8	8
<b>ITF 1</b>	8	8	8	8	8	4
<b>ITF 2</b>	-	-	-	-	-	-
<b>ITF 3</b>	-	-	-	-	-	-
<b>Fut.</b>	-	-	-	-	-	-

Note:

- The draw sizes mentioned in the tables above are set draw sizes and all Super Series and ITF 1 events must hold separate Main and Second Doubles Draws.
- At Grand Slam, Super Series and ITF 1 events the size of the Main Draw Doubles cannot be increased.
- For Super Series and ITF 1 Series the size of the Second Draw can be increased. Ranking points will only be awarded from the set draw size advertised and draws with a minimum of 5 doubles teams.
- When there are less than five doubles pairs in the Second Draw of a Super Series or ITF 1 event a qualifying pre-round shall be played to qualify for the Main Draw. The lowest ranked pair in the Main Draw and the players who should be in the Second Draw will be drawn to play in the pre-round. Losers in the pre-round will receive 1 point and will have the option of playing Main Draw Consolation.
- For all other events: All ITF 2, ITF 3 and ITF Futures Series there are no Doubles Second Draws for Quads. All Quads will play in one extended Main Draw. Ranking points will be awarded for draws of 8, 12, 16, 24 and 32 depending on the number of entries.
- From Super Series to ITF 2 Series events there needs to be a minimum of 5 doubles teams for ranking points to be awarded. Grand Slam events award points for a doubles draw of 2.
- At ITF 3 events there needs to be a minimum of 4 doubles teams for ranking points to be awarded.
- At Futures events there needs to be a minimum of 3 doubles teams for ranking points to be awarded.

e) **Women and Quad Draws**

Where Women and Quad Draws are not indicated on the ITF website or in the ITF Tournament Guide, it is assumed that those events do not offer these draws. If, nevertheless, enough women and quad players enter these events, ranking points will be awarded from one classification lower than the men (except for Futures events where classification remains the same for all three categories).

f) **Consolation**

Tournaments are requested to organise a consolation draw for all the first match losers of all the Main singles draws. Non-seeded players losing in the second round who have received a 'bye' in the first round can play Consolation Draw.

It is the responsibility of the tournament and players to verify if there are enough players in a draw to receive ranking points. Players who wish to play consolation must sign in with the tournament. Players are not obligated to play consolation. Under no circumstances should a tournament include a player in the consolation draw that has not signed in. Points will be awarded to the winner and runner-up of the men's, women's and quad consolation draws at Futures Series to ITF 1 Series events. At Super Series events the semi-finalists of the men's, women's and quad consolation draws will also receive ranking points. There should be a minimum of four players for points to be awarded. No bonus points will be awarded in the consolation draw. The Wheelchair Tennis Code of Conduct will be enforced in all consolation draw matches.

g) **Qualifying pre-round**

When there are less than five singles players and five doubles teams in the Second Draw, a qualifying pre-round shall be played to qualify for the Main Draw. The lowest ranked players in the Main Draw and the players who should be in the Second Draw will be drawn to play in the pre-round. Losers in the pre-round will receive 1 point and will have the option of playing Main Draw Consolation.

For details on how to make the qualifying pre-round, please check Section 42 "Making the Draw".

i) **Late withdrawal**

The referee is required to inform the ITF of any late withdrawal.

If late withdrawals affect the minimum number of players needed, ranking points still will be awarded for the draw provided that the Referee has informed the ITF of the withdrawal/s.

### 39. SEEDS

All tournaments will have a seeded draw with seeds determined as follows:

**a) Seedings List**

Seedings will not be official until the draw is made and shall be determined by the Referee. The ranking dated the Monday of the week before the tournament week shall be used to determine the seedings in the Main, Second and Consolation Draws. All other draws can be made as decided by the Referee.

**b) Number of Seeds**

The number of players or doubles teams to be seeded must be as follows:

<u>Number of players or doubles teams</u>	<u>Number of seeds</u>
4-8	2
9-16	4
17-32	8
33-64	16

The number of players to be seeded should be based on the actual draw size and not to the set draw size.

**c) Singles**

Individual players who have equal ranking should be drawn by lot.

**d) Doubles**

The seeding for the doubles will be made by adding the individual doubles ranking from both players in a pair. The pair with the lowest combined ranking will be seeded before the other pair. If two doubles teams have the same combined ranking, the pair with the highest ranked individual player, according to the doubles ranking should be seeded first.

### 40. WILD CARDS (SINGLES AND DOUBLES)

Wild Cards are given to players to be included in the draw at the sole discretion of the Tournament Director or Tournament Committee. The number of Wild Cards will be allocated according to the size of the set draw as follows; even when the draw size is extended, wild cards will be allocated according to the original set draw sizes advertised in the draw tables.

For top players who are under the rule of restriction for top players:  
If ranking of any of the players mentioned above changes to outside of the restricted ranking at any time after the entry deadline, a player can be awarded a Wild Card.

Set Draw Size	No. of Wild Cards
32	4
24	4
16	2
12	1
8	1
4	1

#### **41. FEED UP CARDS (SINGLES ONLY)**

Feed Up Cards will be awarded to the winner of the Second Draw. Players can use their Feed Up Cards to enter the Main Draw at up coming events that are lower, the same level or one level higher classified than at which they won the Second Draw.

Winner of 2nd Draw Futures → Feed Up Card for Futures, ITF 3

Winner of 2nd Draw ITF 3 → Feed Up Card for Futures, ITF 3, ITF 2

Winner of 2nd Draw ITF 2 → Feed Up Card for Futures, ITF 3, ITF 2, ITF 1

Winner of 2nd Draw ITF 1 → Feed Up Card for Futures, ITF 3, ITF 2, ITF 1, SS

Winner of 2nd Draw SS → Feed Up Card for Futures, ITF 3, ITF 2, ITF 1, SS

In case a number of players apply to use their Feed Up Card at the same tournament, the tournament must accept the highest ranked player by the entry deadline of the tournament. Players must use their Feed Up Card within six (6) months after winning the tournament.

Feed Up Cards must be allocated by the entry deadline but Wild Cards can be allocated at a later stage. The ITF must be informed of Feed Up Cards at the entry deadline.

If there are no requests for Feed Up Cards, these places will be used for the next player on the ranking list.

Only one feed-up card will be allocated.

Feed-up cards cannot be used to enter Grand Slam and Singles Masters events.

#### **42. MAKING THE DRAW**

The Singles and Doubles Main and Second Draw and Consolation Draw should be made by a qualified Referee, using for seeding purposes the ITF Wheelchair Tennis Ranking dated the Monday the week before the tournament commences.

The Main and Second draws should be made **one (1) day** before the start of play and shall be made in public, with at least one player who is competing in the tournament present. Once all entries are known, the Consolation Draw must be made following the same procedure used for the Main/Second Draws.

The Main/Second/Consolation draws shall be made as follows:-

- i. Place seed 1 on line 1 and seed 2 on line 8 (8 draw), 16 (16 draw), 32 (32 draw).
- ii. To determine the placement of the remaining seeds, draw in pairs of two (seeds 3 and 4) and groups of four (seeds 5-8, 9-12 and 13-16) from top to bottom as follows:-

<b>Seeds</b>	<b>16 draw</b>	<b>32 draw</b>	<b>64 draw</b>
3 and 4	5 12	9 24	17 48
5, 6, 7 and 8		8 16 17 25	16 32 33 49
9,10,11 and 12			9 25 40 56
13, 14, 15 and 16			8 24 41 57

- iii. Byes  
If there are byes they shall be given to the seeds in descending order and thereafter byes are drawn for placement in the draw so as to be distributed equally in the sections of the draw.
- iv. Qualifying pre-round  
When there are less than five singles players and doubles teams in the Second Draw, a qualifying pre-round shall be played to qualify for the Main Draw. The lowest ranked players in the Main Draw will play against the players who should be in the Second Draw.

The Main Draw should be made as described above, but in place of the names of the lowest ranked players or teams (who are required to play in

the pre-round), the lines where they are drawn should be designated as “Qualifier.”

For the qualifying pre-round, the players are drawn by lot.

At the conclusion of the qualifying pre-round, the successful qualifiers shall be drawn by lot again for their places in the Main Draw and be placed on the “Qualifier” lines from top down.

Losers in the qualifying pre-round will receive 1 point and will have the option of playing Main Draw Consolation.

#### **43. CHANGES AFTER THE DRAW**

**a) Withdrawal of Seeds**

If a seeded player withdraws after the draw has been made but prior to the release of the Order of Play for the first day of the Main Draw, the vacancy shall be filled by the next eligible player to be seeded. The highest ranked Second Draw player may fill the vacated position in the draw.

**b) Mistakes in the Draw**

Every effort will be made to ensure that the draws are made correctly according to the Rules laid out in these Rules and Regulations. However, should a mistake be made, the Referee, shall make a decision which shall be final and binding on all concerned, based on the principles below.

*Note: No changes can be made to the draw once that draw has commenced play.*

**c) Incorrect Seeding**

If a player has been seeded incorrectly, and the correction of the seeding only affects one (1) other player’s position in the draw, the two (2) players should be swapped over. In this case the draw need not be remade.

If a player has been seeded incorrectly and the correction of the seeding affects two (2) or more players’ position in the draw, the draw must be remade.

**d) Inclusion/exclusion of Players**

If a mistake is made in the draw due to non-inclusion of players who do not have written confirmation of their acceptance into the tournament, the draw need not be rectified. If a player is excluded in the draw due to an error of the Tournament Committee or Referee, the player should be

placed on the last available bye line according to Section 38 “Making the Draw” if there are any bye lines available. If the draw is full to a complete draw size of 8, 16, 32 or 64, the draw must be remade. If a player has been included by mistake of the Tournament Committee or Referee, he should be taken out of the draw.

#### 44. PRIZE MONEY

Prize money shall be paid in cash or by cheque on-site or by bank transfer immediately following the event in US Dollars unless prior approval to pay in any other currency is obtained in writing from the ITF no less than four (4) months prior to the start of the tournament.

A non-US tournament may elect to pay on-site prize money in US Dollars or in local currency. If local currency is selected, then the exchange rate for a given tournament (official ITF exchange rate) shall be the average of the six (6) months immediately preceding six (6) months prior to the tournament. If on the Monday, seven (7) days prior to the start of the tournament, there is a fluctuation in the official ITF exchange rate of five percent (5%) or more, up or down, then such exchange rate shall be adjusted, up or down as follows:

Exchange Rate Fluctuation	Exchange Rate Adjustment
Less than 5%	None
Between 5-10%	5%
10% or greater	One-half the Exchange Rate Percentage Fluctuation *

(\* For example, if the currency fluctuates 11% from the authorized exchange rate, the exchange rate will be adjusted by 5.5%).

Each Tournament electing to pay on-site prize money in a specific non-US currency shall obtain from the ITF the official ITF exchange rate determined as above provided and shall use the same.

Prize money will be split based on the percentages of men, women and quads in the main draw for Grand Slams, Super Series and ITF 1 events. For ITF 2, ITF 3 and Future Series events the percentages are based on the figures in the tables below.

There is no Prize Money for the Second Draw.

In case a tournament cannot be completed because of bad weather conditions, prize money and ranking points will be added up and split equally between the players remaining in the competition.

**a) Men's Singles and Doubles**

The draw sizes mentioned in the tables below are for prize money distribution purposes only. If there are fewer players than the numbers anticipated in the tables below, prize money percentages will be based on the actual number of men playing.

<b>MEN SINGLES</b>			
	<b>Americas</b>	<b>Europe Africa</b>	<b>Asia Oceania</b>
<b>GS</b>	8	8	8
<b>SS</b>	32	32	32
<b>ITF 1</b>	32	32	24
<b>ITF 2</b>	16	24	16
<b>ITF 3</b>	<u>16</u>	16	16
<b>Fut.</b>	<u>16</u>	<u>16</u>	<u>16</u>

<b>MEN DOUBLES</b>			
	<b>Americas</b>	<b>Europe Africa</b>	<b>Asia Oceania</b>
<b>GS</b>	4	4	4
<b>SS</b>	16	16	16
<b>ITF 1</b>	16	16	12
<b>ITF 2</b>	8	12	8
<b>ITF 3</b>	<u>8</u>	8	8
<b>Fut.</b>	<u>8</u>	<u>8</u>	<u>8</u>

**b) Women's Singles and Doubles**

The draw sizes mentioned in the tables below are for prize money distribution purposes only. Even if there are more women playing, prize money can only be awarded from the draw sizes specified. If there are fewer players than the numbers anticipated in the tables below, prize money percentages will be based on the actual number of women playing.

<b>WOMEN SINGLES</b>			
	<b>Americas</b>	<b>Europe Africa</b>	<b>Asia Oceania</b>
<b>GS</b>	8	8	8
<b>SS</b>	24	24	24
<b>ITF 1</b>	24	24	16
<b>ITF 2</b>	8	8	8
<b>ITF 3</b>	8	8	8
<b>Fut.</b>	8	8	8

<b>WOMEN DOUBLES</b>			
	<b>Americas</b>	<b>Europe Africa</b>	<b>Asia Oceania</b>
<b>GS</b>	4	4	4
<b>SS</b>	12	12	12
<b>ITF 1</b>	12	12	8
<b>ITF 2</b>	4	4	4
<b>ITF 3</b>	4	4	4
<b>Fut.</b>	4	4	4

**c) Quad Singles and Doubles**

The draw sizes mentioned in the tables below are for prize money distribution purposes only. Even if there are more quad players playing, prize money can only be awarded from the draw sizes specified. If there are fewer players than the numbers anticipated in the tables below, prize money percentages will be based on the actual number of quad players playing.

<b>QUAD SINGLES</b>			
	<b>Americas</b>	<b>Europe Africa</b>	<b>Asia Oceania</b>
<b>GS</b>	4	-	4
<b>SS</b>	24	24	24
<b>ITF 1</b>	16	16	16
<b>ITF 2</b>	8	8	8
<b>ITF 3</b>	8	8	8
<b>Fut.</b>	8	8	8

<b>QUAD DOUBLES</b>			
	<b>Americas</b>	<b>Europe Africa</b>	<b>Asia Oceania</b>
<b>GS</b>	2	-	2
<b>SS</b>	12	12	12
<b>ITF 1</b>	8	8	8
<b>ITF 2</b>	4	4	4
<b>ITF 3</b>	4	4	4
<b>Fut.</b>	4	4	4

#### **d) Percentages for prize money breakdown**

##### **Version 1.**

If 100% of prize money is allocated to singles.

Set Draw Sizes	Percentage of total prize money given to each round (%)						
	WR	RU	SF	QF	1/16	1/32	1/64
4	45	25	15	-	-	-	-
6	40	20	13	7			
8	30	14	12	8	-	-	-
12	28	12	10	6	4	-	-
16	26	12	9	5	3	-	-
24	22	10	6	4	3	2	-
32	18	8	5	3	2.5	2	-
48	14	6	4	3	2.5	1.5	1

##### **Version 2.**

If 80% of prize money is allocated to singles and 20% to doubles.

##### **Singles**

Set Draw Sizes	Percentage of total prize money given to each round (%)						
	WR	RU	SF	QF	1/16	1/32	1/64
4	36	18	13	-	-	-	-
6	30	16	11	6	-	-	-
8	24	12	9	6.5	-	-	-
12	22	12	8	5	2.5	-	-
16	20	10	7	4	2.5	-	-
24	18	10	6	3.5	2	1.25	-
32	16	8	5	3	1.75	1.25	-
48	14	8	4	3	1.5	1	0.625

### **Doubles**

Set Draw	Percentage of total prize money given to each TEAM (%)					
Sizes	WR	RU	SF	QF	1/16	1/32
2	14	6	-	-	-	-
3	12	5	3	-	-	-
4	9	4	3.5	-	-	-
6	8	4	2.5	1.5	-	-
8	7	3	2.5	1.25	-	-
12	6	3	2	1	0.75	-
16	5	2	1.5	1	0.75	-
24	4	2	1.5	1	0.5	0.375

*Note: In circumstances when one draw is not held the prize money allocated to that draw must be distributed to the total Main Draw prize money.*

## **45. ITF WHEELCHAIR TENNIS RANKING SYSTEM**

The ITF Ranking Department has developed the following ranking points structure for the Singles and Doubles Main Draw (men, women, quads and juniors), the Singles Consolation Draw (men, women and quads) and the Singles and Doubles Second Draw (men and women and quads where applicable).

The NEC Wheelchair Tennis ranking is calculated by combining the points of the top nine (9) tournaments for men, the top seven (7) tournaments for women and the top six (6) tournaments for quads, based on a 52 week roll-over period. All men, women and quads must have competed in a minimum of two events and have earned points from the two events to obtain a ranking. For juniors, ranking points are obtained after having competed in one event.

The following draws of any tournament are eligible to gain points on the NEC Wheelchair Tennis ranking:-

### **Grand Slam Events**

- Men's, women's and quad main draws, singles and/or doubles.

### **SS and ITF 1 – Futures Events**

- Men's Main Draw and Second Draw, singles and doubles.
- Quad and Women's Main and Second Draws (where applicable), singles and doubles.
- Men's, women's and quad Main Draw singles consolation winner and runner-up; and semi-finals at Super Series events only.

### **Points allocation**

- A player is awarded points according to the round achieved.

- A player losing in the pre-round is awarded one (1) point.
- A player losing in the first round is awarded two (2) points.
- A player who receives a “bye” in the first round and loses in the second round receives two (2) points.
- A player who receives a “walkover” in the first round, and loses in the second round, receives second round points.
- A player who is deemed a “No Show” in the first round will receive no points and no prize money for that draw.
- A player who receives a walkover in a round does not receive bonus points for that round.
- There are no separate point tables for doubles. The same line of points will be allocated as for the singles draws.

### **Tied Ranking**

When two or more players have the same total number of points, ties shall be broken as follows:

1. The number of events played e.g. the player with the least number of events played will be ranked higher.
2. If two or more players are still equal, players will be ranked based on the classification of tournaments where points have been won e.g. SS and ITF 1 receive higher recognition.

### **Bonus points**

Bonus points are awarded in each round for defeating a player who is ranked in the top part of the ranking. Bonus points are calculated weekly for every tournament, which is included on the NEC Wheelchair Tennis Tour ranking. The bonus points system for Men, Women and Quads is as follows:

Ranking		Bonus points received:			
Singles	Doubles	GS	SS	ITF 1	ITF 2/3/Futures
1	2-3	100	75	50	25
2-5	4-10	75	51	34	17
6-10	11-20	50	24	16	8
11-20	21-40	25	9	6	3
21-30	41-60	10	6	4	2
31-50	61-100	5	3	2	1

*Note: Bonus points for doubles are based on the combined ranking of the doubles pair.*

At the NEC Singles Masters and Doubles Masters the bonus points will be the same as those awarded for Grand Slams.

Bonus points will be awarded at the World Team Cup. The bonus points will be the same as those awarded at ITF 1 events. Round points will not apply.

### Ranking Points

#### A. MAIN DRAW (Singles and Doubles)

##### MEN

Grade	Draw	WR	RU	SF	QF	12/16	24/32	64/QR
SS	32	650	456	292	162	90*	2	1
	24	485	340	218	121	67*	2	1
ITF 1	32	335	235	151	84	47*	2	1
	24	325	228	146	81	45*	2	1
	8**	295	207	131*	2			
ITF 2	24	220	154	99	55	29*	2	1
	16	195	137	88	49*	2		1
	12	170	119	77	43*	2		1
ITF 3	16	120	85	55	30*	2		1
	12	95	67	43	24*	2		1
	8	70	49	31*	2			1
Futures	16	55	42	29	20*	2		1
	12	50	40	24	18*	2		1
	8	45	32	20*	2			1

##### WOMEN

Grade	Draw	WR	RU	SF	QF	12/16	24/32	QR
SS	32	650	456	292	162	90*	2	1
	24	485	340	218	121	67*	2	1
	16	460	322	206	114*	2		1
ITF 1	12	435	304	194	107*	2		1
	24	325	228	146	81	45*	2	1
	16	315	221	141	78*	2		1
	12	305	214	136	75*	2		1
	8	295	207	131*	2			1
ITF 2	32	245	172	110	61	32*	2	
	24	220	154	99	55	29*	2	
	16	195	137	88	49*	2		
	12	170	119	77	43*	2		
	8	145	102	66*	2			

<b>ITF 3</b>	<b>24</b>	145	102	66	36	18*	2
	<b>16</b>	120	85	55	30*	2	
	<b>12</b>	95	67	43	24*	2	
	<b>8</b>	70	49	31*	2		
<b>Futures</b>	<b>16</b>	55	42	29	20*	2	
	<b>12</b>	50	40	24	18*	2	
	<b>8</b>	45	32	20*	2		

### QUAD

<b>Grade</b>	<b>Draw</b>	<b>WR</b>	<b>RU</b>	<b>SF</b>	<b>QF</b>	<b>12/16</b>	<b>24/32</b>	<b>QR</b>
<b>SS</b>	<b>24</b>	650	456	292	162	90*	2	1
	<b>16</b>	485	340	218	121*	2		1
	<b>12</b>	460	322	206	114*	2		1
	<b>8</b>	435	304	194*	2			1
<b>ITF 1</b>	<b>24</b>	325	228	146	81	45*	2	1
	<b>16</b>	315	221	141	78*	2		1
	<b>12</b>	305	214	136	75*	2		1
	<b>8</b>	295	207	131*	2			1
<b>ITF 2</b>	<b>24</b>	220	154	99	55	29*	2	
	<b>16</b>	195	137	88	49*	2		
	<b>12</b>	170	119	77	43*	2		
	<b>8</b>	145	102	66*	2			
<b>ITF 3</b>	<b>16</b>	120	85	55	36*	2		
	<b>12</b>	95	67	43	30*	2		
	<b>8</b>	70	49	31*	2			
<b>Futures</b>	<b>16</b>	55	42	29	20*	2		
	<b>12</b>	50	40	24	18*	2		
	<b>8</b>	45	32	20*	2			

\* = points not applicable for doubles events, instead of points mentioned two points will be allocated to that round.

\*\* = applicable to the ABN AMRO tournament only.

### JUNIORS (Singles ONLY)

<b>Grade</b>	<b>Draw</b>	<b>WR</b>	<b>RU</b>	<b>SF</b>	<b>QF</b>	<b>12/16</b>	<b>24/32</b>
--------------	-------------	-----------	-----------	-----------	-----------	--------------	--------------

### MASTERS

<b>Boys</b>	<b>8</b>	30	20	13	2		
<b>Girls</b>	<b>4</b>	30	20	2			

### GRADE A EVENTS

<b>Boys</b>	<u>16</u>	<u>30</u>	<u>20</u>	<u>13</u>	<u>7</u>	2
	<u>8</u>	<u>25</u>	<u>15</u>	<u>10</u>	<u>2</u>	

<b>Girls</b>	<u>8</u>	<u>30</u>	<u>20</u>	<u>10</u>	<u>2</u>	
	<u>4</u>	<u>25</u>	<u>15</u>	<u>2</u>		

### OTHER

<b>Boys</b>	32	25	19	13	8	4	2
	16	20	15	12	7	2	
	8	15	10	7	2		
	4	10	5	2			
<b>Girls</b>	8	15	10	7	2		
	4	10	5	2			

### GRAND SLAMS

#### **MEN**

<b>Draw</b>	<b>WR</b>	<b>RU</b>	<b>SF/3<sup>rd</sup></b>	<b>QF/4<sup>th</sup></b>
8	800	500	375***	100

(3<sup>rd</sup> and 4<sup>th</sup> play off points applicable for the Wimbledon Doubles Event only).

#### **WOMEN**

<b>Draw</b>	<b>WR</b>	<b>RU</b>	<b>SF/3<sup>rd</sup></b>	<b>QF/4<sup>th</sup></b>
8	800	500	375***	100

#### **QUAD**

<b>Draw</b>	<b>WR</b>	<b>RU</b>	<b>3<sup>rd</sup></b>	<b>4<sup>th</sup></b>
4	800	500***	375	100

\*\*\* = points not applicable for doubles events, instead of points mentioned one hundred points will be allocated to that round.

*Note: At Grand Slams wild card entrants losing in the first round will receive two points*

## Singles and Doubles Masters

### MEN

Event	Draw	WR	RU	3 <sup>RD</sup>	4 <sup>TH</sup>	5 <sup>TH</sup>	6 <sup>TH</sup>	7 <sup>TH</sup>	8 <sup>TH</sup>
Singles Masters	8	800	500	400	350	275	200	150	100
Doubles Masters	8	800	500	400	350	275	200	150	100

### WOMEN

Event	Draw	WR	RU	3 <sup>RD</sup>	4 <sup>TH</sup>	5 <sup>TH</sup>	6 <sup>TH</sup>	7 <sup>TH</sup>	8 <sup>TH</sup>
Singles Masters	8	800	500	400	350	275	200	150	100
Doubles Masters	4	800	500	375	100				

### QUADS

Event	Draw	WR	RU	3 <sup>RD</sup>	4 <sup>TH</sup>
Singles Masters	4	800	500	375	100
Doubles Masters	4	800	500	375	100

## B. CONSOLATION MAIN DRAW (Singles only)

### MEN

Grade	Draw	WR	RU	SF
SS	16	72	36	18
	12	63	32	16
	8	54	27	14
ITF 1	16	45	23	
	12	36	18	
	8	34	17	
	6	32	16	
	4	30	15	
ITF 2	12	20	10	
	8	19	10	
	6	18	9	
	4	17	9	
ITF 3	8	15	8	
	6	14	7	
	4	13	7	
<u>Futures</u>	<u>8</u>	<u>12</u>	<u>6</u>	
	<u>6</u>	<u>10</u>	<u>5</u>	
	<u>4</u>	<u>8</u>	<u>4</u>	

## WOMEN

Grade	Draw	WR	RU	SF
SS	16	72	36	18
	12	63	32	16
	8	54	27	14
	6	45	23	12
ITF 1	16	36	18	
	12	34	17	
	8	32	16	
	6	30	15	
ITF 2	4	28	14	
	16	20	10	
	12	19	10	
	8	18	9	
ITF 3	6	17	9	
	4	16	8	
	12	15	8	
	8	14	7	
<u>Futures</u>	6	13	7	
	4	12	6	
	<u>8</u>	<u>10</u>	<u>5</u>	
	<u>6</u>	<u>8</u>	<u>4</u>	
	<u>4</u>	<u>6</u>	<u>3</u>	

## QUAD

Grade	Draw	WR	RU	SF
SS	12	72	36	18
	8	63	32	16
	6	54	27	14
	4	45	23	12
ITF 1	12	36	18	
	8	34	17	
	6	32	16	
	4	30	15	
ITF 2	12	20	10	
	8	19	10	
	6	18	9	
	4	17	9	
ITF 3	8	15	8	
	6	14	7	
	4	13	7	

<b><u>Futures</u></b>	<u>8</u>	<u>10</u>	<u>5</u>
	<u>6</u>	<u>8</u>	<u>4</u>
	<u>4</u>	<u>6</u>	<u>3</u>

### C. SECOND DRAW (Singles and Doubles)

#### MEN

Grade	Draw	WR	RU	SF	QF	12/16
SS	16	100	50	25	13*	2
ITF 1	16	50	25	13	7*	2
ITF 2	16	40	20	10	5*	2
	12	36	18	9	5*	2
	8	32	16	8*	2	
ITF 3	16	28	14	7	4*	2
	8	24	12	6*	2	
<b><u>Futures</u></b>	<u>16</u>	<u>18</u>	<u>10</u>	<u>6</u>	<u>3*</u>	<u>2</u>
	<u>8</u>	<u>14</u>	<u>8</u>	<u>4*</u>	<u>2</u>	

#### WOMEN

Grade	Draw	WR	RU	SF	QF	12/16
SS	16	100	50	25	13*	2
	8	75	43	21*	2	
ITF 1	16	50	25	13	7*	2
	8	45	22	11*	2	

#### QUAD

Grade	Draw	WR	RU	SF	QF	12/16
SS	16	100	50	25	13*	2
	8	75	43	21*	2	
ITF 1	16	50	25	13	7*	2
	8	45	22	11*	2	

\* = points not applicable for doubles events, instead of points mentioned two points will be allocated to that round.

# XI. WHEELCHAIR TENNIS MASTERS (SINGLES AND DOUBLES)

## 46. COMPETITION

- a) **Title**  
The Competition shall be called the “Wheelchair Tennis Masters”.
- b) **Ownership**  
The Competition shall be owned by and under direction and control of the International Tennis Federation, herein after referred to as the “Federation”.
- c) **Mandatory Event**  
The Singles Masters is a mandatory event for those players who qualify at entry deadline. If a player who receives direct entry chooses not to attend, he/she receives “0” points and the event will be included in the best of “x” events (best of 9 for the men, best of 7 for the women and best of 6 for the quads).
- d) **Competition**  
The Competition shall be open for singles to the top eight (8) players for the men and women and the top four (4) quad players on the ITF Wheelchair Tennis Singles Rankings. For the doubles, the top eight (8) men, top four (4) women and top four (4) quad doubles teams will be accepted based on the combined doubles ranking of the players. The date used for the rankings shall be decided by the ITF Wheelchair Tennis Committee.
- e) **Competition Format**  
The Competition shall be a Round Robin format. The men’s and women’s singles and the men’s doubles events shall have 2 groups of 4 players/teams each with 8 seeds. The Round Robin shall determine the 4 best players/teams for the semi-finals. The winners of these semi-finals will compete in a final and the losers will play-off for 3<sup>rd</sup> and 4<sup>th</sup> place. Teams/players finishing 3<sup>rd</sup> in each pool will play-off for 5<sup>th</sup> and 6<sup>th</sup> position and teams/players finishing 4<sup>th</sup> in each pool will play-off for 7<sup>th</sup> and 8<sup>th</sup> position.

For the women’s doubles, quad singles and doubles, there shall be 1 group of 4 players/teams. The first and second placed player/teams of the pool will play the final and the third and fourth placed in the pool will play-off for 3<sup>rd</sup> and 4<sup>th</sup> position.

The seeds will be determined by the latest available ITF Wheelchair Tennis Ranking. All matches shall be the best of three (3) tie-break sets.

**f) Direct Acceptances**

The top eight (8) men and women singles players and men's doubles teams, the top four (4) women's doubles teams and the top four (4) quads singles and doubles teams on the ITF Wheelchair Tennis Ranking, shall qualify for the event as Direct Acceptances. All Direct Acceptances must be at the tournament site to attend the official draw and media conference and must be available for play through the completion of the Round Robin Competition and the knock-out Competition if eligible.

**g) Rules to be observed**

The Competition shall take place in accordance with the Rules of Tennis. Where applicable please refer to the Conduct of Events section, Chapter XII.

**h) Attendance of Official Functions**

Players must attend all official functions. Non-attendance at these functions will be treated as 'unsportsmanlike conduct' and will be dealt with under the Code of Conduct section.

## 47. CONDUCT OF THE COMPETITION

**a) Round Robin**

- i.** The field will be divided into two (2) groups of three (3) or four (4) players/teams each. Seed 1 will go in group 1 and seed 2 will go in group 2. By draw will be decided if seeds 3 and 4 will go in group 1 or 2. The same procedure will be repeated for seeds 5 and 6 and seeds 7 and 8. In the case that there are four (4) players/teams as in the Quad event, there will be one (1) group.
- ii.** Each player/team will play every other player/team in his/their group to determine the top two (2) players/teams in each group. In the case there are four (4) players/teams, the top two (2) players/teams will play the final.
- iii.** Ties shall be broken as follows:
  - (a)** If two (2) players/teams are tied with the same won-lost record after the completion of the Round Robin, the tie is broken as follows:

The winner of the match-up of the two (2) players/teams tied.
  - (b)** If three (3) players/teams are tied with the same won-lost record after completion if the Round Robin, the tie is broken as follows:

The player/team with the higher percentage of total sets won.

- (c) Any tie thereafter will be broken as follows:

The player/team with the higher percentage of total games won.

- (d) Any tie with two (2) players/teams thereafter will be decided by the results of the match between the two (2) players/teams involved.

- (e) Any tie with three (3) players/teams thereafter will be decided by the Tournament Committee or by draw.

- (f) If ties exist after the above procedures, the Tournament Committee shall make the final determination. In applying the tie break procedures above, a conduct default or retirement shall count as a straight set win or loss for purposes of Paragraphs (i) and (ii). However, games won or lost in matches with the defaulting player/team shall not be counted in the application of Paragraph (iii). A retiring player/team may still continue in the competition if it is determined by the Tournament Doctor that such player/team is able to compete at a professional level.

- iv. Any player/team defaulted pursuant to the Code of Conduct during the Round Robin competition shall be defaulted from all other matches in the Wheelchair Tennis Masters (except for loss of physical condition and/or dress and equipment OR as result of the match ending on a "Time" violation in a sequence in which there was only one misconduct violation, OR the penalty sequence included only one misconduct violation which must not have been the final violation causing the default).
- v. Any player/team that withdraws from any Round Robin match after the first round shall not be eligible for the knock-out Competition.

**b) Knock Out Competition**

- i. The top ranked player/team in each Group will be placed in separate semifinal brackets. The runner-up in each Group will be placed in the semifinal bracket with the top ranked player/team from the opposite group.
- ii. The Competition shall be completed with straight knock-out Competition for the semi-finals and finals.
- iii. There will be a play-off for the third and fourth place positions.
- iv. There will also be play-offs for all the remaining positions.

#### **48. CONDITIONS OF PLAY**

Please see Section 36, “Conditions of Play”, with the exception of 36d.

#### **49. PENALTIES**

##### **a) Withdrawals**

- i.** Players/teams whose entries have been accepted into the draw shall not be able to withdraw without risk of penalty.
- ii.** Withdrawals by players/teams shall be subject to the Code of Conduct.
- iii.** A medical certificate must be received by the ITF within fourteen (14) days after the date of withdrawal for medical reasons of a player from the Competition.
- iv.** Withdrawal before two (2) weeks of the Competition will be accepted if there is a legitimate reason, this to be decided by the ITF Wheelchair Tennis Committee. Withdrawal without legitimate reason may subject the player/ team to a fine and possible suspension for the following year's event.
- v.** Any withdrawal, before the official draw and media conference starts, shall be replaced by the next highest positioned player/team on the ITF Wheelchair Tennis Ranking, who shall be qualified as a Direct Acceptance. If this does not apply the ITF makes a decision on the replacement.
- vi.** Any no show at the official draw and media conference may be replaced by the next highest positioned player/team on the ITF Wheelchair Tennis Ranking who shall be qualified as a Direct Acceptance.

##### **b) Alternate(s)**

- i.** The next highest positioned player/team (who is not a Direct Acceptance at the time of the official draw and media conference) shall be designated as the Alternate(s), and shall replace any player who subsequently withdraws.
- ii.** The Alternate(s) is eligible to play in the knock-out Competition and to receive points and prize money if he qualifies.
- iii.** If the Alternate(s) is inserted for the second or third Round Robin match, then he shall receive any prize money and points won. If the Alternate(s) replaces a player that does not compete in his first Round Robin match, the Alternate(s) becomes a Direct Acceptance.

c) **Code of Conduct**  
All Code of Conduct offences will be dealt with under the Section XIII, "Code of Conduct".

d) **Failure to Abide by the Rules and Regulations**  
Any competing player/team who fails to conform to the Rules and Regulations may be immediately disqualified and/or shall be liable to have their entry refused for future Competitions until assurances of compliance with the Regulations are given, and subject to any further penalties set out in these Regulations.

For offences which do not justify disqualification, the ITF Wheelchair Tennis Committee may decide that a fine be imposed.

e) **Decisions and Appeals**  
The ITF Wheelchair Tennis Committee shall make all decisions and interpretations concerning the Regulations. Any appeal against the decision or interpretation of the ITF Wheelchair Tennis Committee shall be referred to the Board of Directors whose decision shall be final and binding on all parties. Any appeal shall be in writing and shall be received by the Company not later than one month after the decision has been received by the appellant. The Board of Directors shall conduct any appeal in whatever manner they deem appropriate.

## 50. **ARBITRATION**

### **Settlement of On-Site Disputes**

The Referee shall decide any on-site disputes or interpretation in accordance with the Rules of Tennis. He shall also be the final arbiter for penalties imposed under the Code of Conduct unless the Code provides for an appeal to the Federation for that offence.

## 51. **ENFORCEMENT OF THE REGULATIONS**

The above Regulations shall be binding on all players/teams eligible to compete. The ITF Board of Directors may supersede these Regulations in extraordinary circumstances and may delegate this responsibility to the Wheelchair Tennis Manager, Referee and Tournament Director on site.

## XII. WORLD TEAM CUP RULES

### 52. COMPETITION

a) **Title**

The Competition, the International Tennis Federation World Team Cup Team Championship for men, women, quads and juniors shall be called the “World Team Cup”.

b) **Ownership**

The Competition shall be owned by and under the direction and control of the International Tennis Federation, herein after referred to as the “Federation”.

c) **Nations Eligible**

The Competition shall be open only to Member Nations of both the ITF and the IWTA.

d) **Format**

The Main Draw for men and women shall be played on a knock-out principle, with a play off system to determine the ranking of all teams, at preferably one venue during one week.

The Men’s Draw will be comprised of two World Groups. World Group 1 (WG1) will consist of the top 12 nations from the previous year and the winners of the relegation matches between nations 13 & 14 of WG1 versus nations 4 & 3 of World Group 2 (WG2) respectively, plus the winner and runner up of WG2. WG2 will be made up of the losers of the above relegation matches, nations 15 & 16 of WG1 and nations 5-8 of World Group 2 from the previous year.

From 2012, the World Team Cup will be played under a new format, with WG1 and WG2 being reduced each to 12 teams, the top 10 Nations from 2011 will receive direct entry in the 2012 World Team Cup with the winner of WG2 and the winner of the relegation play-off match between nation 11 of WG1 and the runner-up of WG2 making up the final places for the 2012 WG1. Positions 12 to 16 of World Group 1 and the loser of the relegation match between nation 11 of WG 1 and the runner up of WG 2 will play World Group 2 in the 2012 World Team Cup. The remaining 6 nations in World Group 2 will be the winners of the 4 qualification regions plus 2 wild cards to be used for the Host Nation of the World Group and/or the largest qualification(s).

For the Quad Draw, the draw shall be played in a Round Robin format. The teams finishing in the top 2 positions of each pool will face each other in a cross-over semi final. The winners will face each other in a final and the losing semi finalists will play-off for 3<sup>rd</sup> and 4<sup>th</sup> place. Teams finishing 3<sup>rd</sup> in each pool will play-off for 5<sup>th</sup> and 6<sup>th</sup> position and the teams finishing 4<sup>th</sup> in each pool will play-off for 7<sup>th</sup> and 8<sup>th</sup> position. The ITF reserves the right to change the format depending on the number of entries.

The Main Draw for juniors shall be played in a Round Robin format. The teams finishing in the top 2 positions of each pool will face each other in a cross-over semi final. The winners will face each other in a final and the losing semi finalists will play-off for 3<sup>rd</sup> and 4<sup>th</sup> place. Teams finishing 3<sup>rd</sup> in each pool will play-off for 5<sup>th</sup> and 6<sup>th</sup> position and the teams finishing 4<sup>th</sup> in each pool will play-off for 7<sup>th</sup> and 8<sup>th</sup> position. The ITF reserves the right to change the format depending on the number of entries.

f) **Match Tie Breaks**

Match Tie Breaks will be used during the competition the following way:

- Men's World Group 1: Only in dead rubbers for doubles
- Men's World Group 2: All doubles
- Women's World Group: Only in dead rubbers for doubles
- Quads: Only in dead rubbers for doubles
- Juniors: All doubles
- Promotion Regulation Matches: All doubles

g) **Rules to be observed**

The Competition shall take place in accordance with the Rules of Tennis, the Rules of Wheelchair Tennis, the World Team Cup contract (including Appendix A, B and C) and the Wheelchair Tennis Rules and Regulations.

In submitting any entry, a Nation automatically undertakes to abide by and fulfill all their obligations under the above Rules and Regulations. Any Nation failing to honor this undertaking shall be subject to penalties given in Section 8, "Penalties" and the Code of Conduct in the Wheelchair Tennis Rules and Regulations.

## 53. ENTRIES

### **Entries and Entry Fees**

Entries from Member Nations are to be sent to the ITF. Payment of the Entry Fee must accompany the second entry form to guarantee the nation's acceptance

within the competition. The exact closing date for entries will be advised by the ITF to all members well in advance for this purpose and all competing Nations shall receive the Final List of Entries following this date. A fine will be levied to those nations who have not respected the entry fee deadline. A Wild Card will be offered to the Host Nation if they do not qualify through direct entry for the Men's, Women's and Quad event. Member Nations who submit late entries may be subject to a fine.

#### **54. PRIZE MONEY**

If the Host Nation wishes to offer prize money, the prize money will go to the Member Nation of the country and not to the individual players.

#### **55. TEAMS**

##### **a) Composition of Teams**

Each team must consist of a minimum of three (3) and a maximum of four (4), which shall include a playing Captain; or alternatively, a team of a minimum of four (4) and maximum of five (5), which shall include a non-playing Captain, unless approved in advance by the ITF.

##### **b) Team Captain**

Each team's nominated playing or non-playing Captain who may sit on court during the team's matches must satisfy the requirements of Regulation 4(f).

##### **c) Nomination of Players, Reserves and Captains**

Nominations of individual players and captains to each team must be received by the Federation at least six (6) weeks prior to the Competition. Such nominations shall be made in accordance with Regulation 4(a).

##### **d) Change of Nominations**

A Member Nation may change its nominations up to two (2) weeks prior to the Draw for the Competition by notification in writing to the Federation. Nominations may only be changed after this deadline for reasons of illness, injury or bereavement when reserve players may be substituted by notification in writing to the Federation or to the Referee should such change occur after the Draw has been made, but before the commencement of play.

- Team member withdrawals may be made without penalty up to 2 weeks prior to the competition. Within 2 weeks of the competition any withdrawals may only be made for reasons of illness, injury or bereavement. In the event of illness or injury a medical certificate must be received within fourteen (14) days after the date of

withdrawal of a team member for medical reasons from the Competition. Withdrawals for any other reason or without a medical certificate within two weeks of the competition will be subject to a fine of US\$100 per team member.

- Team member replacements may be made without penalty up to 2 weeks prior to the competition. Within 2 weeks of the competition any replacements may only be made for reasons of illness, injury or bereavement. In the event of illness or injury a medical certificate must be received within fourteen (14) days after the date of replacement for medical reasons of a team member from the Competition. Replacements for any other reason or without a medical certificate within two weeks of the competition will be subject to a fine of US\$50 per team member.

**e) Order of Merit**

The Referee shall decide each team's Order of Merit based upon the ITF Wheelchair Tennis Singles Ranking used for the Draw and shall provide all competing Nations with a copy of the final team nominations list placed in Order of Merit at the Captains' meeting. Thereafter no change may be made to the Order of Merit. In the case of any players with no such rankings, either in singles or doubles, the Referee shall take into account player's national rankings and current results as provided by the Member Nation concerned in determining the Order of Merit. The latest available ranking will be used.

Captains may appeal to the Referee to consider any special circumstances that may affect the credibility of the Order of Merit. The Referee shall have the discretion to alter a clear mistake providing this is done prior to the Draw.

**f) Qualification of a Player to Represent a Country**

- i. Any tennis player who is in good standing with his Member Nation in accordance with the ITF Rules shall be qualified to represent that country if he is a national of that country, has a current valid passport of that country and has lived in that country for twenty-four (24) consecutive months at some time, and has not represented any other country during the period of thirty-six (36) months immediately preceding the event. If a player is qualified under this sub-section above to represent more than one country and the Member Nation of one of those countries wishes to nominate him to represent it, that Member Nation shall submit an application to the ITF, with a copy to any other Member Nation concerned. Such application must be received by the ITF at least

six months prior to the event for which the player wishes to be nominated.

For the purposes of this ruling “good standing” in connection with a player shall be defined as follows:

One whom:

- Is not under a suspension imposed by his Member Nation, or by the ITF, or through the imposition of a suspension under a Code of Conduct accepted and approved by the ITF.
- Is accepted by his Member Nation as being under its jurisdiction while competing in events for which his Member Nation has nominated him.
- Makes himself available for selection of Official Team Championships and accepts the jurisdiction of his Member Nation while competing in events for which they have nominated him.
- Respects the spirit of fair play and non-violence at all times.
- Accepts the Conditions of Entry of the events he enters, including the conditions of any Code of Conduct adopted for those events.
- Agrees to undergo any medical controls, which are in operation at any event which he or she enters.

The ITF Wheelchair Tennis Committee will give a ruling having taken into account all relevant matters.

- ii. A player who has represented, or has been eligible to represent a country and such a country is divided into two or more countries, shall immediately be eligible to represent any one of those countries. A player who has represented, or has been eligible to represent a country and such country is absorbed in whole or in part by another country, shall immediately be eligible to represent such other country.
- iii. A player shall be deemed to have represented a country if he shall have been nominated and shall have accepted the nomination to play in the Paralympic Games Tennis Event or in any other ITF International Team Competition recognised by the ITF.
- iv. A Member Nation may appeal to the Board of Directors to nominate a player who is not eligible under the above Rules and the Board of Directors may agree the application if the full circumstances warrant an exception being made. Such application must be received by the ITF at least six months prior to the event for which the player wishes to be nominated.

- v. The Board of Directors and/or the Organising Committee of the event, have the right to ask a Member Nation to produce evidence to show how a player is qualified to represent that country.

**Note:** A player who represented a country under the Rules of the Federation (as defined in the Articles of Association) in force in 1994 or prior thereto, shall continue to be eligible to represent that country even if he is no longer qualified to do so under the amended terms of this Rule.

**g) Wheelchair Tennis Eligibility**  
Classification and General Eligibility

In order to be eligible to play wheelchair tennis, players must meet certain criteria, as set out in Rule IV, 2.

Medical and Fitness Control

All players entering ITF Draws at ITF sanctioned wheelchair tennis events, including the Wheelchair Tennis Tour, the World Team Cup and the Paralympic Games agree, as a condition of entry, to the Tennis Anti-Doping Programme and Fitness Control.

Wheelchair Tennis is a physically demanding sport and it is the player's responsibility to ensure that he is physically and medically fit to participate in any ITF sanctioned wheelchair tennis event, including the Wheelchair Tennis Tour, the World Team Cup and the Paralympic Games.

In case there is any doubt, the Referee may request a medical certificate confirming that the player is medically and physically fit to compete.

Quad Classification

Only Quad Players with E Status are allowed to compete in the World Team Cup. Players who have been protested shall be entitled to continue playing pending the decision of the Wheelchair Tennis Medical Commission on the protest.

**h) Captains' Meeting**

A Captains' Meeting shall be held on the day prior to the commencement of the Competition. All Captains must sign in at the Captains' Meeting in order for their teams to be included in the draw. Any member nation not attending this meeting will receive a fine of US \$ 50.

**i) Waiver of Claims**

Member Nations entering the Competition agree, as a condition of entry, that no claims may be brought against the Federation or the Host Nation with respect to cancellation, any injuries, however caused, or any losses incurred, if any, while travelling to and from, or participating in the Competition.

**56. DRAWS AND SEEDING**

**a) Entry**

A maximum of thirty-two (32) men's teams in two World Groups, sixteen (16) women's teams, eight (8) quad teams and eight (8) junior's teams shall compete in the Main Draw of the Competition.

The entry criteria for competing countries for 2011 will be as follows:-

**Men**

- The top twenty-four (24) Nations from the previous year's World Team Cup will receive direct entry. World Group 1 (WG1) will consist of the top 12 nations from the previous year and the winners of the relegation matches between nations 13 & 14 of WG1 versus nations 4 & 3 of World Group 2 (WG2) respectively, plus the winner and runner up of WG2. WG2 will be made up of the losers of the above relegation matches, nations 15 & 16 of WG1 and nations 5-8 of World Group 2 from the previous year. Any withdrawals from direct entries into WG1 or WG2 will be replaced by countries at the discretion of the ITF Wheelchair Tennis Committee.
- A further eight (8) Nations will receive entry to WG2 through a Wild Card 2 per world region plus 2 extra (to be allocated at the discretion of the ITF Wheelchair Tennis Committee).

**Women**

- The top thirteen (13) Nations of the previous year's World Team Cup will receive direct entry.
- Three (3) Nations will receive entry through a Wild Card (to be allocated at the discretion of the ITF Wheelchair Tennis Committee).

**Quads**

- The top six (6) Nations from the previous year's World Team Cup will receive direct entry.
- A further two (2) Nations will receive entry through a Wild Card (to be allocated at the discretion of the ITF Wheelchair Tennis Committee).

### **Juniors under 18**

- The top four (4) Nations from the previous year's World Team Cup will receive direct entry.
- A further four (4) Nations will receive entry through a Wild Card (to be allocated at the discretion of the ITF Wheelchair Tennis Committee).

### **b) The Draw**

The Draw shall be made one (1) day before the commencement of the Competition. Once the Draw has been made, there can be no change, unless a player from a seeded team withdraws prior to the commencement of the Competition and this adversely affects the seeding, in which case, the Referee may request the Committee to adjust the seeding or to make the Draw again.

### **c) Seeding**

#### **Main Draw**

Seeded Nations shall be selected by the Referee based on the latest available ITF Wheelchair Tennis Ranking of the two (2) most highly ranked singles players in each team. In the event of the combined rankings being equal, the ITF Wheelchair Tennis Manager, the Referee and the Tournament Director shall decide. The ITF Junior ranking will be one of the most important factors in the seeding of the junior event and it will be approved by the ITF Wheelchair Tennis Committee.

#### **Men**

In the sixteen (16) team draws, eight (8) may be seeded in WG1 and WG2 and positioned as follows:

- Number 1 shall be placed on line 1; number 2 on line 16.
- Numbers 3 and 4 shall be drawn by lot. The first drawn shall be placed on line 5; the second drawn on line 12.
- Numbers 5 and 6 shall be drawn by lot. The first drawn shall be placed on line 8; the second drawn on line 9.
- Numbers 7 and 8 shall be drawn by lot. The first drawn shall be placed on line 4; the second drawn on line 13.

#### **Women**

In the sixteen (16) team draw, eight (8) may be seeded and positioned as follows:

- Number 1 shall be placed on line 1; number 2 on line 16.
- Numbers 3 and 4 shall be drawn by lot. The first drawn shall be placed on line 5; the second drawn on line 12.

- Numbers 5 and 6 shall be drawn by lot. The first drawn shall be placed on line 8; the second drawn on line 9.
- Numbers 7 and 8 shall be drawn by lot. The first drawn shall be placed on line 4; the second drawn on line 13.

### **Quads**

In the eight (8) team Main Draw, two (2) may be seeded and positioned as follows:

- Number 1 shall be placed in pool 1; number 2 shall be placed in pool 2.

By draw will be decided if seeds 3 and 4 will go in pool 1 or 2. The same procedure will be repeated for seeds 5 and 6, and seeds 7 and 8.

In the case of a seven (7) (or less) round robin draw, two (2) may be seeded and positioned as follows:

- Number 1 shall be placed in pool 1; number 2 shall be placed in pool 2.

By draw will be decided if seeds 3 and 4 will go in pool 1 or 2. The same procedure will be repeated for seeds 5 and 6. By draw will be decided in which pool seed 7 will be placed.

### **Juniors**

In the eight (8) team Main Draw, two (2) may be seeded and positioned as follows:

- Number 1 shall be placed in pool 1; number 2 shall be placed in pool 2.

By draw will be decided if seeds 3 and 4 will go in pool 1 or 2. The same procedure will be repeated for seeds 5 and 6, and seeds 7 and 8.

#### **d) Byes**

If there are any byes they shall be given to those Nations competing in the preliminary round of the competition.

## **57. BONUS POINTS**

Bonus points will be awarded at the World Team Cup. The bonus points will be the same as those awarded at ITF 1 events. Round points will not apply.

## **58. CONDUCT OF THE COMPETITION**

### **a) Composition of Matches**

Each match shall consist of two (2) singles and one (1) doubles and shall be played on the same court except as provided in Regulation 6(d).

**b) Order of Play**

The order of play shall be as follows:

Number 2 v Number 2

Number 1 v Number 1

Followed by the doubles match

When a result has been obtained after the singles matches the doubles match shall still be played to obtain the full score except in the case of exceptional circumstances when the ITF Wheelchair Tennis Manager, the Tournament Director and the Referee, may waive this requirement by unanimous vote. The format of the doubles match shall be a deciding 10-point Match tie-break. This tie-break replaces the deciding third set.

There will be a deciding 10-point Match tie-break replacing the deciding third set for all matches in the Junior and Men's World Group 2 division.

**c) Interval between Singles and Doubles**

The interval between singles matches shall be decided by the Referee. There shall be an interval of thirty (30) minutes between the singles and doubles matches unless otherwise decided by the Referee. For Quad matches there shall be an interval of forty-five (45) minutes between the singles and doubles matches.

**d) Relocation of Doubles Match**

The Referee has the discretion to transfer a doubles match to another court.

**e) Notification of Singles Players**

The Referee shall decide the time by which the Captains shall notify the names of the two (2) singles players.

**f) Notification of Doubles Players**

Any two (2) members of the team may play any of the doubles matches and the Captain must give their names to the Referee at least twenty (20) minutes before the doubles match starts.

**g) Substitutions**

In the event that the player is unable to play the match due to illness, injury or bereavement following notification of the name to the Referee, a substitution may be made by the Captain from the final nominated team providing that the player's case is legitimate and the Referee authorises such a substitution. In all cases, the Referee's decision to grant or not to grant substitution shall be final.

A player who does not start their singles match (having been nominated), or who starts their singles match but has to retire due to medical condition, may be allowed to play in the doubles match of the same tie at the discretion of the Referee and the Medical Doctor.

**h) Entitlement to Rest**

If a player is called upon to play more than one (1) round in one (1) day, the Referee shall decide the entitlement to rest.

**i) Eligibility to Sit on Court**

The Captain of a team, or other member of the team deputizing for the Captain, may sit on the court.

**j) Medical Conditions Rule**

The Medical Conditions Rule shall apply (see Appendix C of the Wheelchair Tennis Rules and Regulations).

**k) Eligibility to Play**

Only players present at the event and signed in at the Captains' Meeting by their Captains are eligible to play. No medically unfit player will be allowed to be part of the team. If there is any doubt, the Referee may request a medical certificate confirming that the player is medically and physically fit to compete.

**l) Tie-Break Scoring System**

The ITF tie-break scoring system shall operate in all sets when the score reaches six (6) games all.

**m) Method of determining places in the Round Robin**

Each tie will consist of three matches, two singles and one doubles. The Nation which wins the majority of the matches in the Tie shall be declared the winner, and shall be awarded one point.

- If two Nations score an equal number of points, the head-to-head result between these Nations shall decide the winner
- If three or more Nations score an equal number of points the following procedure shall be used:
  - The number of matches won shall decide the winner
  - If matches won are equal, the percentage of sets won of sets played against all teams in the pool shall decide the winner
  - If percentage of sets won are equal, the percentage of games won of the games played

against all teams in the pool shall decide the winner.

- When three or more Nations are tied head-to-head results are never used to determine the position in the Group.

If any match is stopped and not completed for reasons of injury, etc., the full score shall be recorded. Example: Player A leads over Player B by 6-1, 2-0 when player B is injured and unable to continue. Player A's victory shall be recorded as 6-1, 6-0.

If a match is a walk-over the score shall be recorded as 6-0, 6-0.

**n) Court Officials**

There must be a Chair Umpire for every match.

**o) Captains, Player Representatives and Player Relatives**

No captain, representative or relative of a player may at any time, particularly during a tournament or an event into which the player's entry has been accepted, conduct himself in a manner that will reflect unfavorably on the ITF, its tournaments, any player, official or the game of tennis.

Abusive conduct, including conduct directed toward any player, tournament on-court official or spectator, shall be considered a violation of this Rule.

Violations will result in (i) denial of privileges or exclusion of such person from any or all ITF sanctioned wheelchair tennis tournaments; or (ii) such other sanctions as the ITF Wheelchair Tennis Committee may decide to impose.

**59. CONDITIONS OF PLAY**

Please see Section 36, "Conditions of Play", with the exception of 36c and k of the Wheelchair Tennis Rules and Regulations

**60. PENALTIES**

**a) Team Changes, Withdrawals and No Shows**

- i. Teams whose entries have been accepted shall not be able to withdraw without risk of penalty.
- ii. Team withdrawals after the first entry deadline are subject to penalty in the following order determined by the date of the withdrawal:

- A withdrawal within 2 weeks of the competition will be subject to a fine of US\$500 and possible suspension for the following year's event.
  - A withdrawal after team nomination (second entry deadline) and over two weeks prior to the competition will be subject to a fine of US\$250 and possible suspension for the following year's event.
  - A withdrawal after the first entry deadline and before team nomination (second entry deadline) will be subject to a fine of US\$100.
- iii. In the event that any country does not attend and sign in at the Captains' Meeting prior to the Tournament and have not completed an exempt form for attendance, they risk being taken out of the draw and/or receiving a fine.
  - iv. In the event of any 'no-show' by a team, the penalty shall be the forfeit of all entry fees and possible suspension for the following year's event.
  - v. A 'no show' by a team and/or player for the opening ceremony, the draw, official dinner and prize ceremonies, will be treated as 'unsportsmanlike conduct' and will be dealt with under Section XIII 'Code of Conduct' of the Wheelchair Tennis Rules and Regulations.
  - vi. The ITF Wheelchair Tennis Committee shall make all decisions and interpretations concerning the Regulations. Any appeal against the decision or interpretation of the ITF Wheelchair Tennis Committee shall be referred to the Board of Directors whose decision shall be final and binding on all parties. Any appeal shall be in writing and shall be received by the Company not later than one month after the decision has been received by the Protestor. The Board of Directors shall conduct any appeal in whatever manner they deem to be appropriate.
  - vii. In the event a team does not complete the competition, the penalty shall be \$1000.
- b) **Code of Conduct**  
Each team member of each nation that enters and/or participates in the competition shall be bound by and shall comply with the provisions of the Code of Conduct set out in Section XIII of the Wheelchair Tennis Rules and Regulations.
- c) **Welfare Policy**  
Any player that enters and/or participates in the competition, and any Player Support Team Members of any players that enters and/or participates in the competition shall be bound by and shall comply with

the provisions of the Welfare Policy set out in Appendix E of the Wheelchair Tennis Rules and Regulations.

**d) Default in Payment**

Any default in payment in respect of their team's participation in a previous Competition, shall render that Member Nation liable to have its entry refused for any future Competitions until such payment has been made in full. The ITF Board of Directors shall be the final arbiters in any dispute, and shall decide any appeals.

**e) Medical Control**

National Associations entering the competition and those players nominated to compete on their behalf, agree as a condition of entry, to the following:

(a) Anti-Doping policy

Random doping control tests may be conducted during the competition in accordance with the ITF Tennis Anti-doping programme.

(b) If any player following completion of the procedures, including appeal, set forth in the 2011 ITF Tennis Anti-Doping Programme is found to have committed a Doping Offence no match result shall be re-assessed except in the case of the Final where such player's wins (if any) will be reversed. This may result in the team which originally lost the Final being declared the Champion Nation. Such player will be subject to penalties laid down in the 2011 ITF Tennis Anti-Doping Programme.

**f) Failure to Abide by the Regulations**

Any competing Nation who fails to conform to the Regulations may be immediately disqualified and/or shall be liable to have their entry refused for future Competitions until assurances of compliance with the Regulations are given, and subject to any further penalties set out in these Regulations. For offences which do not justify disqualification, the ITF Wheelchair Tennis Committee may decide that a fine be imposed.

## **61. ARBITRATION**

### **Settlement of On-Site Disputes**

The Referee shall decide any on-site disputes or interpretation in accordance with the Rules of Tennis. He shall also be the final arbiter for penalties imposed under the Code of Conduct unless the Code provides for an appeal to the Federation for that offence.

## **62. ENFORCEMENT OF THE REGULATIONS**

The above Regulations shall be binding on all Nations eligible to compete. The ITF Board of Directors may supersede these Regulations in extraordinary circumstances and may delegate this responsibility to the ITF Wheelchair Tennis Manager, Referee and Tournament Director on site.

# **XIII. CODE OF CONDUCT FOR WHEELCHAIR TENNIS**

## **63. PURPOSE**

The International Tennis Federation promulgates this Code of Conduct (Code) in order to maintain fair and reasonable standards of conduct by players and the organisers of ITF sanctioned wheelchair tennis events and to protect their respective rights, the rights of the public and the integrity of the Sport of Tennis. All references to the International Tennis Federation or the ITF shall mean the ITF Limited.

## **64. EXCLUSIVE APPLICABILITY**

### **a) To Players and Tournaments**

The 2011 Code of Conduct for Wheelchair Tennis shall be the exclusive basis for disciplinary action against any player or tournament in ITF sanctioned Wheelchair Tennis Events.

### **b) To Players Undergoing the Classification Process**

All players to be classified according to the ITF wheelchair tennis eligibility regulations, shall co-operate fully and act in good faith during the entirety of the classification process.

## **65. UNITED STATES DOLLARS**

All monetary fines set forth in the Code are in USD, US Dollars.

## **66. PLAYER ENTRY OFFENCES**

### **a) Entries and withdrawals**

All players shall abide by the rules for entries and withdrawals set forth in these Regulations.

### **b) Late withdrawals/No shows**

Any player who is committed to play in an ITF sanctioned wheelchair tennis event following the appropriate withdrawal deadlines, but withdraws without a “valid reason” after the withdrawal deadline or is a no show will be penalised.

As “valid reasons” the following will be considered:

- Medical excuse

- Family bereavement or other force majeure reasons as certified to and accepted by the ITF

Late Withdrawals/No Shows are subject to automatic fines up to \$200.

In circumstances that are flagrant and particularly injurious to the success of an ITF sanctioned wheelchair tennis event, or are singularly egregious, a single violation of this Section shall also constitute the Major Offence of “Aggravated Behaviour”.

A player, who signs in by phone and does not appear for a tournament, may be fined up to \$250.

**c) Playing in another event**

A player who has entered and been accepted into an ITF sanctioned wheelchair tennis event shall not play in any other tennis event during the period of such tournament unless authorised by the ITF. Violation of this Section shall result in a fine up to \$200 in addition to any other fines provided in the Code.

In circumstances that are flagrant and particularly injurious to the success of an ITF sanctioned wheelchair tennis event, or are singularly egregious, a single violation of this Section shall also constitute the Major Offence of “Aggravated Behaviour”.

**d) Wild cards**

No player, directly or indirectly, shall offer, give, solicit, receive or accept, or agree to offer, give, solicit, receive or accept anything of value in exchange for a Wild Card. Violation of this section by a player shall result in a fine of up to \$500.

In circumstances that are flagrant and particularly injurious to the tournament, or are singularly egregious, a single violation of this Section shall also constitute the Major Offence of “Aggravated Behaviour”.

**e) Determination and penalty**

The ITF shall cause an investigation to be made to determine the facts regarding all Entry Offences and upon determining that a violation has occurred shall specify the fine and/or other punishment therefore and where possible notify the player.

**f) Payment of fines**

All fines levied for entry offences shall be paid by the player within ten (10) days after the notice thereof is provided. Unpaid fines may also be

collected at ITF events for remission to the ITF. A player who has outstanding fines at the end of the calendar year may not be allowed to enter and/or play in any ITF sanctioned wheelchair tennis event until such time as all fines have been paid.

**g) Appeals**

Any player convicted of a violation of a Player Entry Offence may, after paying all fines, appeal to the ITF Wheelchair Tennis Manager, for review of the determination of guilt and penalty therefore. Such Notice of Appeal shall be in writing and filed by 5.00 p.m. G.M.T. with the ITF within ten (10) days of receipt of the official notification.

Attached to and included with such Notice of Appeal shall be a statement by the player as to the facts and circumstances of such incident along with any other evidence that the player desires to submit. Any player submitting fax transmission receipts when appealing a Player Entry Offence should note that all fax receipts must match exactly the fax receipt records at the ITF Office; i.e. fax transmission receipts submitted must show the originating fax number, the fax number of the ITF Office, the OK status, the number of pages transmitted, the date, the time and the transmission duration. If there is no exact match with the transmission receipt records at the ITF Office the appeal will be rejected as insufficient evidence submitted.

Upon receipt of such an Appeal, the ITF Wheelchair Tennis Manager shall conduct a reasonable investigation of the facts and circumstances surrounding such incident, and shall affirm or reverse in whole or in part the determination of the Offence. In the event of a whole or partial reversal the ITF shall remit to the player all or part of the fines collected in accordance with the disposition of the appeal.

Should a player submit documentation that the ITF deems to be false evidence a fine may be levied as herein provided for under Section 66 above.

**67. PLAYER ON-SITE OFFENCES**

**a) General**

Every player shall, during all matches and at all times while within the precincts of the site of an ITF Tournament or World Team Cup conduct himself in a professional manner. The provisions hereinafter set forth shall apply to each player's conduct while within the precincts of each such site.

**b) Punctuality**

Matches shall follow each other without delay in accordance with the announced order of play. The order of play shall be posted at a highly visible place in a general players' area as designated by the Referee.

Matches shall be called in accordance with the order of play using all available and reasonable means. Players shall be ready to play when their matches are called.

**i.** Any player not ready to play within ten (10) minutes after his match is called may be fined \$50.

**ii.** Any player not ready to play within fifteen (15) minutes after his match is called may be fined up to an additional \$100 and shall be defaulted unless the Referee in his sole discretion, after consideration of all relevant circumstances, elects not to declare a default.

**c) Dress and Equipment**

Every player shall dress and present himself for play in a professional manner. Clean and customarily acceptable tennis attire shall be worn (including tennis shoes on feet) in all matched and award ceremonies.

Any player who violates this Section may be ordered by the Chair Umpire or Referee to change his attire or equipment immediately. Failure of a player to comply with such order may result in an immediate default. (The ITF reserves the right to interpret the following rules so as to give effect to the intent and purposes of these Regulations)

At the Grand Slams, the Grand Slams clothing regulations will apply.

**i. Unacceptable Attire**

Sweatshirts, gym shorts, dress shirts, T-shirts or any other inappropriate attire shall not be worn during a match (including the warm-up).

**ii. Identifications on Clothing and Equipment**

No identification shall be permitted on a player's clothing, products or equipment on court before, during and after a match or at any press conference or tournament ceremony, except as follows (the ITF reserves the right to interpret the following rules so as to give effect to the intent and purposes of these Rules):

**(a) Shirts, Sweaters or Jackets**

Sleeves: One (1) commercial (non-manufacturer's) identification for each sleeve, neither of which exceeds three (3) square inches (19.5 sq.cm), plus one (1)

manufacturer's identification on each sleeve, neither of which exceeds eight (8) square inches (52 sq.cm) shall be permitted. If written identification is used within this eight (8) square inches (52 sq.cm) area on either or both sleeves, such written identification may not exceed four (4) square inches (26 sq.cm) per sleeve.

Sleeveless: The two (2) commercial (non-manufacturer's) identifications permitted on the sleeves above, neither of which shall exceed three (3) square inches (19.5 sq.cm), may be placed on the front of the garment.

Front, Back and Collar: One (1) commercial (non-manufacturer's) identification which does not exceed three (3) square inches (19.5 sq.cm), plus two (2) manufacturer's identifications, neither of which exceeds two (2) square inches (13 sq.cm) or one (1) manufacturer's identification, which does not exceed four (4) square inches (26 sq.cm) shall be permitted.

- (b) Shorts, Skirts or Track Suit bottoms  
Two (2) manufacturer's identifications, neither of which exceeds two (2) square inches (13 sq.cm) or one (1) manufacturer's identification which does not exceed four (4) square inches (26 sq.cm) shall be permitted.
- (c) Dresses  
A dress, for the purposes of permissible identification, shall be treated as a combination of a skirt and shirt (dividing dress at waist).
- (d) Socks and shoes  
Manufacturer's identifications on each sock and on each shoe shall be permitted. The identifications on the sock(s) on each foot shall be limited to a maximum of two (2) square inches (13 sq.cm).
- (e) Racquet  
Manufacturer's identifications on racquet and strings shall be permitted.
- (f) Hat, Headband or Wristband  
One (1) manufacturer's identification or one (1) commercial identification, neither of which shall exceed three (3) square inches (19.5 sq.cm) shall be permitted.
- (g) Bags, Other Equipment or Paraphernalia  
Tennis equipment manufacturer's identifications on each item plus two (2) separate commercial identifications on one (1) bag, neither of which exceeds four (4) square inches (26 sq.cm) shall be permitted.

- (h) Wheelchair: Sports & Day Chairs  
A maximum of three (3) commercial identifications of which each identification shall not exceed thirty-six (36) square inches (232 sq.cm) in total. A further five (5) manufacturer's identifications are permitted on a wheelchair.
- (i) Other products  
Only products of the tournament's sponsors or of a non-conflicting nature to these sponsors may be given visible identification on court. In the event that competitive products are required for a player's use on court, these must either be contained in plain packaging or in the case of a drink product, taken from a plain bottle or the cups provided by the official drinks supplier.
- (j) Another Tennis, Sport or Entertainment Event  
Notwithstanding anything to the contrary hereinabove set forth the identification by use of the name, emblem, logo, trademark, symbol or other description of any tennis circuit, series of tennis events, tennis exhibition, tennis tournament, any other sport or entertainment event other than relating to the Wheelchair Tennis Tour is prohibited on all dress or equipment.
- (k) General  
In the event the utilisation of any of the foregoing permitted commercial identifications would violate any governmental Regulation with respect to television, then the same shall be prohibited.
- (l) Quad assistance  
Any person to assist a quad player on-court to drop the ball to serve or assist the player to cool down must conform to the above clothing regulations.

For the purposes of this Rule, the manufacturer means the manufacturer of the clothing or equipment in question.

In addition, the size limitation shall be ascertained by determining the area of the actual patch or other addition to a player's clothing without regard to the colour of the same. In determining area, depending on the shape of the patch or other addition, a circle, triangle or rectangle shall be drawn around the same and the size of the patch for the purpose of this Rule shall be the area within the circumference of the circle or the perimeter of the triangle or rectangle as the case may be. When a solid colour patch is the same colour as the clothing, then in determining the

area, the size of the actual patch will be based on the size of the identification.

**iii. Warm-up Clothing**

Players may wear warm-up clothing during the warm-up and during a match provided it complies with the foregoing provisions and provided further that the players obtain approval of the Referee prior to wearing warm-up clothing during a match.

**iv. Taping**

No taping over of logos/patches shall be allowed.

**v. Fines**

Any player who violates this Section and is not defaulted shall be subject to the following fines:

- (a) Unacceptable Attire  
Violation of the provisions with respect to Unacceptable Attire shall result in a fine of up to \$250;
- (b) Manufacturer's Identification  
Violation of the provisions with respect to manufacturer's identifications shall result in a fine of up to \$250;
- (c) Commercial Identification  
Violation of the provisions with respect to commercial identifications shall result in a fine of up to \$250;
- (d) Another Tennis Event  
Violation of the provisions with respect to the name of an event shall result in a fine of up to \$250.

**d) Time Violation/Delay of Game**

Following the expiration of the warm-up period play shall be continuous and a player shall not unreasonably delay a match for any cause.

A maximum of twenty (20) seconds shall elapse from the moment the ball goes out of play at the end of the point until the time the ball is struck for the first serve of the next point. If such serve is a fault then the second serve must be struck by the server without delay.

When changing ends a maximum of ninety (90) seconds shall elapse from the moment the ball goes out of play at the end of the game until the time the first serve is struck for the next game. If such first serve is a fault the second serve must be struck by the server without delay. However, after the first game of each set and during a tie-break, play shall be continuous and the players shall change ends without a rest period.

At the conclusion of each set, regardless of the score, there shall be a set break of one hundred and twenty (120) seconds from the moment the ball goes out of play at the end of the set until the time the first serve is struck for the next set.

If a set ends after an even number of games, there shall be no change of ends until after the first game of the next set.

The receiver shall play to the reasonable pace of the server and shall be ready to receive within a reasonable time of the server being ready.

The first violation of this Section shall be penalised by a Time Violation warning and each subsequent violation shall be penalised by the assessment of one Time Violation point penalty.

When a violation is a result of a medical condition, refusal to play or not returning to the court within the allowed time a Code Violation (Delay of Game) penalty shall be assessed in accordance with the Point Penalty Schedule.

**e) Audible Obscenity (AOB)**

Players shall not use audible obscenity within the precinct of the tournament site. Violation of this Section shall subject a player to a fine up to \$250 for each violation. In addition, if such violation occurs during a match (including the warm-up), the player shall be penalized in accordance with the Point Penalty Schedule hereinafter set forth. In circumstances that are flagrant and particularly injurious to the success of a tournament, or are singularly egregious, a single violation of this Section shall also constitute the Major Offence of “Aggravated Behaviour” and shall be subject to the additional penalties hereinafter set forth therefore.

For the purposes of this Rule, audible obscenity is defined as the use of words commonly known and understood to be profane and uttered clearly and loudly enough to be heard by the Court Officials or spectators.

**f) Visible Obscenity (VOB)**

Players shall not make obscene gestures of any kind within the precincts of the tournament site. Violation of this Section shall subject a player to a fine up to \$250 for each violation. In addition, if such violation occurs during a match (including the warm-up), the player shall be penalised in accordance with the Point Penalty Schedule hereinafter set forth. In circumstances that are flagrant and particularly injurious to the success of a tournament, or are singularly egregious, a single violation of this Section shall also constitute the Major Offence of “Aggravated

Behaviour” and shall be subject to the additional penalties hereinafter set forth therefore.

For the purposes of this Rule, visible obscenity is defined as the making of signs by a player with his hands and/or racquet or balls that commonly have an obscene meaning.

**g) Verbal Abuse (VA)**

Players shall not at any time directly or indirectly verbally abuse any official, opponent, sponsor, spectator or other person within the precincts of the tournament site.

Violation of this Section shall subject a player to a fine up to \$250 for each violation. In addition, if such violation occurs during a match (including the warm-up), the player shall be penalised in accordance with the Point Penalty Schedule hereinafter set forth. In circumstances that are flagrant and particularly injurious to the success of a tournament, or are singularly egregious, a single violation of this Section shall also constitute the Major Offence of “Aggravated Behaviour” and shall be subject to the additional penalties hereinafter set forth therefore.

For the purposes of this Rule, verbal abuse is defined as a statement about an official, opponent, sponsor, spectator or other person that implies dishonesty or is derogatory, insulting or otherwise abusive.

**h) Physical Abuse (PhA)**

Players shall not at any time physically abuse any official, opponent, spectator or other person within the precincts of the tournament site.

Violation of this Section shall subject a player to a fine up to \$250 for each violation. In addition, if such violation occurs during a match (including the warm-up), the player shall be penalised in accordance with the Point Penalty Schedule hereinafter set forth. In circumstances that are flagrant and particularly injurious to the success of a tournament, or are singularly egregious, a single violation of this Section shall also constitute the Major Offence of “Aggravated Behaviour” and shall be subject to the additional penalties hereinafter set forth therefore.

For the purposes of this Rule, physical abuse is the unauthorised touching of an official, opponent, spectator or other person.

**i) Abuse Of Balls (BA)**

Players shall not violently, dangerously or with anger hit, kick or throw a tennis ball within the precincts of the tournament site except in the reasonable pursuit of a point during a match (including the warm-up).

Violation of this Section shall subject a player to a fine up to \$250 for each violation. In addition, if such violation occurs during a match (including the warm-up), the player shall be penalised in accordance with the Point Penalty Schedule hereinafter set forth.

For the purposes of this Rule, abuse of balls is defined as intentionally hitting a ball out of the enclosure of the court, hitting a ball dangerously or recklessly within the court or hitting a ball with negligent disregard of the consequences.

**j) Abuse of Racquets or Equipment (RA)**

Players shall not violently or with anger hit, kick or throw a racquet or other equipment within the precincts of the tournament site. Violation of this Section shall subject a player to a fine up to \$250 for each violation. In addition, if such violation occurs during a match (including the warm-up), the player shall be penalised in accordance with the Point Penalty Schedule hereinafter set forth.

For the purposes of this Rule, abuse of racquets or equipment is defined as intentionally and violently destroying or damaging racquets or equipment or intentionally and violently hitting the net, court, umpire's chair or other fixture during a match out of anger or frustration.

**k) Coaching and Coaches (CC)**

Players shall not receive coaching during a match. Communications of any kind, audible or visible, between a player and a coach may be construed as coaching. Players shall also prohibit their coaches (1) from using audible obscenity within the precincts of the tournament site, (2) from making obscene gestures of any kind within the precincts of the tournament site, (3) from verbally abusing any official, opponent, spectator or other person within the precincts of the tournament site, (4) from physically abusing any official, opponent, spectator or other person within the precincts of the tournament site and (5) from giving, making, issuing, authorising or endorsing any public statement within the precincts of the tournament site having, or designed to have, an effect prejudicial or detrimental to the best interest of the tournament and/or of the officiating thereof.

Violation of this Section shall subject a player to a fine up to \$250 for each violation. In addition, if such violation occurs during a match (including the warm-up), the player shall be penalised in accordance with the Point Penalty Schedule hereinafter set forth. In circumstances that are flagrant and particularly injurious to the success of a tournament, or are singularly egregious, a single violation of the section shall also constitute

the major offence of “Aggravated Behaviour” and shall be subject to the additional penalties hereinafter set forth therefore and the Referee may order the Coach to be removed from the site of a match or the precincts of the tournament site and upon his failure to comply with such order may declare an immediate default of such player.

For the purposes of this Rule, a “coach” shall also include any representatives and/or relative of a player.

**l) Unsportsmanlike Conduct (UnC)**

Players shall at all times conduct themselves in a sportsmanlike manner and give due regard to the authority of officials and the rights of opponents, spectators and others. Violation of this Section shall subject a player to a fine up to \$250 for each violation. In addition, if such violation occurs during a match (including the warm-up), the player shall be penalised in accordance with the Point Penalty Schedule hereinafter set forth. In circumstances that are flagrant and particularly injurious to the success of a tournament, or are singularly egregious, a single violation of this Section shall also constitute the Major Offence of “Aggravated Behaviour” and shall be subject to the additional penalties hereinafter set forth therefore.

For the purposes of this Rule, unsportsmanlike conduct is defined as any misconduct by a player that is clearly abusive or detrimental to the Sport, but that does not fall within the prohibition of any specific on-site offence contained herein. In addition, unsportsmanlike conduct shall include, but not be limited to, the giving, making, issuing, authorising or endorsing any public statement having, or designed to have, an effect prejudicial or detrimental to the best interests of the tournament and/or the officiating thereof.

**m) Best Efforts (BE)**

A player shall use his best efforts to win a match when competing in an ITF sanctioned wheelchair tennis tournament. Violation of this section shall subject a player to a fine up to \$250 for each violation.

For purposes of this Rule, the Referee and/or the Chair Umpire shall have the authority to penalise a player in accordance with the Point Penalty Schedule. In circumstances that are flagrant and particularly injurious to the success of a tournament, or are singularly egregious, a single violation of this Section shall also constitute the Major Offence of “Aggravated Behaviour” and shall be subject to the additional penalties hereinafter set forth therefore.

**n) Leaving the Court (LC)**

A player shall not leave the court area during a match (including the warm-up) without the permission of the Chair Umpire. Violation of this Section shall subject a player to a fine up to \$250 for each violation. In addition the player may be defaulted and subjected to the additional penalties for Failure to Complete Match as hereinafter set forth.

**o) Failure to Complete Match (FCM)**

A player must complete a match in progress unless he is reasonably unable to do so. Violation of this Section shall subject a player to a fine up to \$250. In addition a violation of this Section shall subject a player to immediate default and shall also constitute the Major Offence of “Aggravated Behaviour” and shall be subject to the additional penalties hereinafter set forth therefore.

**p) Ceremonies (Cer)**

A player participating in the finals of an ITF sanctioned wheelchair tennis event must attend and participate in the final ceremonies after the match unless he is reasonably unable to do so. Violation of this Section shall subject a player to a fine up to \$250.

**q) Media Conference (MC)**

Unless injured and physically unable to appear, a player or team must attend the post-match media conference(s) organised immediately or within thirty (30) minutes after the conclusion of each match whether the player or team was the winner or loser, unless such time is extended or otherwise modified by the Referee for good cause. Violation of this Section shall subject a player to a fine up to \$250.

**r) Point Penalty Schedule**

The Point Penalty Schedule to be used for violations set forth above is as follows:

FIRST offence	WARNING
SECOND offence	POINT PENALTY
THIRD and each subsequent offence	GAME PENALTY

However, after the third Code Violation, the Referee shall determine whether each subsequent offence shall constitute a default.

**s) Defaults**

The Referee may declare a default for either a single violation of this Code (Immediate Default) or pursuant to the Point Penalty Schedule set out above.

In all cases of default, the decision of the Referee shall be final and unappealable.

Any player who is defaulted as herein provided shall lose all ranking points earned for that event at that tournament and may be fined up to the prize money won at the tournament in addition to any or all other fines levied with respect to the offending incident. In addition, any player who is defaulted as herein provided may be defaulted from all other events, if any, in that tournament except when the offending incident involves only a violation of the Punctuality or Dress and Equipment provisions set forth in Section 35 b and c, or as a result of a medical condition or when his doubles partner commits the Code Violation which causes the default.

**t) Doubles Events**

**i. Warnings/Point Penalties/Game Penalties/Defaults**

Warnings, Point Penalties, Game Penalties and/or a default if assessed for violation of the Code shall be assessed against the team.

**ii. Fines**

All fines for violation of Section 34 of the Code shall be assessed only against the individual member of the team who is in violation unless both members of the team are in violation.

**u) Determination and Penalty**

The ITF Wheelchair Tennis Manager shall make such investigation as is reasonable to determine the facts regarding all Player On-Site Offences and upon determining that a violation has occurred, shall specify the fine and/or other punishment and give written notice thereof to the player.

**v) Payment of fines**

Any unpaid fines may also be collected at other ITF sanctioned wheelchair tennis events for remission to the ITF. A player who has accumulated \$500 or more in unpaid fines for violations of this Code of Conduct may not be allowed to play in any ITF sanctioned wheelchair tennis event until such time as all fines have been paid. A player who has outstanding fines at the end of the calendar year may not be allowed to play in any ITF sanctioned wheelchair tennis events until such time as all fines have been paid.

**w) Appeals**

Any player convicted of a violation of a Player On-Site Offence at an ITF sanctioned wheelchair tennis event may, after paying all fines, appeal to

the ITF Wheelchair Tennis Manager for review of the determination of guilt and penalty therefore. Such Notice of Appeal shall be in writing and filed within ten (10) days of receipt of the official notification.

Attached to and included with such Notice of Appeal shall be a statement by the player as to the facts and circumstances of such incident along with any other evidence that the player desires to submit.

Upon receipt of such an Appeal, the ITF Wheelchair Tennis Manager shall conduct a reasonable investigation of the facts and circumstances surrounding such incident and shall affirm or reverse in whole or in part the determination of the Referee. In the event of a whole or partial reversal the Tournament Administrator shall remit to the player all or part of the fines collected in accordance with the disposition of the appeal.

## **68. UNIFORM TENNIS ANTI-CORRUPTION PROGRAM**

### **A. Introduction**

The purpose of the Uniform Tennis Anti-Corruption Program is to (i) maintain the integrity of tennis, (ii) protect against any efforts to impact improperly the results of any match and (iii) establish a uniform rule and consistent scheme of enforcement and sanctions applicable to all professional tennis Events and to all Governing Bodies.

### **B. Definitions**

1. "AHO" refers to an Anti-Corruption Hearing Officer.
2. "ATP" refers to the ATP Tour, Inc.
3. "CAS" refers to the Court of Arbitration for Sport.
4. "Consideration" refers to anything of value except for money.
5. "Corruption Offense" refers to any offense described in Section D or E of this Program.
6. "Covered Person" refers to any Player, Related Person, or Tournament Support Personnel.
7. "Decision" refers to a decision of an AHO regarding the commission of a Corruption Offense.

8. "Demand" refers to a written demand for information issued by the TIU to any Covered Person.
9. "Director" refers to the Director of the TIU.
10. "Event" refers to all professional tennis matches and other tennis competitions, whether men's or women's, including, without limitation, all tournaments organized, sanctioned or recognized by any of the Governing Bodies.
11. "Governing Bodies" refers to the ATP, the ITF, the WTA and the GSC.
12. "GSC" refers to the Grand Slam Committee.
13. "Hearing" refers to a hearing before an AHO in accordance with Section G of this Program.
14. "Information in the public domain" refers to information which has been published or is a matter of public record or can be readily acquired by an interested member of the public and/or information which has been disclosed according to the rules or regulations governing a particular event.
15. "Inside Information" refers to information about the likely participation or likely performance of a Player in an Event or concerning the weather, court conditions, status, outcome or any other aspect of an Event which is known by a Covered Person and is not information in the public domain.
16. "ITF" refers to the International Tennis Federation.
17. "Notice" refers to written Notice sent by the PTIO to a Covered Person alleged to have committed a Corruption Offense.
18. "Player" refers to any player who enters or participates in any competition, Event or activity organized or sanctioned by any Governing Body.
19. "Program" refers to this Uniform Tennis Anti-Corruption Program.
20. "PTIO" refers to the Professional Tennis Integrity Officer appointed by each Governing Body.
21. "Related Person" refers to any coach, trainer, therapist, physician, management representative, agent, family member, tournament guest,

business associate or other affiliate or associate of any Player, or any other person who receives accreditation at an Event at the request of the Player or any other Related Person.

22. “TIB” refers to the Tennis Integrity Board.
23. “TIU” refers to the Tennis Integrity Unit.
24. “Tournament Support Personnel” refers to any tournament director, owner, operator, employee, agent, contractor or any similarly situated person at any Event and any other person who receives accreditation at an Event at the request of Tournament Support Personnel.
25. “Wager” refers to a wager of money or Consideration or any other form of financial speculation.
26. “WTA” refers to the WTA Tour, Inc.

#### **C. Covered Players, Persons and Events**

1. All Players, Related Persons, and Tournament Support Personnel shall be bound by and shall comply with all of the provisions of this Program and shall be deemed to accept all terms set out herein.
2. It is the responsibility of each Player, Related Person and Tournament Support Personnel to acquaint himself or herself with all of the provisions of this Program. Further, each Player shall have a duty to inform Related Persons with whom they are connected of all of the provisions of this Program and shall instruct Related Persons to comply with the Program.

#### **D. Offenses**

Commission of any offense set forth in Section D or E of this Program including a violation of the Reporting Obligations or any other violation of the provisions of this Program shall constitute a Corruption Offense for all purposes of this Program.

##### **1. Corruption Offenses.**

- a. No Covered Person shall, directly or indirectly, wager or attempt to wager on the outcome or any other aspect of any Event or any other tennis competition.

- b. No Covered Person shall, directly or indirectly, solicit or facilitate any other person to wager on the outcome or any other aspect of any Event or any other tennis competition.
- c. No Covered Person shall, directly or indirectly, solicit or accept any money, benefit or Consideration for the provision of an accreditation to an Event (i) for the purpose of facilitating a commission of a Corruption Offense; or (ii) which leads, directly or indirectly, to the commission of a Corruption Offense.
- d. No Covered Person shall, directly or indirectly, contrive or attempt to contrive the outcome or any other aspect of any Event.
- e. No Covered Person shall, directly or indirectly, solicit or facilitate any Player to not use his or her best efforts in any Event.
- f. No Covered Person shall, directly or indirectly, solicit or accept any money, benefit or Consideration with the intention of negatively influencing a Player's best efforts in any Event.
- g. No Covered Person shall, directly or indirectly, offer or provide any money, benefit or Consideration to any other Covered Person with the intention of negatively influencing a Player's best efforts in any Event.
- h. No Covered Person shall, directly or indirectly, solicit or accept any money, benefit or Consideration, for the provision of any Inside Information.
- i. No Covered Person shall, directly or indirectly, offer or provide any money, benefit or Consideration to any other Covered Person for the provision of any Inside Information.
- j. No Covered Person shall, directly or indirectly, offer or provide any money, benefit or Consideration to any Tournament Support Personnel in exchange for any information or benefit relating to a tournament.

## **2. Reporting Obligation.**

### **a. Players.**

- i. In the event any Player is approached by any person who offers or provides any type of money, benefit or

Consideration to a Player to (i) influence the outcome or any other aspect of any Event, or (ii) provide Inside Information, it shall be the Player's obligation to report such incident to the TIU as soon as possible.

- ii. In the event any Player knows or suspects that any other Covered Person or other individual has committed a Corruption Offense, it shall be the Player's obligation to report such knowledge or suspicion to the TIU as soon as possible.
- iii. If any Player knows or suspects that any Covered Person has been involved in an incident described in Section D.2.b. below, a Player shall be obligated to report such knowledge or suspicion to the TIU as soon as possible.
- iv. A Player shall have a continuing obligation to report any new knowledge or suspicion regarding any Corruption Offense, even if the Player's prior knowledge or suspicion has already been reported.

**b. Related Persons and Tournament Support Personnel.**

- i. In the event any Related Person or Tournament Support Person is approached by any person who offers or provides any type of money, benefit or Consideration to a Related Person or Tournament Support Person to (i) influence or attempt to influence the outcome of any aspect of any Event, or (ii) provide Inside Information, it shall be the Related Person's or Tournament Support Person's obligation to report such incident to the TIU as soon as possible.
  - ii. In the event any Related Person or Tournament Support Person knows or suspects that any Covered Person or other individual has committed a Corruption Offense, it shall be the Related Person's or Tournament Support Person's obligation to report such knowledge or suspicion to the TIU as soon as possible.
- c. For the avoidance of doubt, a failure of the Reporting Obligation by any Covered Person shall constitute a Corruption Offense for all purposes of the Program.**

**E. Additional Matters**

1. Each Player shall be responsible for any Corruption Offense committed by any Covered Person if such Player either (i) had knowledge of a Corruption Offense and failed to report such knowledge pursuant to the reporting obligations set forth in Section D.2. above or (ii) assisted the commission of a Corruption Offense. In such event, the AHO shall have the right to impose sanctions on the Player to the same extent as if the Player had committed the Corruption Offense.
2. For a Corruption Offense to be committed, it is sufficient that an offer or solicitation was made, regardless of whether any money, benefit or Consideration was actually paid or received.
3. Evidence of a Player's lack of efforts or poor performance during an Event may be offered to support allegations that a Covered Person committed a Corruption Offense, but the absence of such evidence shall not preclude a Covered Person from being sanctioned for a Corruption Offense.
4. A valid defense may be made to a charge of a Corruption Offense if the person alleged to have committed the Corruption Offense (a) promptly reports such conduct to the TIU and (b) demonstrates that such conduct was the result of an honest and reasonable belief that there was a significant threat to the life or safety of such person or any member of such person's family.

**F. Investigation and Procedure**

1. **Anti-Corruption Hearing Officer.**
  - a. The TIB shall appoint one or more independent AHOs, who shall be responsible for (i) determining whether Corruption Offenses have been committed, and (ii) fixing the sanctions for any Corruption Offense found to have been committed.
  - b. An AHO shall serve a term of two years, which may thereafter be renewed in the discretion of the TIB. If an AHO becomes unable to serve, a new AHO may be appointed for a full two-year term pursuant to this provision.

## 2. Investigations.

- a. The TIU shall have the right to conduct an initial interview and follow-up interviews, if necessary as determined solely by the TIU, with any Covered Person in furtherance of investigating the possibility of a commission of a Corruption Offense.
  - i. The date and time of all interviews shall be determined by the TIU, giving reasonable allowances for Covered Persons' tournament and travel schedules.
  - ii. The Covered Person shall have the right to have counsel attend the interview(s).
  - iii. The interview shall be recorded. The recorded interviews shall be used for transcription and evidentiary purposes and thereafter shall be retained by the TIU for a minimum of 3 years in a secure place.
  - iv. The Covered Person shall have the right to request an interpreter, and the cost shall be borne by the TIU.
  - v. Transcripts of the interview shall be provided to the Covered Person, upon request, within a reasonable period of time following the conclusion of the interview.
- b. All Covered Persons must cooperate fully with investigations conducted by the TIU. No Covered Person shall tamper with or destroy any evidence or other information related to any Corruption Offense.
- c. If the TIU believes that a Covered Person may have committed a Corruption Offense, the TIU may make a Demand to any Covered Person to furnish to the TIU any information regarding the alleged Corruption Offense, including, without limitation, (i) records relating to the alleged Corruption Offense (including, without limitation, itemized telephone billing statements, text of SMS messages received and sent, banking statements, Internet service records, computers, hard drives and other electronic information storage devices), and (ii) a written statement setting forth the facts and circumstances with respect to the alleged Corruption Offense. The Covered Person shall furnish such information within seven business days of the making of such Demand, or within such other time as may be set by the TIU. Any information furnished to the

TIU shall be (i) kept confidential except when it becomes necessary to disclose such information in furtherance of the prosecution of a Corruption Offense, or when such information is reported to administrative, professional, or judicial authorities pursuant to an investigation or prosecution of non sporting laws or regulations and (ii) used solely for the purposes of the investigation and prosecution of a Corruption Offense.

- d. By participating in any Event, or accepting accreditation at any Event, a Covered Person contractually agrees to waive and forfeit any rights, defenses, and privileges provided by any law in any jurisdiction to withhold information requested by the TIU or the AHO. If a Covered Person fails to produce such information, the AHO may rule a Player ineligible to compete, and deny a Covered Person credentials and access to Events, pending compliance with the Demand.
- e. If a PTIO concludes that a Corruption Offense may have been committed, the PTIO shall refer the matter and send the evidence to the AHO, and the matter shall proceed to a Hearing before the AHO in accordance with Section G of this Program.

**3.** Each Covered Person shall be determined to be immediately contactable at the most current postal address provided to a Governing Body. Any Notice delivered hereunder to a Covered Person at such address, shall be deemed to have been received by the Covered Person on date of delivery to such address in the confirmation of delivery provided by the courier service company. At its discretion, as an alternative to or in conjunction with the courier delivery, any other method of secure and confidential communication may be used, including, but not limited to hand delivery, facsimile or e-mail, provided that the burden of proving receipt via such alternative methods shall be on the sending party.

## **G. Due Process**

### **1. Commencement of Proceedings.**

- a. When the PTIO refers a matter to the AHO pursuant to Section F.2.e, the PTIO shall send a Notice to each Covered Person alleged to have committed a Corruption Offense, with a copy to the AHO, setting out the following:
  - i. the Corruption Offense(s) alleged to have been committed, including the specific Section(s) of this Program alleged to have been infringed;

- ii. the facts upon which such allegations are based;
  - iii. the potential sanctions prescribed under this Program for such Corruption Offense(s); and
  - iv. the Covered Person's entitlement to have the matter determined by the AHO at a Hearing.
- b. The Notice shall also specify that, if the Covered Person wishes to dispute the PTIO's allegations, the Covered Person must submit a written request to the AHO for a Hearing so that it is received as soon as possible, but in any event within fourteen business days of the date of the receipt of Notice as defined in Article F.3.
- c. A Covered Person shall direct any response to a Notice to the AHO with a copy to the PTIO and may respond in one of the following ways:
- i. To admit the Corruption Offense and accede to the imposition of sanctions, in which case no hearing shall be conducted and the AHO shall promptly issue a Decision confirming the commission of the Corruption Offense(s) alleged in the Notice and ordering the imposition of sanctions, which shall be determined by the AHO after requesting and giving due consideration to a written submission from the PTIO on the recommended sanction.
  - ii. To deny the Corruption Offense and to have the AHO determine the charge, and if the charge is upheld, the sanctions, at a hearing conducted in accordance with Section G.2.
  - iii. To admit that he or she has committed the Corruption Offense(s) specified in the Notice, but to dispute and/or seek to mitigate the sanctions specified in the Notice. Either a request for hearing or a written submission solely on the issue of the sanction must be submitted simultaneously with the Covered Person's response to the Notice. If a hearing is requested, it shall be conducted in accordance with Section G.2. If no hearing is requested, the AHO shall promptly issue a Decision confirming the commission of the Corruption Offense(s) specified in the Notice and ordering the imposition of sanctions, after giving

due consideration to the Covered Person's written submission (if any) and any response submitted by the PTIO.

- d. If the Covered Person fails to file a written request for a hearing by the deadline set out in Section G. 1. b, he or she shall be deemed:
  - i. to have waived his or her entitlement to a hearing;
  - ii. to have admitted that he or she has committed the Corruption Offense(s) specified in the Notice;
  - iii. to have acceded to the potential sanctions specified in the Notice; and,
  - iv. the AHO shall promptly issue a Decision confirming the commission of the Corruption Offense(s) alleged in the Notice and ordering the imposition of sanctions, (after requesting and giving due consideration to a written submission from the PTIO on the recommended sanction).
- e. If, for any reason, the AHO is or becomes unwilling or unable to hear the case, then the AHO may request that the TIP appoint a substitute or successor AHO for such matter in accordance with Section F. 1.
- f. In the event a Covered Person requests a hearing under Section G.1.c.ii or G.2.c.iii, thereafter, but no more than twenty business days after the date of the Notice or request for Hearing if received, the AHO shall convene a meeting or telephone conference with the PTIO and/or its legal representatives, the Covered Person to whom the Notice was sent and his or her legal representatives (if any), to take jurisdiction formally over the matter and to address any pre-Hearing issues. The non-attendance of the Covered Person or his or her representatives at the meeting, after proper notice of the meeting has been provided, shall not prevent the AHO from proceeding with the meeting in the absence of the Covered Person, whether or not any written submissions are made on behalf of the Covered Person. In the meeting the AHO shall:
  - i. determine the date(s) (which must be at least twenty business days after the meeting, unless the parties consent to a shorter period) upon which the Hearing shall be held. Subject to the foregoing sentence, the Hearing shall be

commenced as soon as practicable after the Notice is sent, and ordinarily within sixty days of the date that the Covered Person requests a Hearing. The Hearing shall be completed expeditiously;

- ii.** establish dates reasonably in advance of the date of the Hearing at which:

  - 1.** the Covered Person shall submit a brief with argument on all issues that he or she wishes to raise at the Hearing;
  - 2.** the PTIO shall submit an answering brief, addressing the arguments of the Covered Person and setting out argument on the issues that the PTIO wishes to raise at the Hearing;
  - 3.** the Covered Person may submit a reply brief, responding to the PTIO's answer brief; and
  - 4.** the Covered Person and the PTIO shall exchange witness lists (with each witness's address, telephone number and a summary of the subject areas of the witness's anticipated testimony) and copies of the exhibits that they intend to introduce at the Hearing; and
- iii.** make such order as the AHO shall deem appropriate in relation to the production of relevant documents or other materials between the parties.
- g.** The AHO may, at any time prior to issuing a Decision, request that an additional investigation be conducted into any matter reasonably related to the alleged Corruption Offense. If the AHO requests such an additional investigation, the TIU shall conduct the investigation in accordance with the AHO's directions and shall report the findings of that investigation to the AHO and the Covered Person implicated in the alleged Corruption Offense at least ten days prior to the Hearing. If the Covered Person wishes to object to, or raise any issues in connection with, such additional investigation, he or she may do so by written submission to the AHO.

## **2. Conduct of Hearings.**

- a.** Hearings shall be conducted on a confidential basis. Unless the AHO orders otherwise for good cause shown by a party, each Hearing shall take place in either Miami, Florida, USA or London, England, as determined by the AHO.
- b.** The Covered Person shall have the right (i) to be present and to be heard at the Hearing and (ii) to be represented at the Hearing, at his or her expense, by legal counsel. The Covered Person may choose not to appear at the Hearing, but rather to provide a written submission for consideration by the AHO, in which case the AHO shall take such submission into account in making his or her Decision. However, the non-attendance of the Covered Person or his or her representative at the Hearing, after proper notice of the Hearing has been provided, shall not prevent the AHO from proceeding with the Hearing in his or her absence, whether or not any written submissions are made on his or her behalf.
- c.** The procedures followed at the Hearing shall be at the discretion of the AHO, provided that the Hearing shall be conducted in a fair manner with a reasonable opportunity for each party to present evidence (including the right to call and to question witnesses), address the AHO and present his, her or its case.
- d.** The PTIO shall make arrangements to have the Hearing recorded or transcribed at the PTIO's expense. If requested by the Covered Person, the PTIO shall also arrange for an interpreter to attend the Hearing, at the PTIO's expense.

## **3. Burdens and Standards of Proof.**

- a.** The PTIO (which may be represented by legal counsel at the Hearing) shall have the burden of establishing that a Corruption Offense has been committed. The standard of proof shall be whether the PTIO has established the commission of the alleged Corruption Offense by a preponderance of the evidence.
- b.** Where this Program places the burden of proof upon the Covered Person alleged to have committed a Corruption Offense to rebut a presumption or establish facts or circumstances, the standard of proof shall be by a preponderance of the evidence.
- c.** The AHO shall not be bound by any jurisdiction's judicial rules governing the admissibility of evidence. Instead, facts relating to a Corruption

Offense may be established by any reliable means, as determined in the sole discretion of the AHO.

**4. Decisions.**

- a.** Once the parties have made their submissions, the AHO shall determine whether a Corruption Offense has been committed. Where Section H of this Program specifies a range of possible sanctions for the Corruption Offense found to have been committed, the AHO shall also fix the sanction within that range, after considering any submissions on the subject that the parties may wish to make.
- b.** The AHO shall issue a Decision in writing as soon as possible after the conclusion of the Hearing. Such Decision will be sent to the parties and shall set out and explain:
  - i.** the AHO's findings as to what Corruption Offenses, if any, have been committed;
  - ii.** the sanctions applicable, if any, as a result of such findings; and
  - iii.** the rights of appeal applicable pursuant to Section I of this Program.
- c.** The TIU shall pay all costs and expenses of the AHO and of staging the Hearing. The AHO shall not have the power to award costs or make any costs order against a Covered Person or the PTIO. Each party shall bear its own costs, legal, expert and otherwise.
- d.** Subject only to the rights of appeal under Section I of this Program, the AHO's Decision shall be the full, final and complete disposition of the matter and will be binding on all parties. If the AHO determines that a Corruption Offense has been committed, the TIB will publicly report the Decision.

**H. Sanctions**

- 1.** The penalty for any Corruption Offense shall be determined by the AHO in accordance with the procedures set forth in Section G, and may include:
  - a.** With respect to any Player, (i) a fine of up to \$250,000 plus an amount equal to the value of any winnings or other amounts received by such Covered Person in connection with any



the special provisions applicable to the Appeal Arbitration Proceedings, by either the Covered Person who is the subject of the Decision being appealed, or the TIB.

2. Any Decision appealed to CAS shall remain in effect while under appeal unless CAS orders otherwise.
3. The deadline for filing an appeal with CAS shall be twenty business days from the date of receipt of the Decision by the appealing party.
4. The decision of CAS shall be final, non-reviewable, non-appealable and enforceable. No claim, arbitration, lawsuit or litigation concerning the dispute shall be brought in any other court or tribunal.

#### **J. Conditions of Reinstatement**

1. Once a Covered Person's period of ineligibility or suspension has expired and the Covered Person has paid all fines and/or prize money forfeitures, the Covered Person will become automatically eligible and no application by the Covered Person for reinstatement will be necessary.
2. All fines and/or prize money forfeitures imposed on players hereunder must be paid within thirty (30) days following the later of the receipt of an AHO decision or, if appealed to CAS, the receipt of the CAS decision. If not paid within the prescribed timeframe, the player shall be ineligible for participation in any event organized or sanctioned by any Governing Body until such time as the fine and/or prize money forfeitures have been paid in full. The AHO and the PTIO shall have the discretion to establish an instalment plan for payment of any fines and/or prize money forfeitures. For the avoidance of doubt, the schedule of payments pursuant to such plan may extend beyond any period of ineligibility; however, a default in payment under such plan shall automatically trigger a period of ineligibility until such default is cured.

#### **K. General**

1. No action may be commenced under this Program against any Covered Person for any Corruption Offense unless such action is commenced within either (i) eight years from the date that the Corruption Offense allegedly occurred or (ii) two years after the discovery of such alleged Corruption Offense, whichever is later.
2. Section headings within this Program are for the purpose of guidance only and do not form part of the Program itself. Nor do they inform or affect the language of the provisions to which they refer.

3. This Program shall be governed in all respects (including, but not limited to, matters concerning the arbitrability of disputes) by the laws of the State of Florida, without reference to conflict of laws principles.
4. In the event any provision of this Program is determined invalid or unenforceable, the remaining provisions shall not be affected. This Program shall not fail because any part of this Program is held invalid.
5. Except as otherwise stated herein, failure to exercise or enforce any right conferred by the Program shall not be deemed to be a waiver of any such right nor operate so as to bar the exercise or enforcement thereof or of any other right on any other occasion.
6. This Program is applicable prospectively to Corruption Offenses occurring on or after the date that this Program becomes effective. Corruption Offenses occurring before the effective date of this Program are governed by the former rules of the Governing Bodies which were applicable on the date that such Corruption Offense occurred.
7. Except as otherwise agreed to by the parties, all filings, Decisions, Hearings and appeals shall be issued or conducted in English.

## 69. PLAYER MAJOR OFFENCES

### a) **Aggravated Behaviour**

No player or related person at any ITF sanctioned wheelchair tennis event shall engage in “Aggravated Behaviour” which is defined as follows:-

- i. One or more incidents of behaviour designated in this Code as constituting “Aggravated Behaviour”;
- ii. One incident of behaviour that is flagrant and particularly injurious to the success of an ITF sanctioned wheelchair tennis event, or is singularly egregious;
- iii. A series of two (2) or more violations of this Code within a twelve (12) month period which singularly do not constitute “Aggravated Behaviour”, but when viewed together establish a pattern of conduct that is collectively egregious and is detrimental or injurious to ITF sanctioned wheelchair tennis events.

In addition, any player or related person, who, directly or indirectly, offers or provides or receives any money, benefit or consideration to or

from any other covered person or third party in exchange for access and/or accreditation to the tournament site shall be deemed to have engaged in aggravated behavior and be in violation of this section.

Violation of this Section by a player, directly or indirectly through a related person or others, shall subject a player to a fine of up to \$1,000 or the amount of prize money won at the tournament, whichever is greater, and a maximum penalty or permanent suspension from play in all ITF sanctioned wheelchair tennis events.

Violation of this section shall subject a related person to a maximum penalty of permanent revocation of accreditation and denial of access to all ITF sanctioned Wheelchair Tennis events.

**b) Conduct contrary to the Integrity of the Game**

No player or related person shall engage in conduct contrary to the integrity of the Game of Tennis. If a player is convicted of the violation of a criminal or civil law of any country, he may be deemed by virtue of such conviction to have engaged in conduct contrary to the integrity of the Game of Tennis and the ITF Executive Director may provisionally suspend such a player from further participation in ITF sanctioned events pending a final determination in section c). In addition, if a player has at any time behaved in a manner severely damaging to the reputation of the sport, he may be deemed by virtue of such behaviour to have engaged in conduct contrary to the integrity of the Game of Tennis and be in violation of this Section.

Violation of this Section by a player, directly or indirectly through a related person or others, shall subject a player to a fine up to \$1,000 and/or to a maximum penalty or permanent suspension from play in all ITF sanctioned wheelchair tennis events.

Violation of this section shall subject a related person to a maximum penalty of permanent revocation of accreditation and denial of access to all ITF sanctioned Wheelchair Tennis events.

**c) Determination and Penalty**

The ITF Wheelchair Tennis Manager shall cause an investigation to be made of all facts concerning any alleged Major Offence and shall provide written notice of such investigation to the player involved; the player shall be given at least ten (10) days to provide to the ITF Wheelchair Tennis Manager, directly or through counsel, such evidence as the player deems to be relevant to the investigation. Upon the completion of his investigation the ITF Wheelchair Tennis Manager shall determine the innocence or guilt of the player involved, and, in the latter case, shall state

in writing the facts as found by him, his conclusions and his decision fixing the penalty to be imposed. A copy of the decision shall be promptly delivered to the player and to the Committee.

**d) Payment of fines**

All fines levied by the ITF Wheelchair Tennis Manager for Player Major Offences shall be paid by the player to the ITF within thirty (30) days after receipt of written notice thereof. If the fine is not paid in thirty (30) days the ITF Wheelchair Tennis Manager will instruct the next ITF sanctioned wheelchair tennis event to withhold prize money due to the player until settlement is made.

**e) Discretionary Review**

Any player found to have committed a Player Major Offence may, after paying all fines as above provided, petition the Committee for discretionary review of the determination and penalty of the ITF Wheelchair Tennis Manager. The petition shall be in writing and must be filed with the ITF Wheelchair Tennis Manager within thirty (30) days after notice of the violation is mailed to the player. The ITF Wheelchair Tennis Manager shall thereafter promptly forward said petition to the Committee. Said petition shall state in detail the basis for such appeal. Within thirty (30) days thereafter the Committee shall designate a time and place for the hearing of such appeal and shall so notify the player and the ITF Wheelchair Tennis Manager. At such hearing the player and the ITF Wheelchair Tennis Manager shall present to the Committee the relevant evidence on the matter. The Committee may affirm, reverse, or modify the decision of the ITF Wheelchair Tennis Manager on appeal.

If the appeal is decided against the player, then the Committee shall tax the reasonable costs of the appeal against the player, which costs shall include, but not be limited to, the reasonable travel and living expenses incurred by all witnesses and members of the Committee with respect thereto, if the same is not at a regularly scheduled meeting of the Committee.

## **70. MEDICAL CONTROL – ANTI-DOPING POLICY**

Any Player, Player Support Personnel or other Person who enters or participates in the ITF Wheelchair Circuit or any Wheelchair event shall be bound by and shall comply with all of the provisions of the ITF Tennis Anti-Doping Programme 2011.

The ITF Tennis Anti-Doping Programme 2011 is set out in full on the ITF website ([www.itftennis.com/antidoping](http://www.itftennis.com/antidoping)) and in a separate rulebook that is

published and distributed by the ITF to all National Associations. The ITF Tennis Anti-Doping Programme 2011 is also available upon application.

## **71. WELFARE POLICY**

Any player that enters and/or participates in the Wheelchair Tennis Circuit or any Wheelchair event, and any Player Support Team Members of any players that enters and/or participates in the Wheelchair Tennis Circuit or any Wheelchair event shall be bound by and shall comply with the provisions of the Welfare Policy set out in Appendix E.

## **72. TOURNAMENT OFFENCES**

### **a) Applicability**

This Article shall apply to each ITF sanctioned wheelchair tennis event.

### **b) Guarantees**

The owner(s), operator(s), sponsor(s) or agent(s) of an ITF sanctioned wheelchair tennis event shall not offer, give or pay money or anything of value, nor shall such a tournament permit any other person or entity to offer, give or pay money or anything of value to a player, directly or indirectly, to influence or guarantee a player's appearance at a tournament other than prize money and permitted amateur expenses, unless authorised to do so by the Committee. Violation of this Section shall subject the tournament to a fine up to \$1,000 plus the amount or value of any such payment, disqualification and loss of sanction, and/ or forfeiture of all sums, if any, previously paid to the ITF. In the event the ITF Wheelchair Tennis Manager believes that a tournament may be violating this Section, then upon demand the tournament must furnish or cause to be furnished to the ITF Wheelchair Tennis Manager or his agent access to and copies of all records to which it has access relating in any way to such alleged guarantee, or, in the absence of such records, an affidavit setting forth the facts in detail with respect to any transaction under question by the ITF Wheelchair Tennis Manager.

### **c) Wild cards**

No ITF sanctioned wheelchair tennis event, directly or indirectly, shall offer, give, solicit, receive or accept, or agree to offer, give, solicit, receive or accept anything of value in exchange for a Wild Card. Violation of this section shall subject the tournament to a fine of up to \$1,000 and/or forfeiture of all sums, if any, previously paid to the ITF. In such a situation, the tournament will also receive a fine of up to \$1,000 and possible withdrawal of its sanction.

**d) Conduct contrary to the integrity of the game**

No ITF sanctioned wheelchair tennis event, or any owner, promoter or operator thereof, shall engage in conduct contrary to the integrity of the Sport.

Violation of this Section shall subject the tournament to a fine up to \$1,000 and/or forfeiture of all sums, if any, previously paid to the ITF.

**e) ITF Wheelchair Tennis Rules**

No ITF sanctioned wheelchair tennis event shall violate any provisions of these ITF Wheelchair Tennis Rules. Violation of this Section shall subject the tournament to a fine up to \$1,000 and/or forfeiture of all sums, if any, previously paid to the ITF.

**f) Late cancellation**

No ITF sanctioned wheelchair tennis event shall cancel less than sixty (60) days prior to the scheduled commencement of the event.

Violation of this section shall subject the tournament to a fine, as outlined below, of up to \$1,000, forfeiture of all sums, if any, previously paid or due to the ITF, reimbursement of unrecoverable expenses incurred and/or denial of subsequent Applications.

Tournament Offenses

- Tournament organising committees cancelling a tournament in excess of 60 days prior to the start of the tournament will be fined as follows :-

Super series – up to \$ 2500

ITF level 1/2 – up to \$1000

ITF level 3 and Futures – up to \$500

- Tournament organising committees cancelling a tournament within 60 days prior to the start of the tournament will be fined as follows :-

Super series – up to \$5000

ITF level 1/2 – up to \$2500

ITF level 3 and Futures – up to \$1000

**g) Determination and penalty**

The ITF Wheelchair Tennis Manager shall cause an investigation to be made of all facts concerning any alleged Tournament Offence by an ITF sanctioned wheelchair tennis event and shall provide written notice of such investigation to the tournament involved. The tournament shall be given at least ten (10) days to provide to the ITF Wheelchair Tennis Manager, directly or through counsel, such evidence as the tournament deems to be relevant to the investigation. Upon completion of his

investigation, the ITF Wheelchair Tennis Manager shall determine the innocence or guilt of the tournament involved, and in the latter case shall state in writing the facts as found by him, his conclusions and his decision fixing the penalty to be imposed. A copy of the decision of the ITF Wheelchair Tennis Manager shall be promptly delivered to the tournament and to the Committee.

**h) Payment of fines**

All fines levied by the ITF Wheelchair Tennis Manager for Tournament Offences shall be paid by the tournament to the ITF within thirty (30) days after receipt of written notice thereof of the Committee with respect thereto, if the same is not at a regularly scheduled meeting of the Committee.

**i) Discretionary review**

Any ITF sanctioned wheelchair tennis event found to have committed a Tournament Offence may, after paying all fines as above provided, petition the Committee for discretionary review of the determination and penalty of the ITF Wheelchair Tennis Manager. The petition shall be in writing and must be filed with the ITF Wheelchair Tennis Manager within thirty (30) days after notice of the violation is mailed to the tournament. The ITF Wheelchair Tennis Manager shall there after promptly forward said petition to the Committee. Said petition shall state in detail the basis for such appeal. Within thirty (30) days thereafter the Committee shall designate a time and place for the hearing of such appeal and shall so notify the tournament and the ITF Wheelchair Tennis Manager. At such hearing the tournament and the ITF Wheelchair Tennis Manager shall present to the Committee the relevant evidence on the matter. The Committee may affirm, reverse, or modify the decision of the ITF Wheelchair Tennis Manager on appeal. If the appeal is decided against the tournament, then the Committee shall tax the reasonable costs of the appeal against the tournament, which costs shall include, but not be limited to, the reasonable travel and living expenses incurred by all witnesses and members.

**73. INTERPRETATIONS**

Any person or entity subject to this Code may file with the ITF Wheelchair Tennis Manager a request for an interpretation or clarification of the Code and/or its applicability and effect on a particular event or transaction.

#### 74. NOTICE

All written communications to the ITF Wheelchair Tennis Manager should be addressed as follows, unless notice of change is subsequently published:

Mr Mark Bullock - ITF Wheelchair Tennis Manager  
International Tennis Federation  
Bank Lane, Roehampton  
SW15 5XZ London - United Kingdom  
Tel: (44) 20 8878 6464 - Fax: (44) 20 8392 4741  
Email: [mark.bullock@itftennis.com](mailto:mark.bullock@itftennis.com)

**a) Player**

Notice that a player is being investigated pursuant to a possible Major Offence charge shall be served personally upon him. Service of any other document required by the Code shall be deemed complete if mailed to the subject player at his home address or other address designated by the player, along with a copy to any player association of which he is a member provided that the ITF Wheelchair Tennis Manager has notice of such membership.

**b) Tournament**

Service of any document on an ITF sanctioned wheelchair tennis event as required by this Code shall be deemed complete if mailed to the ITF Wheelchair Tennis Manager.

#### 75. AMENDMENTS

This ITF Wheelchair Tennis Code of Conduct may only be amended, repealed or otherwise modified, in whole or in part, by the ITF.

## **APPENDIX A**

### **I. ITF WHEELCHAIR TENNIS MEDICAL COMMISSION TERMS OF REFERENCE**

The ITF Wheelchair Tennis Medical Commission (Commission) has been established to serve a number of functions within the sport of wheelchair tennis including, but not limited to the resolution of eligibility matters. The Commission is made up of Medical doctors, a legal representative, a player representative(s) and other personnel experienced in wheelchair tennis. The terms of reference of the Commission are set out below:

1. To determine eligibility matters in accordance with the Rules of Wheelchair Tennis and/or to appoint classifiers to adjudicate quad eligibility.
2. To consider applications from players to register as a quad player and determine whether a player is eligible to play in the Quad Draw or whether a quad tennis classifier(s) should assess such player.
3. To provide advice, assistance and, where appropriate, make recommendations to the ITF on Anti-Doping Rules, policies and procedures in wheelchair tennis.
4. To provide advice on medical issues and, where appropriate, make recommendations to the ITF on medical issues.
5. To provide advice, assistance and, where appropriate, make recommendations to the ITF Wheelchair Tennis Committee on the Rules of Wheelchair Tennis and related matters.
6. To carry out such functions, including, but not limited to, reviewing proposed rule changes, as the ITF Wheelchair Tennis Committee and/or the ITF refer to the Commission from time to time.

### **II. GENERAL ELIGIBILITY**

- A.** All players with a medically diagnosed permanent mobility related physical disability as defined in IV.2.a) are eligible to compete in ITF sanctioned wheelchair tennis tournaments. Players must be prepared to present medical documentation that substantiates the disability.

### **B. GENERAL ELIGIBILITY CLASSIFICATION**

In cases where players may be uncertain over their eligibility status to play wheelchair tennis, they may request to the ITF Wheelchair Tennis Manager that

they be allowed to be classified. The manager shall have the discretion to determine whether such classifications should take place and if so, the location, timing and cost of such classification. If such classification is to take place, the player may be observed by an approved classifier(s) during practice, warm-up, play and/or at any time during the tournament stay. These observations by the classifier(s) may be supplemented by a review of the player's medical history and by a physical examination of the player. Based on the evidence of the classifier(s), the ITF Wheelchair Tennis Medical Commission will make a decision on the eligibility of the player.

For the avoidance of any doubt, save for quad eligibility and the exceptional circumstances as per above, the procedures for general eligibility remain self-certification.

### **III. QUAD DRAW**

#### **A. QUAD ELIGIBILITY**

It is recognized that fairness for competition necessitates a Quad Draw for wheelchair tennis. Adapting from the philosophy for classification in most of the other sports for persons with a disability, function and movement potential, in addition to minimal medical criteria, now form the basis for determining the criteria for the Quad Draw as defined in IV 2. b, c. The function and movement potential criteria are those specific for wheelchair tennis. It is also understood that medical conditions other than spinal cord injury may result in upper extremity impairment, and may allow a player to be eligible for the Quad Draw if the functional criteria set out in the Rules are met. The 'Quad' Draw may not be encompassing of all quadriplegic athletes. For avoidance of doubt, some quadriplegic athletes will be deemed eligible and some ineligible, under the criteria stipulated for quad tennis (please see Section IV, Eligibility Rules).

#### **B. QUAD CLASSIFICATION**

##### **1. NEW QUAD PLAYERS**

Players applying for quad status may apply to register throughout the year but such applications must be received at least three (3) months prior to the event they wish to enter. Quad registration forms are available through the ITF, the players' member nation, and the ITF website. Fully completed forms will be examined by members of the Commission, who, will ordinarily advise the player within six (6) weeks if the player is eligible provisionally for quad tennis (P status). The player will therefore be able to compete in a maximum of four tournaments on the NEC Wheelchair Tennis Tour (this includes only one ITF 1 event and no World Team Cup, Paralympics, Super Series and Grand Slams) within any 12 month period. If a player with a P status wishes to compete in further ITF sanctioned tournaments, he must attend for classification.

## 2. **CLASSIFICATION**

Subject to paragraph B1 above, in order to ascertain whether a player is eligible to play wheelchair tennis in the Quad Draw, the player will be observed by an approved classifier(s) during practice, warm-up, play and/or at any time during the tournament stay and will be assessed on a points system as laid down in the ITF Quad Tennis Classification Manual. These observations by the classifier(s) may be supplemented by a review of the player's medical history and by a physical examination of the player to provide further information to assist in deciding whether the player is eligible to play in the Quad Draw. Training and experience do not affect movement potential and so do not have any bearing on the eligibility of the player.

## 3. **ELIGIBILITY CODES**

Following a classification, players will be informed of their classification score and subsequent eligibility status. The status will be one of the following:

### **E Eligible**

Players with the E status have been classified as eligible to play quad wheelchair tennis. This status would remain unless the classification criteria are reviewed and/or there is a need for re-classification (e.g. protest).

### **R Review**

A player with this code is under classification review. The classifiers have been unable to reach a definite decision following the initial assessment. The player can compete but will remain under observation. The R status will expire 12 months after the player is given this status or before that time if the player has been reviewed as ineligible/eligible. It is the responsibility of the player to ensure that he attends another classification event and/or arrange classification before the 12 month period lapses. The R code may only be given once for the maximum length of 12 months.

### **P Provisional**

Upon receipt of the quad registration form with the fully completed paperwork, the Commission will decide if the player will receive the provisional status, which will allow him to compete in a maximum of 4 NEC Tour events (Futures Series, ITF 3 and 2 Series, and only one ITF 1 event). No player should have more than four events on their ranking at any time. However, a player assigned the P status may be required to attend classification at any time prior to this if this is deemed necessary.

P and R Status players are not eligible to play in the World Team Cup, Paralympics and any Super Series or Grand Slam events.

## **U     Unclassifiable**

Classifiers have been unable to classify the player. The testing process may not have been completed or was made impossible due to pain, spasticity or lack of co-operation from the player. This player will be given an unclassifiable status and deemed ineligible to compete in the Quad Draw.

## **C.     PROTESTS**

### **1.     PROTEST PARTIES**

Only the following parties are entitled to protest the eligibility of a quad wheelchair tennis player:

- a) A quad player (against the classification status assigned to him)
- b) An ITF/ IWTA (International Wheelchair Tennis Association) Member Nation (through its general secretary)
- c) The ITF Wheelchair Tennis Committee.

### **2.     FIRST PROTEST (COMMISSION)**

- a) All parties presenting a protest will have to inform the ITF in writing within two weeks of being classified out and will be required to pay a fee, as determined from time to time, to the ITF to cover administration costs. If the protest is successful, this fee will then be returned.
- b) Protests to the status of a quad wheelchair tennis player shall, ordinarily, be considered by a minimum of three members of the Commission. Decisions regarding the validity or lack thereof of any protest must be made with both physicians in agreement and by majority vote.
- c) Procedure
  - i) For a protest to be valid, a protest form must be completed and be submitted to the ITF Office. The written protest must state the name and country of the quad wheelchair tennis player whose eligibility is protested and give reasons for the protest.
  - ii) On receipt of such a protest, the matter will be referred to the Commission which shall deal with the referral in the manner it considers appropriate in the circumstances. The procedure adopted in relation to any protest shall be at the discretion of the Commission. The Commission is not bound by judicial rules governing the procedure or admissibility of evidence provided that the quad wheelchair tennis player protested is informed of the basis of the protest and given a reasonable opportunity to answer the protest and present his case.
  - iii) The Commission may request that the party submitting the protest provide evidence and/or such additional information as the Commission believes is required in order to adjudicate on the protest. This may include, but shall not be limited to, objective written medical evidence of permanent physical disability and/or the protested quad wheelchair tennis player's pertinent medical records, including pertinent diagnostic studies. Any request for

information, assistance and/or evidence must be complied with within a reasonable time limit as directed by the Commission.

- A failure on the part of the party making the protest to comply with a request for assistance, information or evidence upon which the protest is based within the time period designated by the Commission shall invalidate the protest.
  - A failure on the part of the protested quad wheelchair tennis player protested to submit evidence or information and/or provide assistance within the time designated by the Commission shall result in the suspension of that player until such time as the evidence, information and/or assistance is provided.
- iv) The Commission may either:
- Accept the original classification or;
  - Request that the quad wheelchair tennis player be subject to a further classification by one or more classifiers or;
  - Take such other action as it considers appropriate to deal justly with the case in question.
- v) Costs incurred by a quad wheelchair tennis player subject to a protest in obtaining medical or any other evidence and/or providing information and/or assistance to the Commission in relation to a protest shall, ordinarily, be borne by that player. However, the Commission may require that the body protesting the quad wheelchair tennis player meet the reasonable costs necessarily incurred by the player in responding to the protest (either in whole or in part).
- vi) If appropriate, a quad wheelchair tennis player, deemed ineligible but who has been protested against that status shall not be entitled to play pending the outcome of the protest. A quad wheelchair tennis player who has been classified eligible shall be entitled to play pending the outcome of the protest.
- vii) The ITF Wheelchair Tennis Manager shall communicate the Commission's decision to the player protested and, if appropriate, the body making the protest as soon as reasonably practicable following the decision. The decision shall be binding on notification to the player protested.
- viii) If the Commission decides that a quad wheelchair tennis player does not satisfy the eligibility criteria then that player shall immediately be ineligible to play in wheelchair tennis events. If the Commission decides that a quad wheelchair tennis player is eligible to compete then that player's eligibility may only be further protested to the Protest Panel.
- ix) If a player participates in an ITF sanctioned wheelchair tennis event while his eligibility is, pursuant to the procedures in Appendix A under protest and, subsequently that player is found by the Commission to be ineligible to play wheelchair tennis, no match results shall be re-assessed, except in the case of the final where such player's win(s), if any, will be reversed.

This may result in the player who originally lost the final being declared the Champion Nation or the Champion Player.

- x) In communicating its decision, the Commission shall confirm the quad wheelchair tennis player's entitlement to protest to the Protest Panel. The body making the protest shall also be entitled to protest. The procedures are set out in section 3 below.

### **3. SECOND PROTEST (PROTEST PANEL)**

- a) All parties presenting a protest will be required to pay a fee, as determined from time to time, to the ITF to cover administration costs. If the protest is successful, this fee will then be returned.
- b) Procedure
  - i) To be valid, a written notice of protest must be submitted to the Wheelchair Tennis Manager of the ITF. The written protest must specify the name of the Protestor, the decision protested against, the date of the decision protested against and the specific grounds of the protest.
  - ii) Protest Panel Members shall be appointed by the ITF Wheelchair Tennis Committee and shall not include any members of the Commission. The Protest Panel shall, ordinarily, be comprised of a senior legal practitioner who shall act as Chairman, a medical doctor and a health care practitioner knowledgeable in classification systems for wheelchair athletes.
  - iii) The Chairman of the Protest Panel shall have the power to regulate the procedures on a protest provided that the Protestor and other relevant bodies are given a fair opportunity to submit their case(s).
  - iv) The Chairman of the Protest Panel shall determine the basis upon which any protest will proceed. The Protest Panel may, however, in its discretion, hear the whole or any part of the evidence considered by the Commission. The Protest Panel will have full discretionary power to hear and receive such further evidence, as it thinks fit. The Protest Panel may also request that the quad wheelchair tennis player undergo a medical evaluation by an independent medical specialist for the purpose of providing a report for the consideration of the Protests Panel. There is no obligation for the Protest Panel to meet when arriving at its decision.
  - v) If the Protest Panel considers that a hearing is required in order to adjudicate on a protest, then the Protestor is entitled to be present. The non-attendance of the Protestor (or any other party/witness) will not prevent the Protest Panel from proceeding and adjudicating on the protest.
  - vi) Any Protest Panel hearing shall ordinarily be held in private and shall be confidential.
  - vii) The Protest Panel shall only be entitled to consider the procedure applied in a particular player's case. It shall not be entitled to make a decision contrary to that of the classifier(s) and/or Commission as the case may be, but it may:

- In circumstances where it considers that on the balance of probabilities that the relevant procedures have not been properly applied, require that the player concerned be subject to a further classification or;
  - Order such other steps that it considers appropriate to deal justly with the case in question.
- viii) The costs incurred in any protests proceedings and/or those costs incurred in the collation of evidence or obtaining additional information relevant to a protest may be ordered at the discretion of the Protest Panel. Decisions of the Protest Panel shall be taken by majority.
- ix) The decision of the Protest Panel shall be communicated to the Protestor and if relevant, to the body making the protest and any other relevant parties as soon as reasonably practicable following the adjudication. The decision shall be final and binding upon notification to the Protestor.
- x) When a player has been found by the Commission to be ineligible to play in the Quad Draw and the player or the body who originally submitted the protest then protests against the decision, pending the determination of the player's protest by the Protest Panel, the player shall not be eligible to play in any ITF sanctioned Quad Draws (as applicable).
- xi) If, after the protest, the quad wheelchair tennis player is deemed ineligible to compete, then that players' eligibility may not, save in exceptional circumstances, be reconsidered for a further 3 years, provided that there is no relevant amendment to the relevant eligibility rules (subject to section II D below).

#### **4. CLASSIFICATION PROTEST DEADLINE FOR THE 2012 PARALYMPIC TENNIS EVENT**

The ITF Wheelchair Tennis Committee has established the deadline for protests by member nations against a player's minimum eligibility or status to compete in the quad division prior to the 2012 Paralympic tennis event in London. The deadline will be the 1<sup>st</sup> September 2011. The ITF will not permit any protests by ITF/IWTA member nations from this date until the conclusion of the 2012 Paralympic Tennis event to ensure certainty of preparation for all players aiming to qualify for the competition.

#### **D. AMENDMENTS**

The eligibility criteria for wheelchair tennis including the Quad Draw remain under review and may be subject to amendments from time to time. In the event that amendments are made to the eligibility criteria, then the players may be subject to re-classification and/or protest under the new eligibility criteria, notwithstanding any other provisions of this Appendix A.

#### **E. FIRST PROTEST**

The procedures set out in section III.C.2 above apply but with the following exceptions:

- References to 'quad players' and the 'Quad Draw' should refer to wheelchair tennis players in general and ITF sanctioned wheelchair tennis draws.
- As the procedure for general eligibility is self-certification, the first protest may or may not refer to a classified player and therefore references to the 'original classification' (iv) may or may not be appropriate.

#### **F. SECOND PROTEST**

The procedures set out in section III.C.3 above apply but with the following exception:

- References to 'quad players' and the 'Quad Draw' should refer to wheelchair tennis players in general and ITF sanctioned wheelchair tennis draws.

#### **IV. PHYSICAL DISABILITY/CHANGE OF CIRCUMSTANCES**

If a player is able to demonstrate, to the satisfaction of the Commission that there has been a change of circumstances, in relation to the wheelchair tennis player's physical disability then that player shall be entitled to submit a request to the Commission for reconsideration of his eligibility. Such request will be referred to ITF Wheelchair Tennis Manager. Any such request may, however, only be made after a minimum of 12 months has elapsed after the final decision on the wheelchair tennis player's eligibility (subject to Appendix A, section D). Any such request must be accompanied by relevant medical evidence and other information that the Commission may require in order to assess whether the wheelchair tennis player's eligibility should be reconsidered. If the Commission considers that the player's eligibility should be reconsidered, then the Commission shall consider the player's eligibility in accordance with the procedure set out in section IV.

#### **V. GENERAL**

Any deviation from any provision of these rules shall not invalidate any finding, procedure or decision unless that deviation raises a material doubt as to the reliability of the finding or decision.

**VI. MATTERS NOT PROVIDED FOR AND/OR UNFORESEEN CIRCUMSTANCES**

In respect of any matter not provided for in this Appendix A the Commission or other appropriate person or body shall deal with the matter and/or take such action or decision as is considered appropriate having regard to general principles of justice and fairness.

## APPENDIX B

### GLOSSARY OF TERMS

#### **Musculoskeletal Definitions**

Upper extremity refers to the arms, including the shoulder joint. Lower extremity refers to the legs, including the hip joint and gluteal muscles. Ankylosis of the joint is the immobility and consolidation of a joint due to disease, injury, or surgical procedure. Arthrosis of a joint is any abnormal physical change, with or without inflammation. The metatarsophalangeal joints are the joints at the junction of the foot and the toes. The metacarpophalangeal joints are the knuckles of the hands.

#### **Neurological Definitions**

The nervous system can be generally divided into the brain, spinal cord and peripheral nerves. The central nervous system refers to the brain and spinal cord, and a central injury refers to an injury to the central nervous system. When referring to the spinal cord, rostral means above, or closer to the brain.

The spine is divided into four segments. The cervical spine is an extension of the brainstem into the neck. The thoracic (dorsal) spine corresponds generally to the region from the neck to above the hipbones. The lumbar spine corresponds generally to the region of the lower back. The sacral spine is within the pelvis.

**i. Cervical Spine**

There are 8 cervical spinal levels, referred to as C1 through C8. A spinal cord injury above C5 may be associated with loss of function of all of the muscles of the upper extremities. A spinal cord injury at C8 results in loss of function of the hand muscles.

**ii. Thoracic Spine (also known as dorsal spine)**

There are 12 spinal levels, referred to as T1 through T12. Except for T1, which contributes to minor control of hand muscles, injury to the dorsal spine may result in loss of function to the lower extremities. With more rostral spine injuries, trunk control may become more affected. For example, T5 is at the level of the nipple, and T10 is at the level of the umbilicus.

**iii. Lumbar Spine**

There are 5 lumbar spinal segments, referred to as L1 through L5. With more rostral spine injuries (L1 through L3) weakness may result in all of the major lower extremity muscles. L5 injury may result in weakness of gluteal muscles and muscles that control ankle movement.

**iv. Sacral Spine**

There are 4 sacral spinal segments, referred to as S1 through S4. Only S1 contributes to motor function, the primary muscle being the gastrocnemius, or calf muscle, which allows the foot to push off when walking or running.

**Severe Arthrosis Definitions**

Severe arthrosis is defined radiographically, and must be characterised by: Degeneration of articular cartilage (radiographically apparent joint space narrowing), plus any 1 of the following 3:

- i.** Hypertrophy of bone at the margins (spurring)
- ii.** Bony sclerosis of the articular surface
- iii.** Subchondral cystic changes

**Phocomelia**

A developmental anomaly characterized by absence of the proximal portion of a limb. For example, the hand may be attached to the trunk of the body by a single bone.

**Myopathy**

A primary disease of the muscle.

**Muscular Dystrophy**

A genetic condition which leads to wasting and weakness within the muscle.

**Motor Function**

The innate capability of a muscle to perform a specified action irrespective of skill or practice

## APPENDIX C

### MEDICAL CONDITIONS RULE

#### Medical

##### a. Medical Condition

A medical condition is a medical illness or a musculoskeletal injury that warrants medical evaluation and/or medical treatment by the Physiotherapist/Athletic Trainer (also known as the Primary Health Care Provider) during the warm-up or the match.

- Treatable Medical Conditions
  - Acute medical condition: the sudden development of a medical illness or musculoskeletal injury during the warm-up or the match that requires immediate medical attention.
  - Non-acute medical condition: a medical illness or musculoskeletal injury that develops or is aggravated during the warm-up or the match and requires medical attention at the changeover or set break.
- Non-Treatable Medical Conditions
  - Any medical condition that cannot be treated appropriately, or that will not be improved by available medical treatment within the time allowed.
  - Any medical condition (inclusive of symptoms) that has not developed or has not been aggravated during the warm-up or the match.
  - General player fatigue.
  - Any medical condition requiring injections, intravenous infusions or oxygen, except for diabetes, for which prior medical certification has been obtained, and for which subcutaneous injections of insulin may be administered.

##### b. Medical Evaluation

During the warm-up or the match, the player may request through the Chair Umpire for the Physiotherapist/Athletic Trainer to evaluate him/her during the next change over or set break. Only in the case that a player develops an acute medical condition that necessitates an immediate stop in play may the player request through the Chair Umpire for the Physiotherapist/Athletic Trainer to evaluate him/her immediately.

The purpose of the medical evaluation is to determine if the player has developed a treatable medical condition and, if so, to determine when medical treatment is warranted. Such evaluation should be performed within a reasonable length of time, balancing player safety on the one hand, and continuous play on the other. At the discretion of the Physiotherapist/Athletic Trainer, such evaluation may be performed in conjunction with the Tournament Doctor, and may be performed off-court.\*

If the Physiotherapist/Athletic Trainer determines that the player has a non-treatable medical condition, then the player will be advised that no medical treatment will be allowed.

### **c. Medical Time-Out**

A Medical Time-Out is allowed by the ITF Supervisor/Referee or Chair Umpire when the Physiotherapist/Athletic Trainer has evaluated the player and has determined that additional time for medical treatment is required. The Medical Time-Out takes place during a change over or set break, unless the Physiotherapist/Athletic Trainer determines that the player has developed an acute medical condition that requires immediate medical treatment.

The Medical Time-Out begins when the Physiotherapist/Athletic Trainer is ready to start treatment. At the discretion of the Physiotherapist/Athletic Trainer, treatment during a Medical Time-Out may take place off-court, and may proceed in conjunction with the Tournament Doctor.\*

The Medical Time-Out is limited to three (3) minutes of treatment. However, the ITF Supervisor/Referee may extend the time allowed for treatment if necessary.

A player is allowed one (1) Medical Time-Out for each distinct treatable medical condition. All clinical manifestations of heat illness shall be considered as one (1) treatable medical condition. All treatable musculoskeletal injuries that manifest as part of a kinetic chain continuum shall be considered as one (1) treatable medical condition.

*Muscle Cramping:* A player may receive treatment for muscle cramping only during the time allotted for change of ends and/or set breaks. Players may not receive a Medical Time-Out for muscle cramping.

In cases where there is doubt about whether the player suffers from an acute medical condition, non-acute medical condition inclusive of muscle cramping, or non-treatable medical condition, the decision of the Physiotherapist/Athletic Trainer, in conjunction with the Tournament Doctor, if appropriate, is final. If the Physiotherapist/Athletic Trainer believes that the player has heat illness, and

if muscle cramping is one of the manifestations of heat illness, then the muscle cramping may only be treated as part of the recommended treatment by the Physiotherapist/Athletic Trainer for the heat illness condition.

Note:

A player who has stopped play by claiming an acute medical condition, but is determined by the Physiotherapist/Athletic Trainer and/or Tournament Doctor to have muscle cramping, shall be ordered by the Chair Umpire to resume play immediately.

If the player cannot continue playing due to severe muscle cramping, as determined by the Physiotherapist/Athletic Trainer and/or Tournament Doctor, he/she may forfeit the point(s)/game(s) needed to get to a change of end or set-break in order to receive immediate evaluation, and treatment if time allows. There may be a total of two (2) additional change of ends treatments for muscle cramping in a match, not necessarily consecutive.

If it is determined by the Chair Umpire or ITF Supervisor/Referee that gamesmanship was involved, then a Code Violation for Unsportsmanlike Conduct could be issued.

A total of two (2) consecutive Medical Time-Outs may be allowed by the ITF Supervisor/Referee or Chair Umpire for the special circumstance in which the Physiotherapist/Athletic Trainer determines that the player has developed at least two (2) distinct acute and treatable medical conditions. This may include: a medical illness in conjunction with a musculoskeletal injury; two or more acute and distinct musculoskeletal injuries. In such cases, the Physiotherapist/Athletic Trainer will perform a medical evaluation for the two or more treatable medical conditions during a single evaluation, and may then determine that two consecutive Medical Time-Outs are required.

#### **d. Medical Treatment**

A player may receive on-court medical treatment and/or supplies from the Physiotherapist/Athletic Trainer and/or Tournament Doctor during any changeover or set break. As a guideline, such medical treatment should be limited to two (2) changeovers/set breaks for each treatable medical condition, before or after a Medical Time-Out, and need not be consecutive. Players may not receive medical treatment for non-treatable medical conditions.

#### **e. Penalty**

After completion of a Medical Time-Out or medical treatment, any delay in resumption of play shall be penalized by Code Violations for Delay of Game. Any player abuse of this Medical Rule will be subject to penalty in accordance with the Unsportsmanlike Conduct section of the Code of Conduct.

#### **f. Bleeding**

If a player is bleeding, the Chair Umpire must stop play as soon as possible, and the Physiotherapist/Athletic Trainer must be called to the court by the Chair Umpire for evaluation and treatment. The Physiotherapist/Athletic Trainer, in conjunction with the Tournament Doctor if appropriate, will evaluate the source of the bleeding, and will request a Medical Time-Out for treatment if necessary.

If requested by the Physiotherapist/Athletic Trainer and/or Tournament Doctor, the ITF Supervisor/Referee or Chair Umpire may allow up to a total of five (5) minutes to assure control of the bleeding.

If blood has spilled onto the court or its immediate vicinity, play must not resume until the blood spill has been cleaned appropriately.

#### **g. Vomiting**

If a player is vomiting, the Chair Umpire must stop play if vomiting has spilled onto the court, or if the player requests medical evaluation. If the player requests medical evaluation, then the Physiotherapist/Athletic Trainer must determine if the player has a treatable medical condition, and if so, whether the medical condition is acute or non-acute.

If vomiting has spilled onto the court, play must not resume until the vomit spill has been cleaned appropriately.

#### **h. Physical Incapacity**

During a match, if there is an emergency medical condition and the player involved is unable to make a request for a Physiotherapist/Athletic Trainer, the Chair Umpire shall immediately call for the Physiotherapist/Athletic Trainer and Tournament Doctor to assist the player.

Either before or during a match, if a player is considered unable physically to compete, the Physiotherapist/Athletic Trainer and/or Tournament Doctor should inform the ITF Supervisor/Referee and recommend that the player is ruled unable to compete in the match to be played, or retired from the match in progress.

The ITF Supervisor/Referee shall use great discretion before taking this action and should base the decision on the best interests of professional tennis, as well as taking all medical advice and any other information into consideration.

The player may subsequently compete in another event at the same tournament if the Tournament Doctor determines that the player's condition has improved to

the extent that the player may safely physically perform at an appropriate level of play, whether the same day or on a later day.

\* It is recognized that national laws or governmental or other binding regulations imposed upon the event by authorities outside its control may require more compulsory participation by the Tournament Doctor in all decisions regarding diagnosis and treatment.

## APPENDIX D

### TOUR CLASSIFICATION

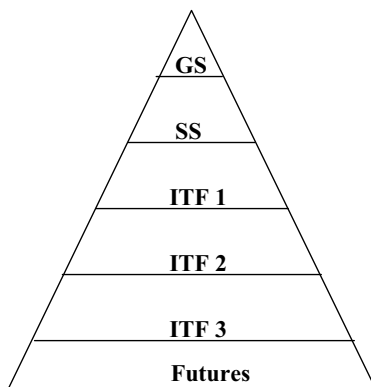
Tournament classifications on the Wheelchair Tennis Tour shall be determined by the ITF Wheelchair Tennis Committee. The following principles are used and are reviewed annually.

#### PRINCIPLES

**a. Pyramid System**

A pyramid system is used to try and maintain the categorisation of the Wheelchair Tennis Tour. The following categories will be used: Grand Slams, Super Series, ITF 1, ITF 2 and ITF 3 Series and ITF Futures Series.

There will be a few Grand Slam and Super Series events, more ITF 1 and ITF 2 and the number of tournaments will increase as you reach the ITF Futures Series level.



**b. Balance**

The ITF endeavours to create a balance of Grand Slams, Super Series and ITF/Futures Series between the Americas, Asia/Oceania, Europe/Africa.

**c. Classification Criteria**

- Organisation
- Venue
- Transport
- Accommodation

- Officiating
- Prize Money
- Promotion

Tournaments will only be up or down graded one (1) category per year.

**d. Other factors**

Other factors such as (wheelchair) tennis history, different world areas etc. will also be taken into account.

## APPENDIX E

### WELFARE POLICY

Any Player, coach, trainer, manager, agent, medical or para-medical personnel and/or family member, tournament guest, credentialed person or other similar associate of any player (together “Player Support Team Member”) shall conduct himself/herself in a professional manner at all times and in accordance with this ITF Welfare Policy.

#### a. Elements of the Welfare Policy

- i. Application
  - (a) Player Support Team Members shall be familiar with, and agree to abide by, the ITF Welfare Policy.
- ii. Unfair and/or Discriminatory Conduct
  - (a) Player Support Team Members shall not engage in unfair or unethical conduct including any attempt to injure, disable or intentionally interfere with the preparation or competition of any player.
  - (b) Player Support Team Members shall not discriminate in the provision of services on the basis of race, ethnicity, national origin, religion, age or sexual orientation.
- iii. Abuse of Authority; Abusive Conduct
  - (a) Player Support Team Members shall not abuse his or her position of authority or control, and shall not compromise the psychological, physical or emotional well being of any player.
  - (b) Player Support Team Members shall not engage in abusive conduct, either physical or verbal, or threatening conduct or language directed toward any player, tournament official, ITF staff member, on-court official, coach, parent, spectator or member of the press/media.
  - (c) Player Support Team Members shall not exploit any player relationship to further personal, political or business interests at the expense of the best interest of the player.
- iv. Sexual Conduct

In order to prevent sexual abuse and the negative consequences resulting from the imbalance of a dual relationship, sexual conduct of any kind between any player and his/her Player Support Team members is discouraged. In addition, the following conduct is specifically prohibited:

  - (a) Player Support Team Members shall not make sexual advances towards, or have any sexual contact with, any player who is (1)

under the age of 17, or (2) under the age of legal majority in the jurisdiction where the conduct takes place or where the player resides.

- (b) Player Support Team Members shall not sexually abuse a player of any age. Sexual abuse is defined as the forcing of sexual activity by one person on another person (i) of diminished mental capacity; or (ii) by the use of physical force, threats, coercion, intimidation or undue influence.
- (c) Player Support Team Members shall not engage in sexual harassment - for example, by making unwelcome advances, requests for sexual favours or other verbal or physical conduct of a sexual nature where such conduct may create an intimidating, hostile or offensive environment.
- (d) Player Support Team Members shall not share a hotel room with a player who is (1) under the age of 17, or (2) under the age of legal majority in the jurisdiction where the hotel is located or where the player resides, unless such Player Support Team Member is the player's parent or is related to the player and authorised in writing by the player's parent. Penalties will apply to any underage player who is found to have violated this Hotel Room Policy. These penalties can include: forfeiture of points from the tournament(s) where the violation occurred and/or monetary fines equal to the amount of the hotel room rates and/or forfeiture of hotel per diem rates as applicable, for the tournament(s) where the violation occurred. Such Penalty shall be in addition to any penalties that may be imposed on the Player support team member pursuant to sub-Section 3 below. \*

\* In exceptional circumstances the ITF will permit an adult to share with a junior wheelchair tennis player provided that a care plan is in place that identifies that the player requires assistance in the room, that parental consent is given and the adult has undertaken a criminal records/police check. For further information please contact the ITF Wheelchair Tennis Department.

- v. Criminal Conduct - Player Support Team Members shall comply with all relevant criminal laws. For greater certainty and without limiting the foregoing, this obligation is violated if Player Support Team Members has been convicted of or entered a plea of guilty or no contest to a criminal charge or indictment involving (a) an offence involving use, possession, distribution or intent to distribute illegal drugs or substances, (b) an offence involving sexual misconduct, harassment or abuse, or (c) an offence involving child abuse. Further, this obligation may be violated if Player Support Team Member has been convicted of or entered a plea of

guilty or no contest to an offence that is a violation of any law specifically designed to protect minors.

- vi. Anti-Doping Activity - Player Support Team Members shall not commit any offence under the terms of the ITF's Anti-Doping Programme or aid or abet in any way a player's offence under that Programme.
- vii. Conduct in General - Player Support Team Members shall not conduct himself or herself in a manner that will reflect unfavourably on the ITF, any tournament, event or circuit owned or sanctioned by the ITF (the "ITF Tournaments"), any player, official or the game of tennis.
- viii. Credentialed Persons – No person who has been given a credential by a Tournament, including members of the media, may at any time during the Tournament engage in abusive conduct directed towards any player, official, spectator, or Tournament or ITF staff.

**b. Violations/Procedures**

- i. Any individual who believes that any Player Support Team Member has failed to meet his or her obligations under this Welfare Policy may file a written complaint with the ITF Executive Director responsible for the ITF Tournament in which the complainant participates. That complaint shall be signed and shall state specifically the nature of the alleged misconduct. Upon receipt of such a signed complaint, the ITF Executive Director shall promptly initiate a review of the matter. The ITF Executive Director may also initiate an investigation on the basis of a suspension or other disciplinary action taken against Player Support Team Members by a national federation or other tennis organisation or a conviction or plea of guilty or no contest to a criminal charge or indictment as set out in Section v. above.
- ii. Upon review of the complaint and, where appropriate, additional investigation, the ITF Executive Director may determine that the complaint does not merit further action. If the ITF Executive Director determines that the complaint does merit further action, after giving the accused individual the opportunity to present his or her views to the ITF Executive Director or his/her designee, either in person or in writing, at the ITF Executive Director's discretion, the ITF Executive Director may impose appropriate sanctions including (a) denial of privileges or exclusion of the person in question from any or all ITF Tournaments, or (b) such other sanctions including monetary sanctions as the ITF Executive Director may deem appropriate. In addition, the ITF Executive Director shall have authority to issue a provisional suspension, pending

the completion of the investigation and issuance of a final decision on the matter.

- iii. Decisions of the ITF Executive Director may be appealed to the Committee responsible for the ITF Tournament in which the complainant participates, unless such decision involves the imposition of a suspension greater than one (1) year or a fine in excess of US\$5,000, in which case the appeal of such ITF Executive Director decision shall be made to the Board of Directors of the ITF. In either circumstance, the appellate body shall decide whether to review the appeal based solely on the ITF Executive Director's investigation or whether to hold a full hearing in which the accused Player Support Team Member will be given the opportunity to present his/her views directly to the appellate body, in which case the appellate body shall issue directions for the efficient conduct of the appeal.
- iv. Any decision of the Executive Director and/or the Committee pursuant to this Welfare Policy may be communicated to those Member National Associations and ITF Tournament organisers deemed necessary by the Executive Director and/or the Committee.

## APPENDIX F

### **Gender Verification**

In any competition, a player may be required upon request to submit to gender verification to determine sexual status.

In the event that the gender of a player is questioned, the medical delegate (or equivalent) of the ITF shall have the authority to take all appropriate measures for the determination of the gender of a competitor.

The results of any tests conducted will not be made public out of deference to the human rights of the individual concerned but will be reported to the Chairman of the ITF Sport Science and Medicine Commission who shall advise the Board of Directors of the gender of the player concerned.

Failure by a player to submit to testing upon the request of the ITF shall subject the player to immediate suspension from the competition until such time as the appropriate testing is carried out in accordance with these Regulations.

### **Transsexuals**

Any individuals undergoing sex reassignment from male to female before puberty are regarded as girls and women (female), while those undergoing reassignment from female to male are regarded as boys and men (male).

Individuals undergoing sex reassignment from male to female after puberty (and the converse) are eligible for participation in female or male competitions, respectively, under the following conditions:

a. Surgical anatomical changes have been completed, including external genitalia changes and gonadectomy.

b. Legal recognition of their assigned sex has been conferred by the appropriate official authorities.

c. Hormonal therapy appropriate for the assigned sex has been administered in a verifiable manner and for a sufficient length of time to minimise gender-related advantages in sport competitions.

d. Eligibility should begin no sooner than two years after gonadectomy.

In all instances, a confidential case-by-case evaluation will occur.

**APPENDIX G**  
**MANAGEMENT**

**Board of Directors**

**a) Management**

Wheelchair Tennis shall be managed by the Board of Directors of the ITF

**b) Duties**

The duties of the Board of Directors shall be:

- i. To approve and adopt the Rules and Regulations and Code of Conduct for the wheelchair tennis tour.
- ii. To decide any appeals or disputes
- iii. To register in the name of the ITF any trade marks in connection with wheelchair tennis and to protect such trade marks.
- iv. The Board of Directors shall appoint every two years a Wheelchair Tennis Committee, which shall consist of a Chairman, who shall be a member of the Board of Directors, and further members as deemed necessary.

**ITF Wheelchair Tennis Committee**

The duties and powers of the ITF Wheelchair Tennis Committee shall be:

- a. To manage the day-to-day administration of wheelchair tennis.
- b. To ensure uniform application of, and compliance with, the Rules, Regulations and Code of Conduct.
- c. To administer the funds of wheelchair tennis within the financial framework of the ITF.
- d. To report to the Board of Directors on all financial matters.
- e. To undertake other duties as laid down in this Rules and Regulations.
- f. To submit regular reports to the Board of Directors.
- g. To decide any appeals or disputes in whatever manner they deem to be appropriate and whose decision shall be final and binding on all parties.

**Members**

Chairman	Mr Chris Kypriotis BRA
Committee Member	Mr Miguel Diaz ESP
Committee Member	Mr Stig Ericson SWE
Committee Member	Mr Christo Kok NED
Committee Member	Mr Martin McElhatton GBR
Committee Member	Mr Randy Stephens USA

## **APPENDIX H**

### **ITF WHEELCHAIR TENNIS DEPARTMENT**

Wheelchair Tennis Manager	Mr Mark Bullock
Wheelchair Tennis Officer	Ms Ellen De Lange
NEC Tour Coordinator	Ms Victoria Thorpe
Wheelchair Tennis Assistant	Mr James Hamill-Reeves
Wheelchair Development Assistant	Mr Daniel Absolon

For an updated list of the addresses of the member nations of the ITF please visit the  
ITF Tennis Website at

<http://www.itftennis.com/abouttheitf/nationalassociations/>

## **APPENDIX I**

### **IWTA**

#### **IWTA MANAGEMENT COMMITTEE**

President	Mr Martin McElhatton GBR
Vice President	Ms Janet Petras CAN
Committee Member	Mr Fahir Altan TUR
Committee Member	Mr Greg Crump AUS
Committee Member	Mr Kevin Smith RSA
Committee Member	Mr Jose Maria Valladares ARG
Committee Member	Mr Kobi Wiener ISR
Committee Member	Mr Jeremiah Yolcut USA

#### **HONORARY LIFE IWTA PRESIDENT**

Brad Parks USA

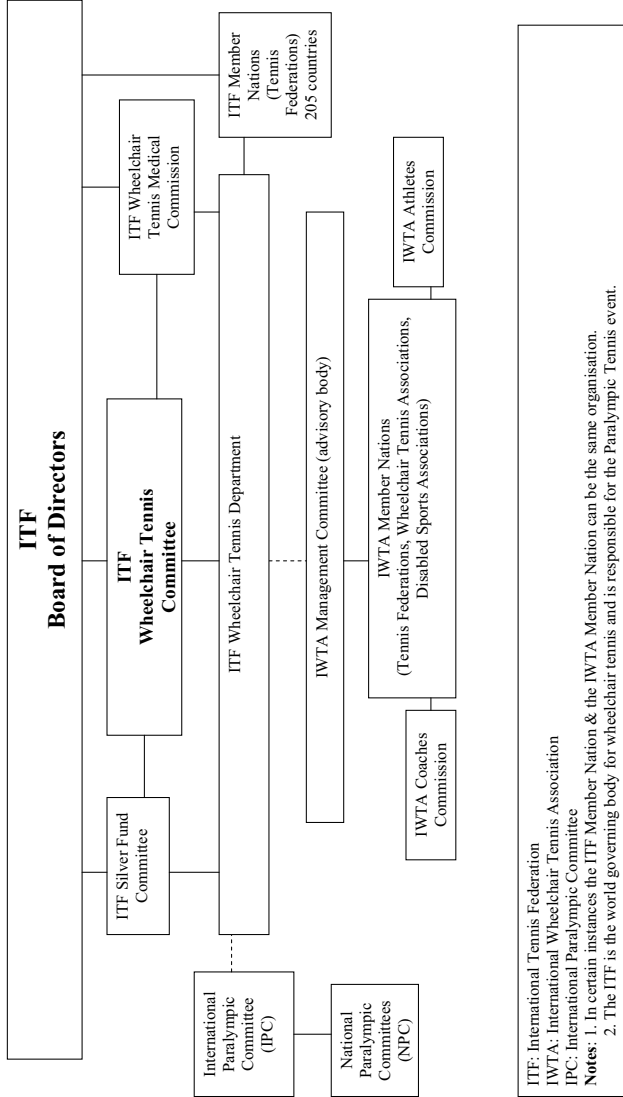
#### **IWTA MEMBER NATIONS**

For an updated list of the addresses of the member nations of the IWTA please visit the  
ITF Wheelchair Tennis Website at

<http://www.itftennis.com/wheelchair/generalinfo/membernationalations.asp>

## APPENDIX J

### STRUCTURE OF THE ITF AND IWTA



**Notes:**

© ITF Limited t/a International Tennis Federation  
All rights reserved  
2010



***Sports, fun and  
healthy for  
everybody!***

**ITF AND THE JOHAN  
CRUYFF FOUNDATION**

The Cruyff Foundation is partner of the ITF Junior Wheelchair Tennis Programme and Wheelchair Tennis Silver Fund. Both programmes fit the philosophy and activities of the Cruyff Foundation. The Silver Fund programme offers chances to disabled youth in less developed countries. Therefore the Cruyff Foundation started to support this ITF programme in 2003 and has been assisting it since then.

**If you have the opportunity to do something  
for another, then you should do it**

The Johan Cruyff Foundation supports sports programmes for children worldwide. Special attention is being paid to children with a handicap.

SUPPORT THE FOUNDATION, GO TO [WWW.CRUYFF-FOUNDATION.ORG](http://WWW.CRUYFF-FOUNDATION.ORG)





# OFFICIAL SPONSOR OF WORLDWIDE TENNIS



**BNP PARIBAS** | The bank for a changing world

[bnpparibas.com](http://bnpparibas.com)

**WE ARE TENNIS.** BNP Paribas is a worldwide leader in Retail Banking, Corporate & Investment Banking, and Investment Solutions. The group has four domestic retail banking markets in France, Italy, Belgium and Luxembourg. BNP Paribas supports the major tennis competitions including Roland Garros, the Davis Cup by BNP Paribas, the Fed Cup by BNP Paribas, the BNP Paribas Masters in Paris, the Internazionali BNL d'Italia in Rome, the Monte Carlo Rolex Masters and the BNP Paribas Open in Indian Wells. Through its support of several national tennis associations, 2000 clubs, 550 amateur tournaments, educational and social programmes around the world, BNP Paribas is actively involved in the promotion of tennis and in encouraging people from all walks of life to take part in the sport.

**WE ARE  
TENNIS  
COM**



© 2010 Invacare® International. All rights reserved. Photo credit: Invacare® International / Benoit Matha Carpenter.

**Robin Ammerlaan**

*Dutch wheelchair tennis player, Member of Team Invacare.  
Robin plays tennis with the Invacare® Top End® T-5 Tennis chair.*

Just as the name implies, Top End is all about being the very best, giving our athletes and users a winning performance every time. Whether it's our high-performance, rigid, everyday chairs, or our sports products for racing, basketball, tennis or hand-cycling we set our sights high – right at the very Top End, in fact. We have been making sports and recreation products since 1986. All of our chairs are custom built to your exact specifications concerning fit, function and performance. We positively welcome your requests – so tell us your needs and we'll develop a technology that wins for you!

*Technology that wins*

Invacare - Title sponsor of the Invacare  
Wheelchair Tennis Doubles Masters  
Official sponsor of the World Team Cup and  
the NEC Wheelchair Tennis Masters



**Yes, you can.®**

[www.topendwheelchair.com](http://www.topendwheelchair.com) - [www.invacare.eu.com](http://www.invacare.eu.com)

## ITF Wheelchair Tennis Partners

# NEC



**BNP PARIBAS**  
The bank for a changing world



## ITF Wheelchair Tennis Junior Programme Partner



Published by the International Tennis Federation  
ITF Ltd Bank Lane Roehampton London SW15 5XZ UK  
Tel: +44 (0)20 8878 6464  
Fax: +44 (0)20 8392 4741  
Email: [wheelchairtennis@itftennis.com](mailto:wheelchairtennis@itftennis.com)  
[www.itftennis.com/wheelchair](http://www.itftennis.com/wheelchair)  
Registered address: PO Box N-272 Nassau Bahamas

